

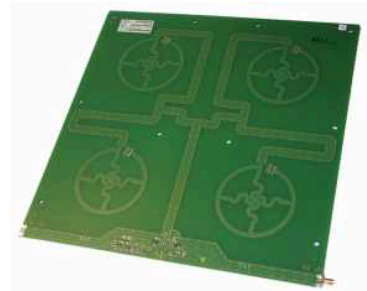
Smart Shelf RFID UHF Antenna module

SMSH-30-30-ETSI-FCC

Order-No. 52010219

Technical features:

- Antenna module for assembly integration
- for applications in radiated near-field
- extremely thin design
- read range: up to 1 m
- very homogeneous reading field
- extremely high front-to-back ratio
- suitable for static tag identifications



Order-No.		52010219
Frequency range	MHz	865-928
Polarization		circular
Antenna gain	dBiC	typ. -7
Axial ratio	dB	typ. 1.5
VSWR		typ. 1.25:1
Impedance	Ω	50
Front-to-back ratio	dB	> 20
max. input power (ETSI EN 302 208)	dBm	+33
max. input power (FCC 15.247)	dBm	+30 (at antenna port)
Far field half-power beam width	$^{\circ}$	60 / 60
Connection		SMA female
Operating temperature range	$^{\circ}\text{C}$	-20 to +55
Storage temperature range	$^{\circ}\text{C}$	-40 to +85
Degree of protection		indoor use only
Weight	kg	0.5
Dimensions (L x W x H)	mm	310 x 300 x 8.6
Packing size (L x W x H)	mm	approx. 330 x 310 x 25

Material:

- fibreglass-epoxy resin

Mounting options:

- 10 through-holes \varnothing 4.5 mm for M4 screws to mount on wall/ceiling

Accessories (optional):

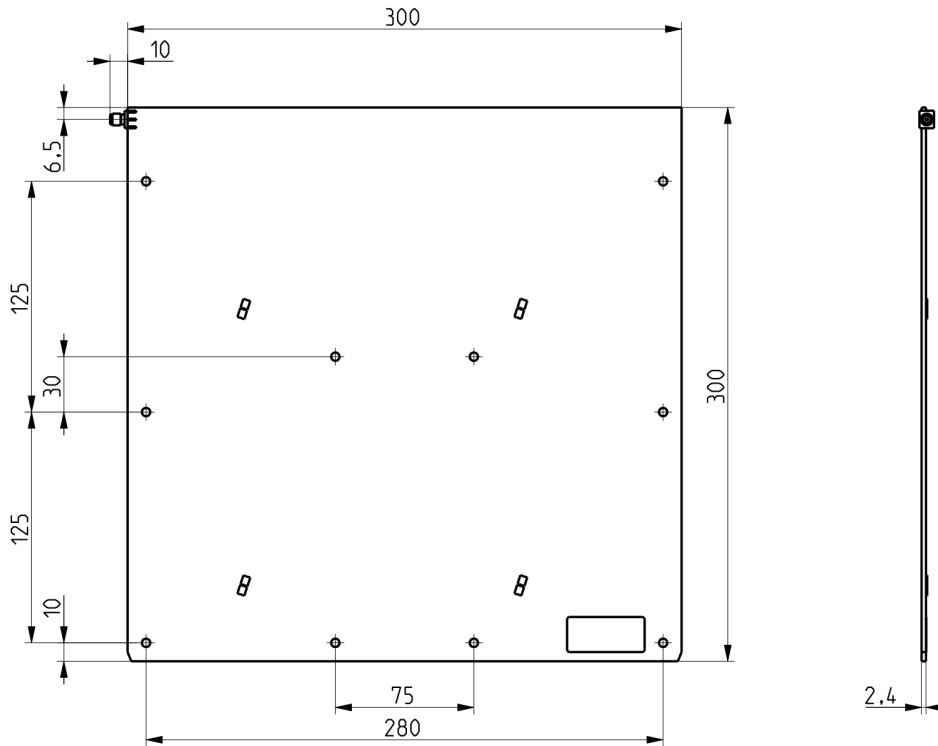
- mechanical protective housing SMSH-30-30-Housing for the upper side (Order-No. 52010224) to retrofit



Smart Shelf RFID UHF Antenna module SMSH-30-30-ETSI-FCC Order-No. 52010219

KATHREIN
RFID

Dimensions in [mm]:



Description:

The SMSH-30-30-ETSI-FCC antenna module was developed for applications in the field of point of sale, smart shelf applications and Kanban solutions. The antenna is characterized by an extremely homogeneous read zone, which is emitted by the high front to back ratio. Therefore it is suitable for static detection of multiple transponders.

Due to their extremely thin design, the antenna module can be integrated universal into different applications.

Example applications:

- Point-of-sales applications
- Smart shelves applications
- Kanban applications
- Conveyor belt applications



 **atlasRFIDstore.com**

1.888.238.1155 • Inside USA

1.205.383.2244 • Outside USA

info@atlasRFIDstore.com • www.atlasRFIDstore.com