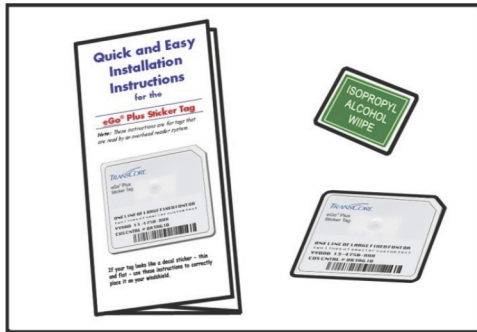


## READ THIS FIRST!

- ◆ If you have a metallized windshield, contact the customer service center.
- ◆ You **MUST** correctly and permanently install the tag on the windshield before driving to the toll plaza. Do not attach the tag to your visor or other temporary location.
- ◆ Do not wave the tag or hold it inside or outside your vehicle as you approach the toll plaza.
- ◆ Install the tag when the windshield's temperature is **above 50°F (10°C)**. In colder climates, use your heater/defroster to warm the windshield before installing the tag. Also, wipe the windshield dry before installing the tag.

➡ Here's what you need...



Just follow the 4 easy steps in this brochure.

## 1 Choose Location from Illustrations Below

## 2 Clean Area Using Alcohol Wipe

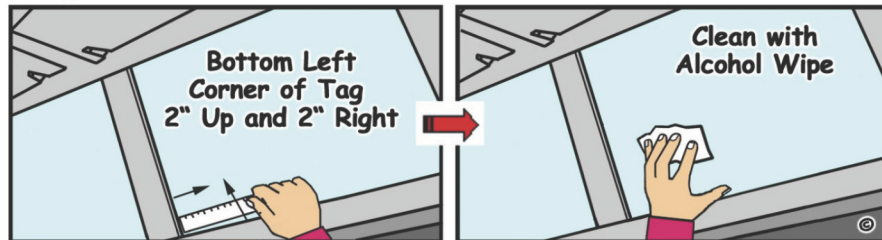
### Mirror Mounted to Header



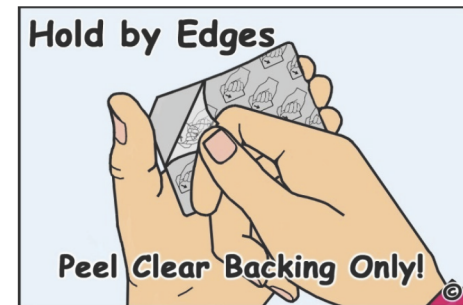
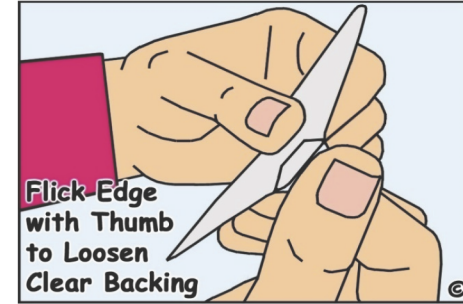
### Mirror Mounted to Windshield



### Large Truck, No Rearview Mirror



## 3 Peel Off Clear Backing



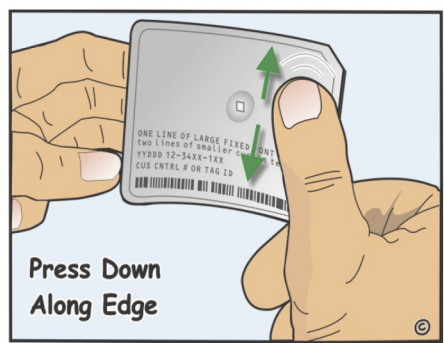
Use This Ruler

**Remember, you need to remove all of the air bubbles from under this tag or the tag may not work as designed.**

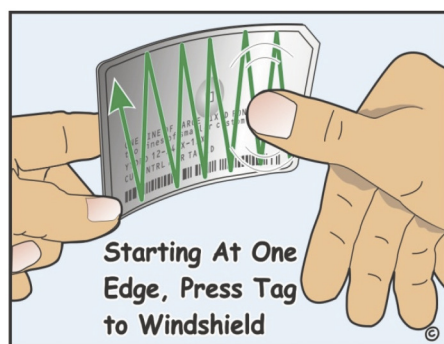
CONTINUED ON OTHER SIDE ➡

## 4 Apply

Make sure you have the tag in the right location (see Step 1) before touching it to the glass. Hold the tag away from the glass with one hand and press one edge to the glass.



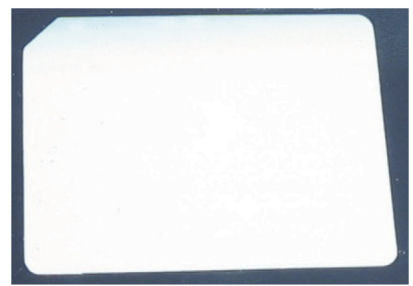
Stick the tag to the glass by rubbing your thumb up and down in a zigzag motion across entire tag surface. Be sure to rub over the tag's chip to remove as much air as possible.



Push out trapped air by rubbing on tag as shown in Step 4, Apply.

Step outside your vehicle and look at the tag through the windshield.

Here's a correctly installed tag when viewed through windshield.



Here's the same tag viewed from inside vehicle.



**You're Done!**  
You're ready to use your tag on the toll road. Remember to buckle up and obey the posted tollway speed limit.

**Removing Your Tag**  
If you want to remove the tag from your windshield, peel off the tag starting at the cut corner, then clean any adhesive residue remaining on the windshield using isopropyl alcohol. Once you remove your tag, you cannot reuse it.



# Quick and Easy Installation Instructions for the

## eGo® Plus Mini-Mini Sticker Tag

Note: These instructions are for tags that are read by an overhead reader system.



**FOLLOW INSTRUCTIONS AND REMOVE ALL OF THE AIR FROM UNDER THIS TAG**

**READ ALL OF THESE INSTRUCTIONS BEFORE INSTALLING THIS TAG**

atlasRFIDstore.com  
1.888.238.1155 • Inside USA  
1.205.383.2244 • Outside USA  
info@atlasRFIDstore.com • www.atlasRFIDstore.com

© 2006 TC License, Ltd. All rights reserved. TRANSSCORE and EGO are registered trademarks of TC License, Ltd. All other trademarks listed are the property of their respective owners. Contents are subject to change. Printed in the U.S.A.