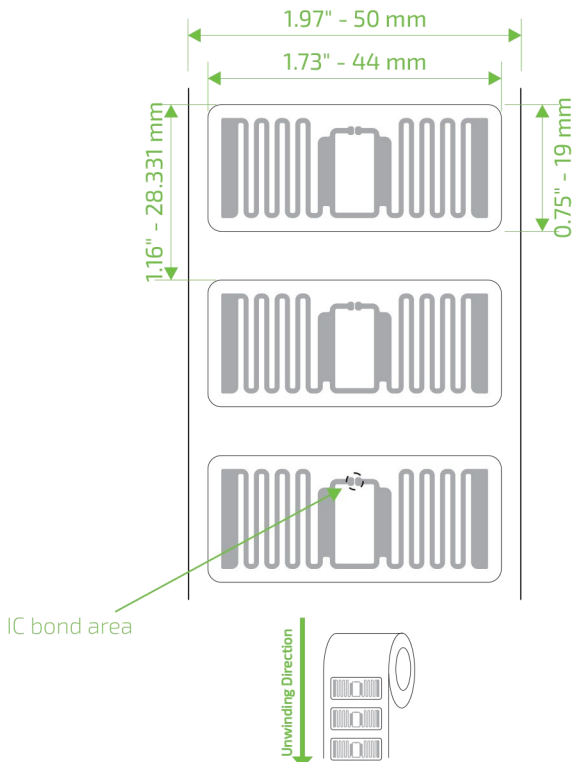


UHF RFID

CCRR A61F 44x19 WET INLAY



IC bond area

Description:

This is a compact, versatile and high-performance inlay. Designed for diverse applications.

Market Applications:

- Apparel
- Asset Management
- Supply chain, inventory and logistics

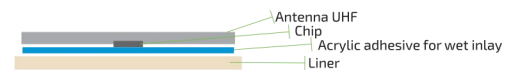
Key Benefits:

- Fast reading
- Quickness of counting
- Traceability

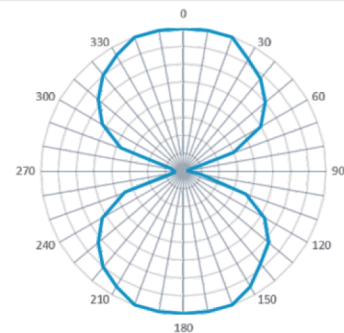
TECHNICAL SPECIFICATION				
Name	CCRR A61F 44x19 WET INLAY			
SKU	R6	AN741N102		
	R6-P	AN741N101		
Size	Die-Cut	Antenna		
	44x19 mm*	40x15 mm		
Web	52.00 mm* - 2.05"			
Pitch	28.331 mm* - 1.16"			
Gap	9.331 mm* - 0.38"			
Op. Frequency	860-960 MHz			
Standards	RAIN RFID ISO 18000-63 and EPC Global Gen2v2			
Integrated Circuit	Impinj Monza R6 or R6-P			
Memory	R6	TID	User	EPC
	R6-P	96 bits (48 uniques)	none 32/64 bits	96 bits 128/96 bits
Front Material	Aluminium with PET material			
Back Material	Liner with lamination permanent acrylic adhesive ADC200F			
Core size	76.2 mm - 3"			
Reel Diameter	203.2 mm - 8"			
Qty per reel	10,000 good units (yield > 99%)			
Void mark	Circle mark in the chip position			
ESD	2,000 V HBM (Human Body Model)			
Net Weight	3.5 kg - 7.71 lbs (Standard roll)			
Storage	23°C ±3°C / 50% RH ± 5%			
Op. Temperature	-40°C to 85°C			

* The dimension can vary up to ± 2 mm (0.07")

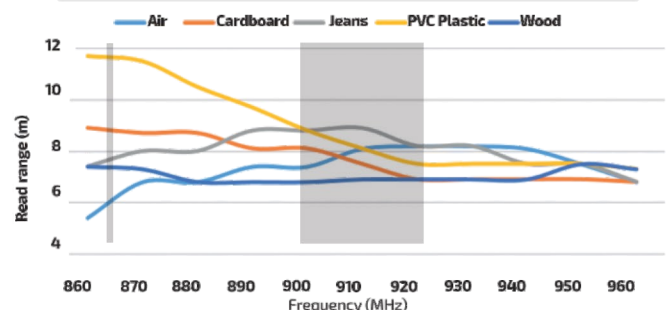
Structure



Angular Sensitivity



Read range



All graphs are generated in laboratory. Real-life performance may vary. Reader power: 29 dBm. Antenna sensitivity: -70 dBm.