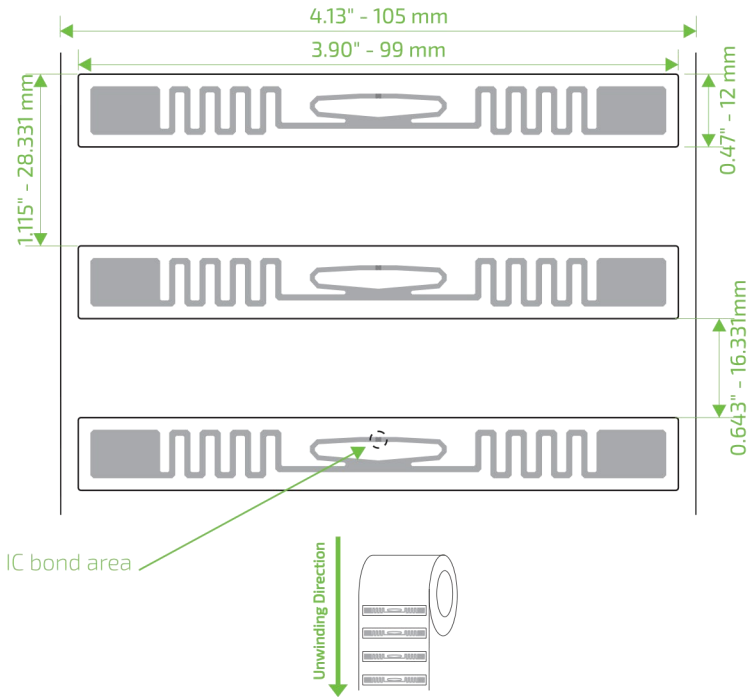


UHF RFID

CCRR 99x12 E61 WET INLAY



IC bond area

Description:

This is a special product for supply chain management of boxes and pallets. This inlay speed up the warehouse receiving, checking and dispatch.

Market Applications:

- Logistics & Supply chain
- Boxes and pallets
- Asset management

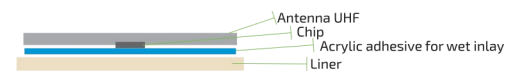
Key Benefits:

- Quickness of handling
- Inventory accuracy
- Stock visibility
- Fast reading

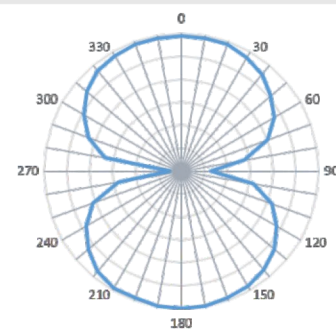
TECHNICAL SPECIFICATION				
Name	CCRR 99x12 E61 WET INLAY			
SKU	R6	AN7102N101		
	R6-P	AN7102N100		
Size	Die-cut	Antenna		
	99x12 mm*	95x08 mm		
Web	105.00 mm* - 4.13"			
Pitch	28.331 mm* - 1.16"			
Gap	16.331 mm* - 0.64"			
Op. Frequency	860-960 MHz			
Standards	RAIN RFID ISO 18000-63 and EPC Global Gen2v2			
Integrated Circuit	Impinj Monza R6 or R6-P			
Memory	R6	TID	User	EPC
	R6-P	96 bits (48 uniques)	none 32/64 bits	96 bits 128/96 bits
Front Material	Aluminium with PET material			
Back Material	Liner with lamination permanent acrylic adhesive ADC200F			
Core size	76.2 mm - 3"			
Reel Diameter	203.2 mm - 8"			
Qty per reel	10,000 good units (yield > 99%)			
Void mark	Circle mark in the chip position			
ESD	2,000 V HBM (Human Body Model)			
Net Weight	3.2 kg - 7.05 lbs (Standard roll)			
Storage	23°C ±3°C / 50% RH ± 5%			
Op. Temperature	-40°C to 85°C			

* The dimension can vary up to ± 2 mm (0.07")

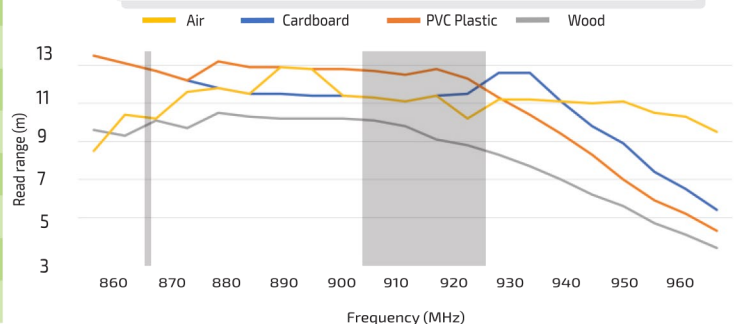
Structure



Angular Sensitivity



Read range



All graphs are generated in laboratory. Real-life performance may vary. Reader power: 29 dBm. Antenna sensitivity: -70 dBm.