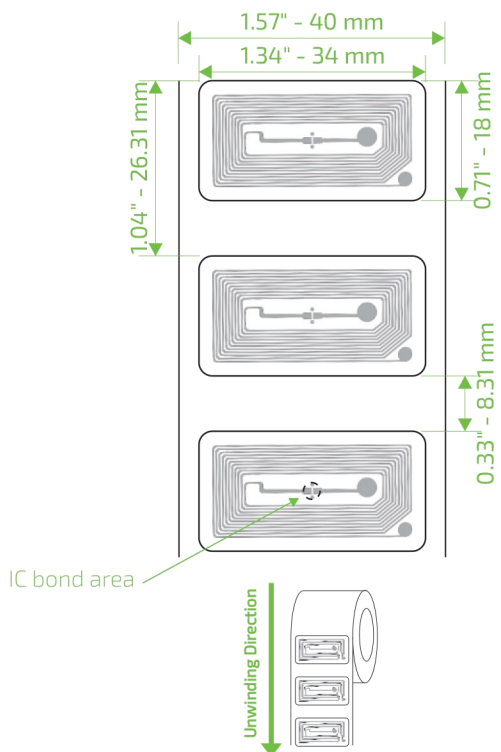


NFC

# CCRR P7A 34x18 WET INLAY



## Description:

This label is ideal for the event industry. It allows access control and payment methods. The NFC functionality enables the reading and writing from mobile phones and similar devices.

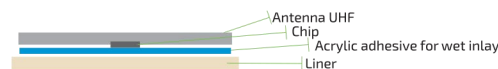
## Market Applications:

- Retail
- Social Media
- Games & Toys
- Location
- Media & Ads
- Loyalty Apps
- Electronics Pairing
- Ticketing & Monetary Transactions
- Leisure & Entertainment

## Key Benefits:

- Data security
- Cryptography
- Uniqueness
- Greater data capacity

## Structure



| TECHNICAL SPECIFICATION   |  |  |                          |
|---------------------------|--|--|--------------------------|
| <b>Name</b>               | CCRR P7A 34x18 WET INLAY                                 |  |                          |
| <b>SKU</b>                | AN731N102  |  |                          |
| <b>Size</b>               | Die-Cut<br>34x18 mm*                                     | Antenna<br>30x14 mm                          |                          |
| <b>Web</b>                | 40.00 mm* - 1.57"  |  |                          |
| <b>Pitch</b>              | 26.31 mm* - 1.04"  |  |                          |
| <b>Gap</b>                | 8.31 mm* - 0.33"   |  |                          |
| <b>Op. Frequency</b>      | 13.56 MHz  |  |                          |
| <b>Standards</b>          | NPC Forum Type 2, ISO/IEC 14443-A                        |  |                          |
| <b>Integrated Circuit</b> | NXP NTAG213  |  |                          |
| <b>Memory</b>             | UID<br>7 bytes identifier                                | Memory Access Protection<br>32 bits password | User Memory<br>144 bytes |
| <b>Front Material</b>     | Aluminium with PET material                              |  |                          |
| <b>Back Material</b>      | Liner with lamination permanent acrylic adhesive ADC200F |  |                          |
| <b>Core size</b>          | 76.2 mm - 3"   |  |                          |
| <b>Reel Diameter</b>      | 203.2 mm - 8"  |  |                          |
| <b>Qty per reel</b>       | 7,500 good units (yield > 99%)                           |  |                          |
| <b>Void mark</b>          | Circle mark in the chip position                         |  |                          |
| <b>ESD</b>                | 2,000 V HBM (Human Body Model)                           |  |                          |
| <b>Net Weight</b>         | 1.5 kg - 3.31 lbs (Standard roll)                        |  |                          |
| <b>Storage</b>            | 23°C ±3°C / 50% RH ± 5%                                  |  |                          |
| <b>Op. Temperature</b>    | -20°C to 85°C  |  |                          |

\* The dimension can vary up to ± 2 mm (0.07")