

PRODUCT DATASHEET

Confidex Crosswave Classic™



Dual-dipole label for logistics applications having good reading performance and radiation pattern.

ELECTRICAL SPECIFICATION

Device type

UHF RFID / EPCglobal Gen2v2

Operational frequency

Global 860-960MHz

IC type

Impinj Monza 4QT™

Memory configuration

EPC 128 bit; TID 96 bit; User 512 bit

Read range (2W ERP)*

ETSI on plastic up to 10 m / 33 ft ETSI
on cardboard up to 10 m / 33 ft FCC on
plastic up to 10 m / 33 ft FCC on
cardboard up to 9 m / 30 ft

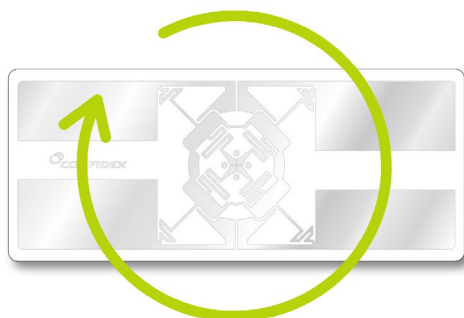
Applicable surface materials*

Non-metallic surfaces

* Read ranges are theoretical values that are calculated for non-reflective environment, in where antennas with optimum directivity are used with maximum allowed operating power according to ETSI EN 302 208 (2W ERP). ETSI = 865 - 868 MHz, FCC = 902 - 928 MHz. Different surface materials may have an effect on performance.

360° Readability

Confidex Crosswave Classic™ is designed to have constant reading performance in all orientations even when using linear reader antenna.



MECHANICAL SPECIFICATION

Tag materials

Matte coated paper face material

Background adhesive

General purpose permanent adhesive

Delivery format

500 pcs on reel

Pitch on reel

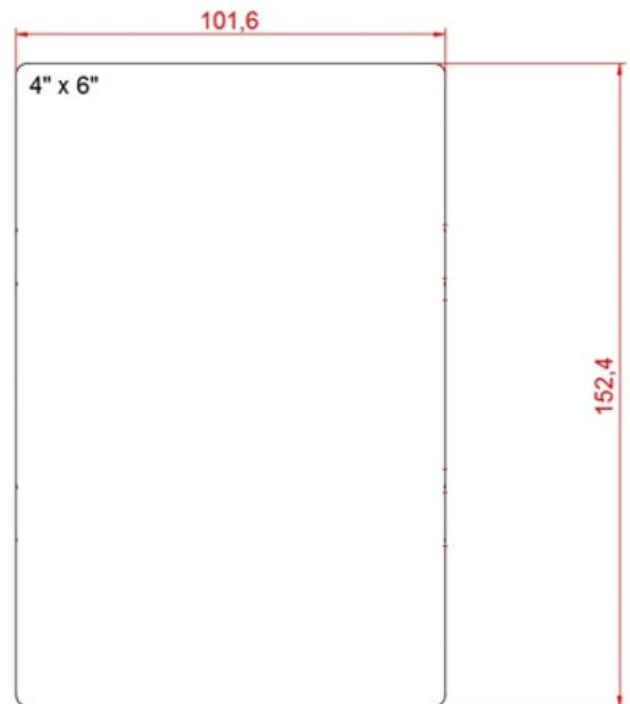
155,6mm / 6.126"

Reel core inner diameter

76 mm / 3"

Tag dimensions

101,6 x 152,4 x 0,2mm / 4 x 6 x 0.008"



ENVIRONMENTAL RESISTANCE

Operating temperature

-35°C to +70°C / -31°F to +158°F

Ambient temperature

-35°C to +70°C / -31°F to +158°F

Storage condition

1 year in +20°C / 50% RH (shelf life for adhesive)

Expected lifetime

Meant for short term use, in normal operating conditions
lifetime can be years

Values in the table are the best recommendations; resistance against environmental conditions depends on the combination of all influencing factors, exposure duration and chemical concentrations. Thus, product's final suitability for certain environmental conditions is recommended to be tested. Contact Confidex for more specific information.

PERSONALIZATION

Pre-encoding

- Customer-specific encoding of EPC or user memory. Locking permanently or with password.

Customized printing

- Customer-specific layout including logo, text, numbers, barcodes etc.

INSTALLATION INSTRUCTIONS

Ideal installation conditions are +20°C (+68°F) / 50% RH. For exceptional conditions, please contact Confidex. Adhesive of the Confidex Crosswave Classic™ labels will provide best adhesion in 24 hours after the installation. Bond strength can be improved with firm application pressure. Always clean and dry the surface for obtaining the maximum bond strength. Avoid touching the background adhesive.

Confidex Crosswave Classic™ label antenna parts should not be in contact with metal to enable best performance of the label.

Minimum bending diameter of the label is defined to be 50mm. Do not bend the label above the limit. Never touch on the IC location. IC is a sensitive electrical component and can be damaged if unexpected pressure is applied on it.

ORDER INFORMATION

Product number: 4000041

Product name: Confidex Crosswave Classic™ 4x6" M4QT

For additional IC versions, information and technical support contact Confidex Ltd.

DISCLAIMER

THE MATERIALS, PRODUCTS AND SERVICES ARE SOLD SUBJECT TO ITS STANDARD CONDITIONS OF SALE, WHICH ARE INCLUDED IN THE APPLICABLE DISTRIBUTOR OR OTHER SALES AGREEMENT. ALTHOUGH ANY INFORMATION, RECOMMENDATIONS, OR ADVICE CONTAINED HEREIN IS GIVEN IN GOOD FAITH, CONFIDEX MAKES NO WARRANTY OR GUARANTEE, EXPRESS OR IMPLIED, (i) THAT THE RESULTS DESCRIBED HEREIN WILL BE OBTAINED UNDER END-USE CONDITIONS, OR (ii) AS TO THE EFFECTIVENESS OR SAFETY OF ANY DESIGN INCORPORATING ITS PRODUCTS, MATERIALS, SERVICES, RECOMMENDATIONS OR ADVICE. EXCEPT AS PROVIDED IN CONFIDEX STANDARD CONDITIONS OF SALE, CONFIDEX AND ITS REPRESENTATIVES SHALL IN NO EVENT BE RESPONSIBLE FOR ANY LOSS RESULTING FROM ANY USE OF ITS MATERIALS, PRODUCTS OR SERVICES DESCRIBED HEREIN.

Each user bears full responsibility for making its own determination as to the suitability of Confidex products, materials, services, recommendations, or advice for its own particular use. Each user must identify and perform all tests and analyses necessary to assure that its finished systems incorporating Confidex products, materials, or services will be safe and suitable for use under end-use conditions. Nothing in this or any other document, nor any oral recommendation or advice, shall be deemed to alter, vary, supersede, or waive any provision of this Disclaimer, unless any such modification is specifically agreed to in a writing signed by Confidex.