

**Software****myAXXESS Manager**

- Management of doors and barriers in one project
- Easy assigning and managing of access rights
- Secure access control based on secure transponder technologies like Mifare DESFire and UCODE DNA
- Desktop readers for personalization of transponders available (ID MRU102, ID CPR30pro)
- Supports programming of ID MAX50.10, ID MAX.U1002 and MAX.U500i
- Reading of event- and log data from access control readers

**PART OF****MAKE ACCESS CONTROL EASY**

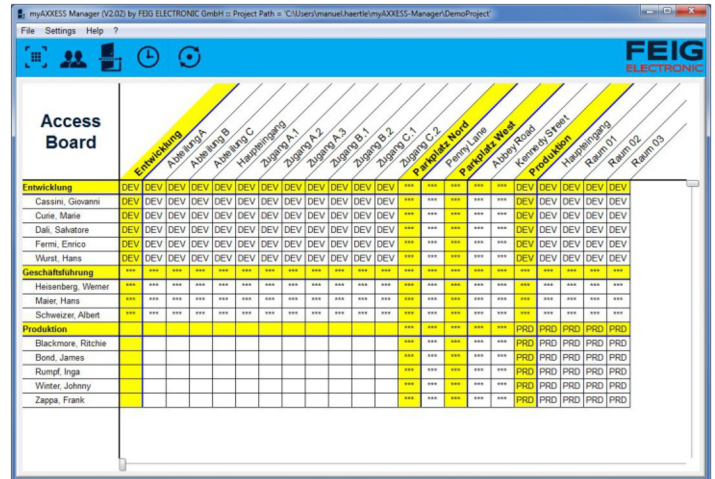
Access control systems on buildings and parking areas should be as uncomplicated as possible. myAXXESS is the secure, powerful and economic solution for small and medium-sized projects. Both in a stand-alone systems and integrated into existing access solutions.

As a RFID specialist, FEIG ELECTRONIC offers systems from a single source, consisting of:

- RFID hardware for short-range solutions (HF)
- RFID hardware for long-range solutions (UHF)
- Software myAXXESS Manager for administration of access authorizations
- Transponders for granting authorizations (HF chipcards and UHF wind shield transponders)

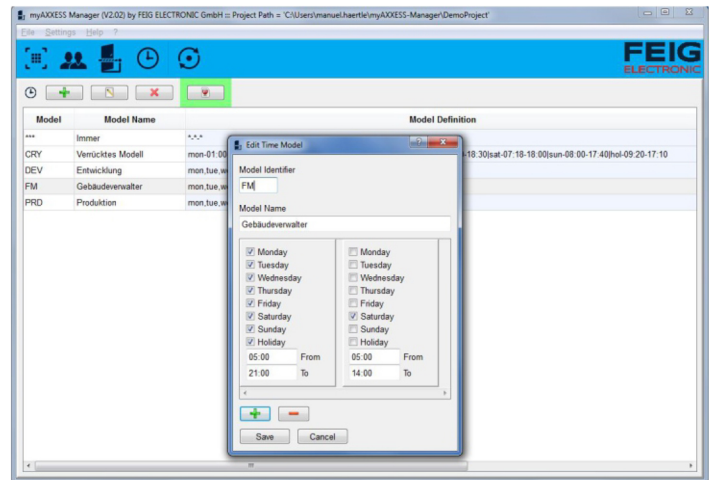
**Easy system management**

The "myAXCESS Manager" software makes it easy to manage access authorizations of people and vehicles. The local database application can control users and groups of users, and accesses for doors and barriers can be co-managed in one project and assigned to specific areas for ease of control.



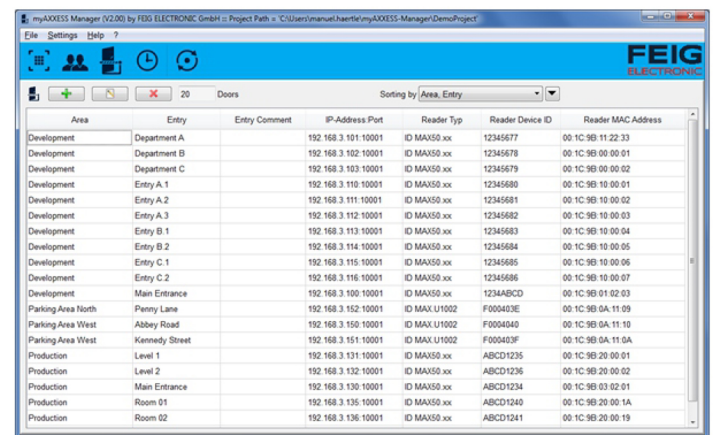
**High security level**

The software supports the programming of short-range readers such as the ID MAX50.10 for the identification of persons at doors and barriers as well as the programming of long-range readers such as ID MAX.U1002 and MAX.U500i for vehicle access control. If required, secure access projects can be implemented based on secure technologies such as Mifare DESFire and UCODE DNA from NXP.



**Windows based software**

myAXCESS Manager is a Windows based software and supports the common versions Windows 10 and Windows 11.



Stand of informationen: February 2024.

The information in this document is subject to change without notice and shall not be construed as a commitment. All brand names, trademarks or logos are property of their respective owners.



## Easy Access Right Management

Local data base application for management of access to doors and barriers, users, access rights, time models and holidays.

### Administration & Management of the Project

#### User Management



- Management of users and transponders
- Assignment of users to user groups
- Import of user lists and old projects
- Export of user lists

#### Access Right Management



- Managing access rights on single user and single door/barrier level or on user group and area level
- Easy managing of access rights with one general map

#### Door / Barrier Management



- Management of doors / barriers and readers
- Easy reader configuration
- Assignment of doors or barriers to areas
- Event list viewer

#### Time Model Management



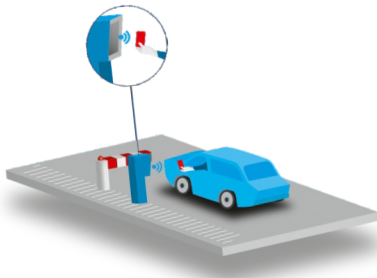
Creating own time models from 15 different, self-defined time periods

#### Holiday Management



- List of self-defined holidays
- Special access rights for holidays

### Reader Support



#### Short Range

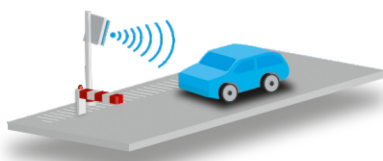
For short range identification of persons (access to doors or barriers), the ID MAX50.10 is supported. As transponders usually chip cards and key fobs are used. As a desktop reader the ID CPR30pro is supported.



ID MAX50.10



ID CPR30pro



#### Long Range

For identification of vehicles via several meters e.g. for access to a company site, ID MAX.U1002 and MAX.U500i are supported. As transponders usually windshield transponders such as the ID CTF-U are used.



ID MAX.U1002



MAX.U500i

Stand of information: February 2024.

The information in this document is subject to change without notice and shall not be construed as a commitment. All brand names, trademarks or logos are property of their respective owners.