

EXO Tag

Robust, all-purpose RAIN® UHF tags mount to any surface material and deliver long read ranges



HID's EXO Tag transponders are the most advanced general-purpose RAIN® RFID UHF tags available. Choose from options that mount on any material while enabling read ranges of up to 127.9 ft (39 m).

EXO Tag devices improve data collection speed and accuracy for logistics applications, while making tracking more cost-effective. These tags make it possible for example, to identify individual containers on pallets using RFID readers, as truckloads of them pass through designated points of distribution and delivery.

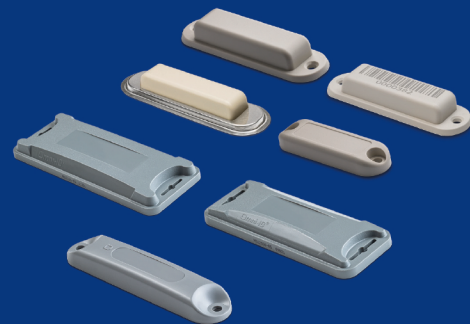
RAIN® RFID technology enables anti-collision functionality, fast data-rate communication and password data protection for precise, reliable reading and updating. All EXO Tag transponders are compliant with EPC global-certified UHF Class 1 Gen 2 readers and modules, including broadband capability for international operations.

The tough and versatile EXO Tag transponders are available for mounting on metal, plastic or wood using standard M5 screws, rivets, industrial adhesives or welding. The tags are lightweight, waterproof and resist high-pressure/high temperature washing conditions.

EXO RFID tags include HID Global's patented 3D antenna, enabling omnidirectional read range performance independent of mounting material.

With the smallest footprint, the Mini version is ideal for tagging roll-cages, boxes, furniture or tools. They attach to any material, and deliver excellent size-to-performance ratios. On the other end of the spectrum, the EXO 2000 and 3000 tags, designed for heavy-use vehicles and containers, impress with read ranges up to 108ft (33m) and options for ATEX/IECEX/C1D1 environments.

In short, EXO tags provide the durability of an encased RFID tag in a small footprint for harsh environments with some of the options in the range being the most rugged tags on the market, even withstanding a "sledgehammer test".



TECHNOLOGY HIGHLIGHTS:

- **Extreme durability** – resistant to outdoor elements as well as blunt and sharp impact
- **Multiple mounting options** – glue, screw, rivet or weld
- **Enhanced reliability** – read-write on any material, up to 127.9 ft (39 m)
- **Broadband frequency** – for worldwide use

TECHNOLOGY HIGHLIGHTS:

- Worldwide operating frequencies from 860 to 960 MHz
- Fully interoperable; standards compliant
- Reliable performance on both metal and non-metal surfaces
- Waterproof under high pressure / high temperature conditions; chemical and impact resistant
- Mounting options include nails, screws, rivets, welding and glues

EXO Tag



HID Global can create a custom tag solution to fit your application requirements for chip type, dimensions, programming and materials.



APPLICATION AREAS

Asset tracking and logistics

- Postal and road toll management
- Truck, wagon and train tracking
- Supply chain management: Pallet and goods tracking
- Furniture, boxes and tools
- Postal tracking and process flow
- Retail supply chain

Returnable transport items




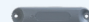
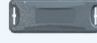

- Shipping container tracking
- Manufacturing tote tracking

Waste management

- Commercial and industrial bin identification

Automotive

- Automotive supply chain tracking
- Post paint process tracking

	EXO					
	InLine Mini	InLine	InLine S	1000	2000	3000
						
Base Model Number	6F1987-102	6M6980-102 (grey) 6M6980-120 (grey, 1D-barcode) 6M6981-102 (weld)	6M6983-102 6M6984-102 (slim weld)	CP12826	CP15974	CP15979
ELECTRONIC						
Operating Frequency	865-928 MHz (Global)					
Chip Type	Monza R6	M730		Monza 4QT	M730	
Memory	96 bit EPC + 48 bit TID	128 bit EPC		128 bit EPC + 96 bit TID + 512 bit user memory	128 bit EPC	
Anti-Collision	Yes					
Reading Distance (2W reader ERP, free space)	Up to 9.8 ft (3 m)	Up to 32.8 ft (10 m)	Up to 26.2 ft (8 m)	Up to 32.8 ft (10 m)	Up to 95.1 ft (29 m)	Up to 127.9 ft (39 m)
PHYSICAL						
Dimensions	2.4 x 0.7 x 0.3 in (60 x 18 x 8 mm)	3.8 x 1.1 x 0.6 in (97 x 27 x 15 mm) Weld : 4.1 x 1.4 x 0.6 in (105 x 35 x 15 mm)	3.8 x 1.1 x 0.4 in (97 x 27 x 10 mm) Weld : 4.1 x 1.4 x 0.4 in (105 x 35 x 10 mm)	4.3 x 0.9 x 0.5 in (110 x 25 x 12.7 mm)	5.5 x 2.0 x 0.62 in (139.2 x 53 x 15.8 mm)	6.8 x 2.7 x 0.7 in (174 x 70 x 17.8 mm)
Mounting Method	Screw, rivet	Screw, weld (special models to glue on metal available on request)		Screw, Rivet, or premium foam		
Screw Mounting Hole	Ø 0.2 in (4.5 mm)	Ø 0.2 in (5.2 mm)		Ø 0.2 in (5.0 mm)	Ø 0.26 in (6.5 mm) hole with 0.126 x 0.94 in (3.2 mm x 24 mm) slot	
Affixes To	All surfaces, including metal, plastic, wood					
Housing Material	High-impact plastic, Weld : stainless steel ring			PC ABS Blend		
Color	Gray			Gray (Transparent Option)	Gray	
Weight	0.2 oz (6.3 g)	0.5 oz (16 g) Weld : 0.6 oz (18 g)	0.4 oz (12 g) Weld : 0.5 oz (14 g)	0.6 oz (18.3 g)	2.2 oz (64 g)	3.0 oz (85 g)
CHEMICAL AND MECHANICAL						
Water	IP68, IP69K, 176° F (80° C), 100 bar, 30 sek. 16 l/min			IP68, 68° F (20° C), 1 m x 24 h		
Withstands Exposure To	Mineral oil, petroleum, salt mist, vegetable oil; up to 80% humidity at 158° F (70° C)			Mineral oil, 5% caustic soda, 10% salt water, vegetable oil		
Vibration & Shock	IEC 68.2.6 / IEC 60068-2-27:2008			MIL STD 810-G		
Impact	IEC 62262-IK07	IEC 62262-IK09		3kg steel, 1 m	25kg steel, 1m	25kg steel, 1m
Axial/Radial Force	1000 N, 10 sec					
THERMAL						
Storage	-40° to +185° F (-40° to +85° C), 1x1000 h-40° to +185° F (-40° to +85° C), 1x1000 h			-40° to +185° F (-40° to +85° C)		
Operating Temperature	-40° to +185° F (-40° to +85° C)					
Shock/Fatigue	-40° to +185° F (-40° to +85° C), 100 x 5 min with 20 sec transition					
OTHER						
Standards	UHF EPC Class 1 Gen 2, ISO 18000-6C, ISO 17364, DIN 40050-9					
Options	Custom embossed logo, no logo or custom tag color. Laser engraving of custom logo, barcode or text on grey tag versions. By default, grey tags are supplied without logo or laser engraving. ATEX/IECEX, C1D1					
Box Size	250 pcs.	240 pcs.	360 pcs.	432 pcs.	140 pcs.	66 pcs.
Warranty	2 Years					

