



HF680 (Second Generation)/ HF680E

Hands-Free Area-Imaging Scanner

Quick Start Guide

Introduction

This quick start guide provides set up steps for the HF680 (Second Generation) and HF680E hands-free scanners.

Refer to your user guide for information about cleaning your device.

About HF680 Second Generation Models

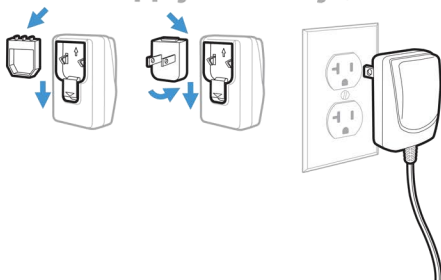
This guide is only intended for HF680 Second Generation use. Before starting, verify the scanner's part number includes “-R” after HF680 (e.g., HF680-Rx-xxxxxx). The part number can be found on the label on the bottom of your device.

Note: For earlier models of the HF680 scanner, refer to HF680-EN-QS, available for download at sps.honeywell.com (region dependent).

Getting Started

Turn Off the computer's power before connecting the scanner, then power up the computer once the scanner is fully connected.

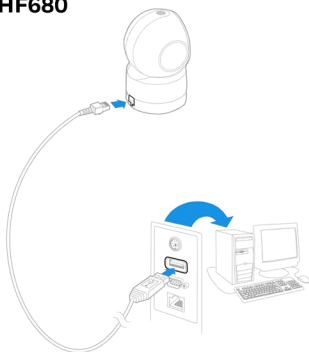
Power Supply Assembly (if included)



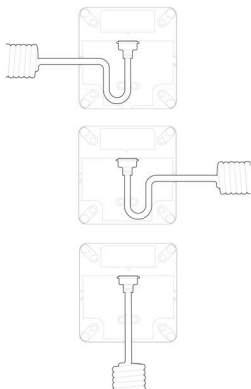
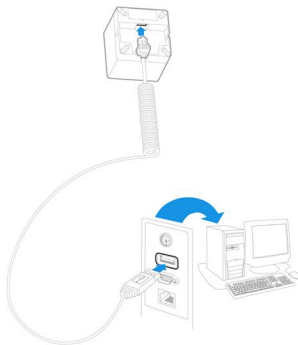
Connecting the Scanner

USB

HF680

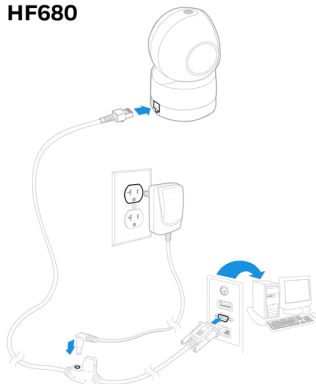


HF680E

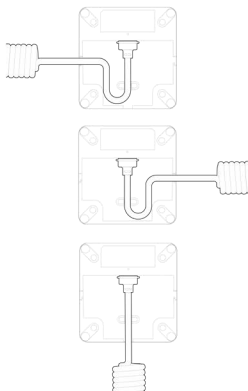
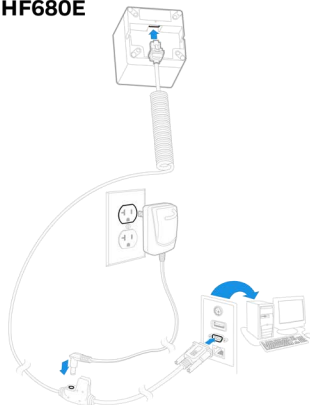


RS232 Serial Port

HF680



HF680E



Reading Techniques

Align the barcode to the center of the scanner to acquire a good read.

Hold the scanner close to smaller barcodes, and farther away from large barcodes to get a proper read.

If the barcode is highly reflective (e.g., laminated), you may need to tilt the scanner at an angle so the barcode can be scanned.

Standard Product Defaults

The following barcode resets all standard product default settings.



Standard Product

Note: Resetting to factory defaults will not change the interface setting of the product. For example, if the unit's interface is set to USB, it will remain USB after the standard product barcode is scanned.

Interface Types

The HF680 supports three interface types: USB PC keyboard, USB serial and RS232 serial port. To alter interface type, scan the corresponding barcode below:



USB PC Keyboard



USB Serial



RS232 Serial Port

Keyboard Country

Scan the appropriate country code that follows to program the keyboard layout for your country or language. By default, national character replacements are used for the following characters: # \$ @ [] \ | ^ ' { } ~

Refer to the ISO 646 Character Replacements chart in your User Guide to view the character replacements for each country.



USA (Default)



Belgium



Denmark



Finland



France



Germany/Austria



Great Britain



Italy



Norway



Spain



Switzerland

Note: *For a complete list of country codes, see the User Guide for your product.*

Scan Modes

When in IR Trigger mode, the scanner uses an infrared (IR) sensor to detect objects and start to scan and decode barcode symbols.

When in Presentation mode, the scanner is activated when it “sees” a barcode.

In Streaming Presentation mode, the scanner’s illumination remains on all the time to continuously search for barcodes.



IR Trigger Mode



Presentation Mode



Streaming Presentation
Mode

Suffix

If you want a carriage return after the barcode, scan the **Add CR Suffix** barcode. To add a tab after the barcode, scan the **Add Tab Suffix** barcode. Otherwise, scan the **Remove Suffix** barcode to remove the suffixes.



Add CR Suffix



Add Tab Suffix



Remove Suffix

Add Code ID Prefix to all Symbologies

Scan the following barcode if you wish to add a Code ID prefix to all symbologies at once.



Add Code ID Prefix To All Symbologies
(Temporary)

Note: *For a complete list of Code IDs, see the User Guide for your product.*

Function Code Transmit

When this selection is enabled and function codes are contained within the scanned data, the scanner transmits the function code to the terminal. Charts of these function codes are provided in your User Guide. When the scanner is in keyboard wedge mode, the scan code is converted to a key code before it is transmitted.



Enable
(Default)



Disable

Data Format Editor Instructions

The following are abbreviated instructions for entering a data format. For complete instructions refer to your User Guide.

- Step 1. Scan the **Enter Data Format** symbol.
- Step 2. Primary/Alternate Format: scan **0** for Primary Format
- Step 3. Terminal Type: scan **099** for any terminal type
- Step 4. Code I.D.: scan **99** for any barcode type
- Step 5. Length: scan **9999** for any length barcode.
- Step 6. Editor commands: use the Programming Chart that follows.
- Step 7. Scan **Save** to save your entries.



Enter Data Format



Clear All Data Formats



Save

Programming Chart



0



1



2



3



4



5



6



7



8



9



A



B



C



D



E



F



Save

EZConfig for Scanning

To access additional features for the scanner, use *EZConfig for Scanning*, an online configuration software tool, available from our [website](#).

Patents

For patent information, see www.hsmpats.com.

Disclaimer

Honeywell International Inc. (“HII”) reserves the right to make changes in specifications and other information contained in this document without prior notice, and the reader should in all cases consult HII to determine whether any such changes have been made. HII makes no representation or warranties regarding the information provided in this publication.

HII shall not be liable for technical or editorial errors or omissions contained herein; nor for incidental or consequential damages resulting from the furnishing, performance, or use of this material. HII disclaims all responsibility for the selection and use of software and/or hardware to achieve intended results.

This document contains proprietary information that is protected by copyright. All rights are reserved. No part of this document may be photocopied, reproduced, or translated into another language without the prior written consent of HII.

Copyright © 2023 Honeywell Group of Companies. All rights reserved.



atlas**RFID**store

(205) 383-2244

sales@atlasRFIDstore.com

www.atlasRFIDstore.com