



# 8675i

---

Rugged Compact Wearable Scanner

## Quick Start Guide

## Out of the Box

Make sure that your shipping box contains these items:

- Honeywell 8675i Rugged Wearable Compact Scanner
- Rechargeable battery
- Product Documentation

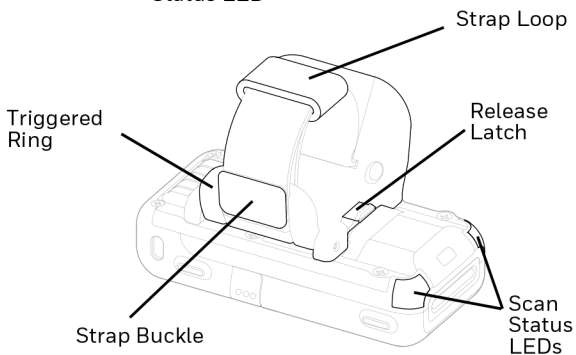
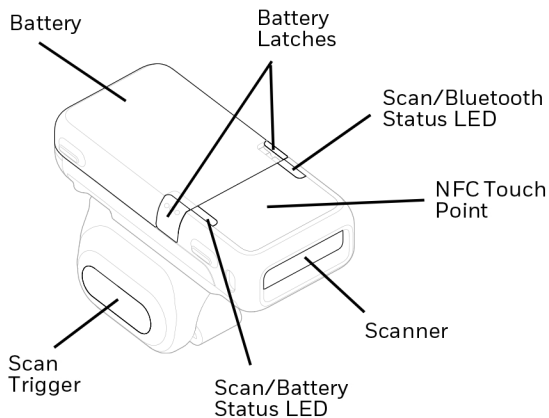
If you ordered accessories for your device, verify that they are also included with the order. Be sure to keep the original packaging in case you need to return the device for service.



**Before you attempt to use, charge or replace the battery in the device, carefully read all labels, markings and product documentation provided in the box or online at [sps.honeywell.com](https://sps.honeywell.com). To learn more about Battery Maintenance for Portable Devices, go to [honeywell.com/PSS-BatteryMaintenance](https://honeywell.com/PSS-BatteryMaintenance).**

**Avant d'essayer d'utiliser, de charger ou de remplacer la batterie de l'appareil, lisez attentivement toutes les étiquettes, marquages et documentation du produit fournis dans la boîte ou en ligne à [sps.honeywell.com](https://sps.honeywell.com). Pour en savoir plus sur l'Entretien de Batteries pour Appareils Portables, consultez-le [honeywell.com/PSS-BatteryMaintenance](https://honeywell.com/PSS-BatteryMaintenance).**

## Device Features



## Charging the Battery

The 8675i rugged compact wearable scanner ships with a partially charged battery. The battery must be fully charged before first use. The following charging stations are available for the device and must be purchased separately:

- MB8-BAT-SCN10
- MB24-BAT-SCN10
- MB4-SCN10
- MB12-SCN10
- MB1-SCN10



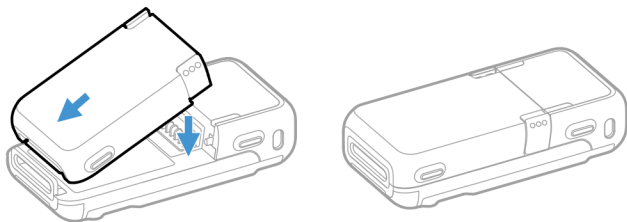
**We recommend the use of Honeywell accessories and power adapters. Use of non-Honeywell accessories or power adapters may cause damage not covered by the warranty.**



**Ensure all components are dry prior to mating the computers and batteries with peripheral devices. Mating wet components may cause damage not covered by the warranty.**

## Install the Battery

The device ships with a 3.85V, 570 mAh battery manufactured by Honeywell International Inc.

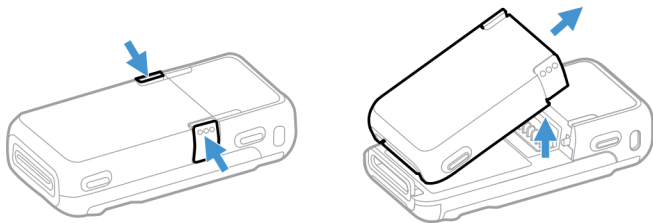


**Use only Honeywell battery model BAT-SCN10.**

## Replace the Battery

**Note:** *The battery should be replaced in an environment free from excessive dust or particulate to avoid an internal buildup of dust in the unit.*

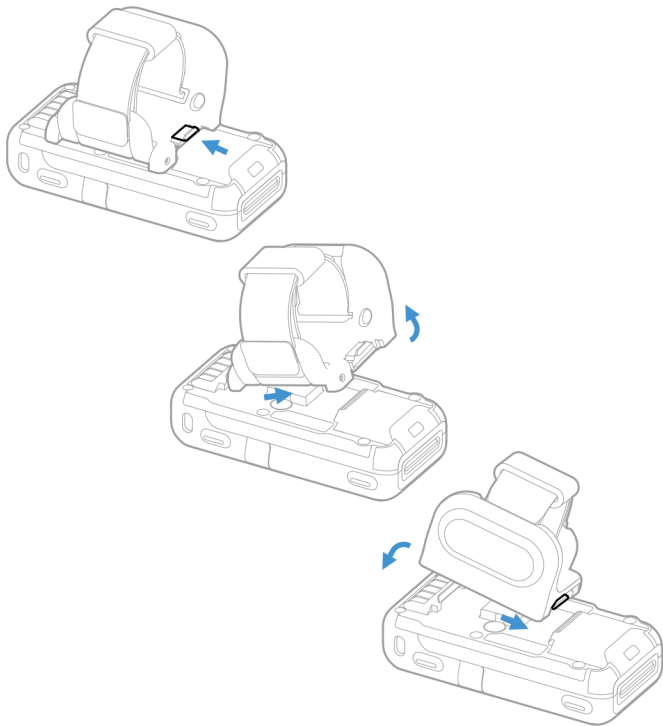
When the battery is low, the 8675i beeps, vibrates, and the Battery LED flashes. To replace the battery, squeeze the battery latches and lift up on the battery.



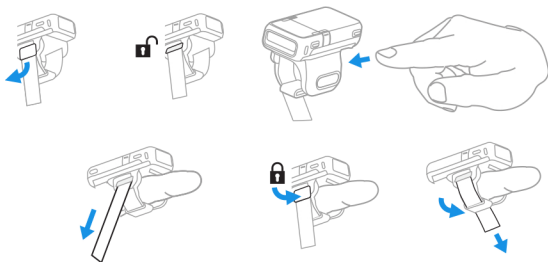
Replace the battery by aligning it with the back of the device and snapping it in to the device.

## Right or Left Handed Operation

To release the finger trigger, turn over the device. Press the Release Latch on the bottom. Rotate the trigger and snap it into place to change the operation to the correct hand.



## Attach the Device to Your Finger



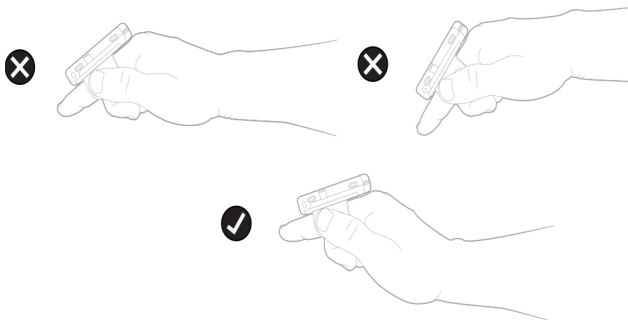
Lift up on the Strap Buckle to unlock the strap. Insert your finger through the Trigger Ring. Pull the excess strap down. Press down on the Strap Buckle. Pull the excess strap through the Strap Loop.

## Power Up the Device

Press the trigger to power up the device.



## Wrist Position When Scanning



**Warning: Do not stare directly into the laser beam.**

## How to Scan a Barcode

The 8675i scanner has a view finder that projects a bright laser aiming pattern. This aiming pattern should be centered over the barcode, but it can be positioned in any direction for a good read.

**SR Models:**



**FR Models:**



## Connect the Device via Bluetooth®

### Pair with a PC or Laptop Bluetooth Serial Port: Host Reconnect Mode

The 8675i can pair with host Bluetooth devices such as personal computers, laptops, and tablets. In this mode, the host will continually attempt to connect with the device. If the device and the host become disconnected, the host will manage the reconnection.

1. Scan the **Host Reconnect Mode** barcode, below.



PAPSPP;BT\_DNG1.

Host Reconnect Mode

2. Set your host device so it searches for other Bluetooth devices. (Refer to your host device's User's Guide for pairing instructions.)
3. When your host device has located the 8675i, you can select it from the list displayed.

**Note:** Refer to the 8675i User's Guide if your host device displays a PIN.

## Pair with a PC or Laptop Bluetooth: HID Keyboard Mode

In this mode, the 8675i pairs with a Bluetooth device using a HID keyboard.

1. Scan the **Bluetooth HID Keyboard Connect** barcode below.



PAPBTH.

Bluetooth HID Keyboard Connect

2. Set your host device so it searches for other Bluetooth devices. (Refer to your host device's User's Guide for pairing instructions.)
3. When your host device has located the 8675i, you can select it from the list displayed.

**Note:** Refer to the 8675i User's Guide if your host device displays a PIN.

## Disconnect from the Host

Once your device has been connected to a host, you must disconnect it in order to communicate with a different device. Scan the **Bluetooth Disconnect** barcode to unlink the device from the currently linked host.



BT\_DNG4,ADR.

Bluetooth Disconnect

## Pair with an Android™ Mobile Device

### Tap and Pair

You can pair your Android™ phone with the 8675i by touching the devices together.

1. Make sure the NFC setting is **On** in your phone.
2. Touch the Android phone to the device.
3. The phone recognizes the device and prompts you to pair.
4. Verify the pairing of the 8675i in your phone's Bluetooth settings.

## Pair with an Android, Apple™ or Windows® Mobile Device

1. The 8675i can pair with Android, Apple, and Windows mobile devices, excluding Windows CE and Mobile. Set your mobile device so it searches for other Bluetooth devices. (Refer to your mobile device's User's Guide for pairing instructions.)
2. Scan the **Bluetooth HID Keyboard Connect** barcode below.



PAPBTH.

Bluetooth HID Keyboard Connect

3. On the mobile device, the 8675i device is shown as a keyboard. Click on it to pair.

## Pair with a Honeywell Vehicle Mount Computer

The 8675i can pair with Honeywell vehicle mount computers, such as the Thor VM1 or VM2, or with Tecton mobile computers.

1. Scan the **Bluetooth HID Keyboard Disconnect** barcode below.



Bluetooth HID Keyboard Disconnect

2. Use the 8675i to scan the EZPairing barcode that is either supplied with the device, attached to the device, or displayed on the screen. The EZPairing barcode begins with {FNC3}LnkB, followed by 10 digits, like the sample below.



## Pair with a Vocollect Device

In this mode, the scanner will continually attempt to connect with the host. If the scanner and the host become disconnected, the scanner will manage the reconnection.

1. Scan the **Bluetooth Serial Port Profile Connect** barcode below.



### **Bluetooth Serial Port Profile Connect**

2. Configure the 8675i with the termination characters used for your workflow. This is often a carriage return and line feed, which can be programmed by scanning the following barcode:



### **CR/LF Suffix**

Refer to the 8675i User Guide if you require other termination characters.

3. In the VoiceConsole, set the Vocollect device to:
  - Pairing type **Bluetooth Scanner**
  - Connection mode **Device listens for peripheral connection**
  - Security type **Disabled**
4. Simple scan-based pairing can be accomplished by creating a dedicated pairing barcode and applying it to

each Vocollect device. The EZPairing barcode begins with {FNC3} LnkB, followed by 12 digits, like the sample below.



5. The Bluetooth LED flashes continuously when the 8675i pairs with a host. Once the 8675i battery is charged and you have paired it to a host device, you may begin scanning barcodes.

## Reset Custom Defaults

If you want the custom default settings restored to your 8675i, scan the **Activate Custom Defaults** barcode below. This is the recommended default barcode for most users. It resets the 8675i to the custom default settings. If there are no custom defaults, it resets the 8675i to the factory default settings. Any settings that have not been specified through the custom defaults are defaulted to the factory default settings.



### **Activate Custom Defaults**

**Note:** *Scanning the Defaults barcode also causes both the 8675i and the host to perform a reset and become unlinked. You must relink (pair) the 8675i to the host.*



## Support

Go to [sps.honeywell.com](https://sps.honeywell.com) and select **Support** to search our knowledge base for a solution or to log into the Technical Support portal.

## User Documentation

For the user guide and other documentation, go to [sps.honeywell.com](https://sps.honeywell.com).

## Limited Warranty

For warranty information, go to [sps.honeywell.com](https://sps.honeywell.com) and select **Support >Warranties**.

## Patents

For patent information, see [www.hsmpats.com](http://www.hsmpats.com).

## Disclaimer

Honeywell International Inc. (“HII”) reserves the right to make changes in specifications and other information contained in this document without prior notice, and the reader should in all cases consult HII to determine whether any such changes have been made. HII makes no representation or warranties regarding the information provided in this publication.

HII shall not be liable for technical or editorial errors or omissions contained herein; nor for incidental or consequential damages resulting from the furnishing, performance, or use of

this material. HII disclaims all responsibility for the selection and use of software and/or hardware to achieve intended results.

This document contains proprietary information that is protected by copyright. All rights are reserved. No part of this document may be photocopied, reproduced, or translated into another language without the prior written consent of HII.

Copyright © 2021–2022 Honeywell International Inc. All rights reserved.

Microsoft® Windows®, Windows NT®, Windows 2000, Windows ME, Windows XP, and the Windows logo are trademarks or registered trademarks of Microsoft Corporation.

The Bluetooth® word mark and logos are owned by Bluetooth SIG, Inc.

Android™ is a trademark of Google Inc.

Apple is a trademark of Apple Inc., registered in the U.S. and other countries.