



### mPad+ AT A GLANCE

- Mini IoT gateway with
  - UHF RAIN RFID reader
  - Wi-Fi connectivity
  - BLE - Bluetooth low Energy gateway
- UHF RAIN RFID reader with integrated antenna for short distance reading, up to 0.8m
- 802.11n 2.4Ghz Wi-Fi radio
- BLE beacons gateway for capturing beacons and sensors data at distances up to 150m

### CONNECTIVITY

- Wi-Fi for data communications and remote management
- Bluetooth 5 for beacons scanning
- USB 2.0 port for RFID data communications and DC power

### COMMUNICATION PROTOCOLS

- RAIN RCI
- HTTP(s) REST
- MQTT(s)
- Sockets
- Websockets

Identix mPad+ is a high performance ultra-compact IoT gateway that combines reading of passive RAIN RFID tags and BLE beacon scanning capabilities in the same device.

mPad+'s Wi-Fi connectivity and support for popular IoT protocols such as MQTT and HTTP allows fast and easy integration with all kinds of business applications.

The embedded RAIN RFID reader in mPad+ is specifically designed for applications which require short reading distances up to 0.8m. The built-in circular polarized antenna enhances ease of readability while reduces the hardware and deployment costs.

mPad+ RFID reader can optionally operate in "keyboard wedge mode" (keyboard emulation via USB HID) along with the automatic decoding of RFID EPC data in GS1 format (SGTIN96-198) to UPC / EAN-13. These features allow seamless and immediate integration with all applications prepared for use with barcode readers without the need of new software development and integration.

The modern and stylish design together with its competitive cost, make the mPad+ the ideal device for retail applications, especially fashion and apparel. When used with a POS device, it allows for fast, secure, and efficient item reads, reducing checkout times and improving customer satisfaction.

With easy integration, simplicity, robustness, and low cost, mPad+ is the ideal device for use in different applications and environments: retail, healthcare, libraries, and others.

### Product Details

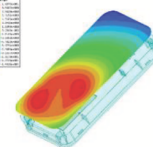
- UHF RAIN RFID reader/encoder - ISO18000-63
- Operating frequency: 902Mhz to 928Mhz
- Max transmit power: +23dBm
- Integrated CP antenna with 0.5 dBi gain
- Communications via Wi-Fi network or USB
  - Network protocols: MQTT(s), RAIN RCI HTTP(s) REST, sockets and websockets
  - USB: keyboard wedge (HID), RAW ASCII and Transparent mode (Impinj IRI API)

WiFi 802.11n radio up to 150Mbps data rate

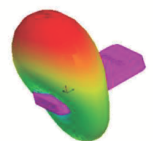
- Bluetooth BLE beacon gateway compatible with
  - Apple iBeacon
  - Google EddyStone
  - Minew sensor beacons (temperature, humidity, accelerometer, luminosity etc.)
- Communication protocols: MQTT(s), HTTP(s) REST, sockets and websockets

#### General

- One USB 2.0 port for power and optional RFID data
- Weight: 100g
- Dimensions: 116 x 60 x 12 mm
- Ingress protection rating: IP54
- Operating temperature: -20°C to +65°C
- Certifications: FCC and Anatel



Near Field



Far Field Directivity