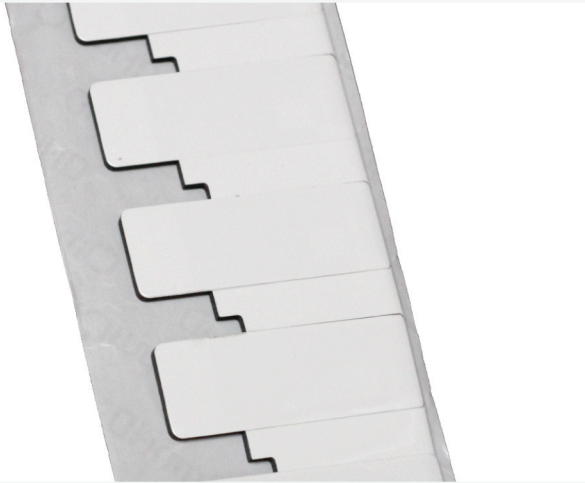


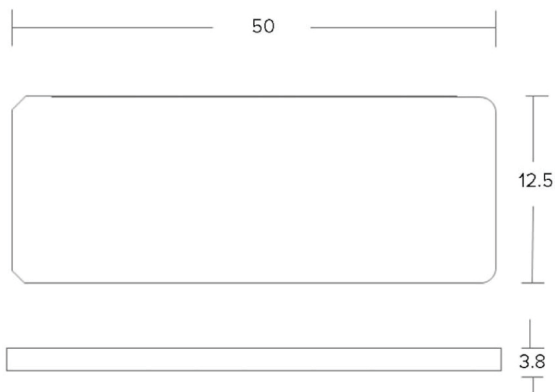
## [ Products ] you can identify with



### Physical Specifications

<b>Material</b>	White synthetic label with transparent over laminate
<b>Size</b>	50 x 12.5 x 3.8 mm, 1.9 x 0.49 x 0.14 in
<b>Weight (g)</b>	0.85
<b>Attachment</b>	Film adhesive (STD)

### Dimensions



Measurements shown in mm

## Flex 600

The Flex 600 is a low profile, small form factor RFID tag designed specifically for attachment to office equipment, IT assets or RTI's. With its superior RF performance, this tag excels in portal applications where the read range can be expanded. In addition, the Flex 600 tag is well suited to indoor applications where a low-cost option is needed.

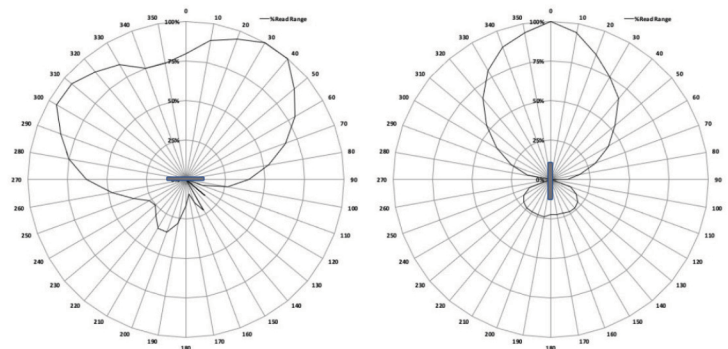
### RF Specifications

<b>Radio Protocol</b>	EPC Class 1 Gen2v2
<b>Frequency Range</b>	866 – 868 MHz (EU) 902 – 928 MHz (US)
<b>Read Range – Fixed Reader</b>	Up to 6m (19.68 feet)
<b>Read Range – Handheld Reader</b>	Up to 3m (9.84 feet)
<b>On Metal or Balanced</b>	Optimized for metal
<b>Material Compatibility</b>	Metal
<b>IC Type (Chip)</b>	Monza R6-P
<b>Memory</b>	EPC - 128 (96) bits User - 32 (64) bits Unique TID - 48 bits

EPC and User memory are reprogrammable. UTID is locked at point of manufacture by IC manufacturer.

### Radiation Patterns

#### On Metal



## [ Products ] you can identify with



With a small footprint and consistent RF performance, the Flex 600 is ideally suited to applications such as:

- Office equipment
- Portals
- Light outdoor use

### Certifications



### Environmental Specifications

<b>Operating Temperature</b>	-40°C to +85°C
<b>IP Rating</b>	IP68

### Ordering Information

<b>Warranty</b>	1 year
<b>Part Number / Order Codes / Order Numbers</b>	EU -CP 14622
	US - CP14623
<b>Supply Format</b>	380 labels / roll