

Specialty Tags

CATALOG COMPARISON GUIDE

Product Name		 GLOBAL	 GLOBAL			 GLOBAL	
Typical Applications		Rack mounted servers Routers and blades General IT and office equipment	Rack mounted servers Routers and blades General IT and office equipment	Tool tracking Attachment to plastic handles or plastic tools Surface mounting to plastic components of high value assets	Tracking returnable transit items Warehouse storage locations Rail carriage identification	Tracking returnable transit items within global supply chains Automotive stillage management Large rental equipment tracking	Maintenance for deployed field equipment Chemical drum tracking Beverage keg tracking
RF Specifications	Frequency Range (MHz)	860-930 (GS)	860-930 (GS)	902-928 (US) 866-868 (EU)	902-928 (US) 866-868 (EU)	860-960 (GS)	902-928 (US) 865-868 (EU)
	Read Range (m) – Fixed reader Handheld reader	Up to 2.0 Up to 0.9	Up to 4.5 Up to 2.0	Up to 3.5 Up to 1.75	Up to 12.0 (US), Up to 10.0 (EU) Up to 6.0 (US), Up to 5.0 (EU)	Up to 8.0 (GS) Up to 4.0 (GS)	Up to 6 (US), Up to 5 (EU) Up to 3.0 (US), Up to 2.5 (EU)
	Material Compatibility	Metal & non-metallic substrates	Optimized for Metal	Plastic & non-metallic substrates only	Metal and non-metallic substrates	Optimized for Metal substrates	Optimized for Metal substrates
	IC Type	Monza 4QT	Monza 4QT	Alien Higgs 3	Alien Higgs 3	Alien Higgs 3	Alien Higgs 3
Physical and Environmental Specifications	Material	HIPS core with synthetic label	HIPS core with synthetic label	Painted Black	ABS or Polycarbonate	Polycarbonate	Durable Thermoplastic Material
	Size (mm)	35 x 10 x 5	35 x 10 x 5	17.6 x 7.1 x 4.1	104 x 33 x 8.4	51 x 42 x 12.2	48.5 x 38.0 x 9.5
	Weight (g)	1.76	1.76	2.6	22.0	19.5	11.2
	Operating Temperature	-40 to +85°C	-40 to +85°C	-20 to +85°C -20 to +85°C	ABS: -40 to +55 °C Polycarbonate: -40 to +85 °C	-40 to +85 °C +105 °C	-40 to +85 °C
	Ingress Protection	IP54	IP54	IP68	IP68	IP68	IP68
	Shock and Vibration *	MIL STD 810-G	MIL STD 810-G	MIL STD 810-G	MIL STD 810	MIL STD 810	MIL STD 810
	Attachment	Foam adhesive	Foam adhesive	Film adhesive (included) Permanent liquid adhesive (option)	Manual (std) Premium Foam adhesive (option)	Manual (std.) Premium Foam adhesive (option)	Industrial Foam Tape
Order Codes [†]	157 – GS	156 - GS	052 - EU, US	020 – US, EU	024 – GS	025 – US, EU	

[†] Order Option Codes are listed on the datasheets. *Products tested by third party in line with use case requirements.

Specialty Tags

CATALOG COMPARISON GUIDE

Product Name		 GLOBAL Adept 400	 GLOBAL Adept 400	 GLOBAL Adept 500	 GLOBAL Adept 650P	HIGH MEMORY  GLOBAL Adept 850	 GLOBAL Adept 360°
Typical Applications		Piping Valves Processing Equipment	Piping Valves Processing Equipment	Gas Cylinders Beverage Kegs	Personnel Management Building Access Asset Tracking Logistics non-metal packaging	Manufacturing & Supply Chain Automotive Outdoor & Industrial Operations	Very heavy industry applications. Identification of lifting equipment for maintenance and inventory management.
RF Specifications	Frequency Range (MHz)	860-930 (GS)	902-928 (US only)	860-940 (GS)	860-930 (GS)	860-960 (GS)	860-930MHz (GS) 13.56MHz (HF opt.)
	Read Range (m) Fixed reader Handheld reader	Up to 2.25 = 5 layer, Up to 4.0 = 4 layer Up to 1.35 = 5 layer, Up to 2.0 = 4 layer	Up to 4.5 Up to 1.8	Up to 5.0 Up to 5.0	Up to 7.0 Up to 3.5	Up to 8.5 Read, Up to 4 Write	Up to 10 (UHF), Up to 0.1 (HF opt) Up to 5.0 (UHF), Up to 0.1 (HF opt)
	Material Compatibility	Optimized for Metal	Optimized for Metal	Optimized for Metal	Optimized for Non-metallic substrates	Optimized for Metal	Metal and non-metallic substrates
	IC Type	Monza 4QT	Alien Higgs 3	Alien Higgs 3	Alien Higgs 3	Qstar-5A	Alien H3 (UHF) NXP I-Code (HF opt.)
Physical and Environmental Specifications	Encasement	Stainless Steel with Ceramic Core	Stainless Steel with ceramic core	Durable Thermoplastic	PVC Synthetic card	ABS	Steel frame
	Size (mm)	45 x 30.5 x 15.5 = 5 layer 39 x 30.5 x 11.2 = 4 layer	36 x 25 x 13.5 = 5 layer 30 x 25 x 8.2 = 4 layer	37 x 37 x 11.5	85.5 x 54 x 1.0	65 x 45 x 8	136.5 x 48 x 5.5
	Weight (g)	94g = 5 layer, 53g = 4 layer	58g = 5 Layer, 35g = 4 layer	9.8	6.0	34	126.0
	Operating Temperature	-20 to +65°C	-20 to +65°C	-20 to +65°C	-20 to +65°C	-20 to +85°C	-40 to +85°C
	Ingress Protection	IP68	IP68	IP68	IP68	IP68	IP68
	Shock and Vibration*	MIL STD 810-G	MIL STD 810-G	MIL STD 810-G	MIL STD 810-G	MIL STD 810-G	MIL STD 810-G
	Attachment	Steel strap or welded = 5 layer Epoxy ¹ or welded = 4 layer	Steel strapping or welded = 5 layer Epoxy ¹ or welded = 4 layer	Premium foam (option)	Hang Film adhesive (option)	Rivet/screw (not included) Foam or thin film Adhesive (option)	Tether attachment (not included)
Order Codes [†]	115 – GS For 4 layer, add option code :523	080 – (US only) For 4 layer, add option code :523	045 – GS	145 – GS	114 – GS	032 – GS	

[†] Order Option Codes are listed on the datasheets. *Products tested by third party in line with use case requirements. ¹ Customer to validate their epoxy

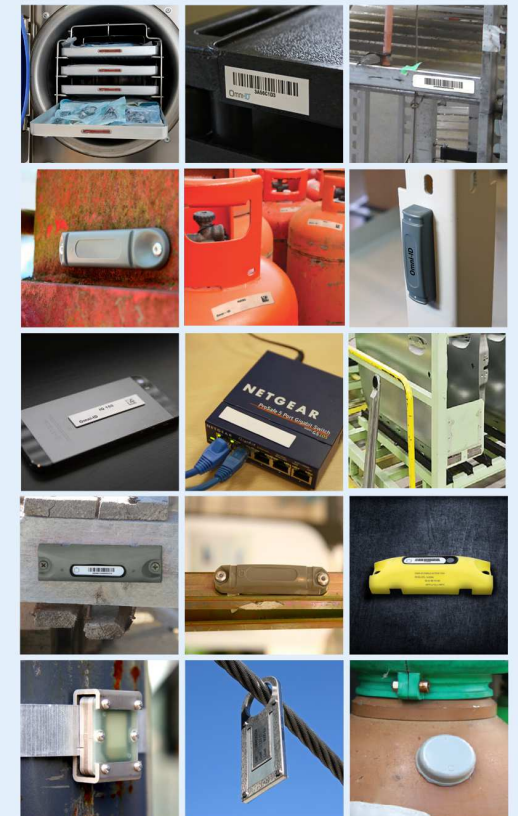
Specialty Tags

CATALOG COMPARISON GUIDE

Product Name		 Pipe	 GLOBAL IQ 800G	 IQ 1200G
Typical Applications		Road Toll Collection Vehicle Access Control Vehicle Permits	Road Toll Collection Vehicle Access Control Vehicle Permits	Vehicle Access Control Vehicle Permits Vehicle Registration
RF Specifications	Frequency Range (MHz)	866-868 (EU) 902-928 (US)	860-960 (GS)	866-868 (EU) 902-928 (US)
	Typical Read Range (m)*Fixed Reader	Up to 12.0	Up to 8.0	Up to 12.0
	Read Range (m) - Handheld reader	Up to 12.0	Up to 5.0	Up to 7.0
	Material Compatibility	Optimized	Optimized for Glass	Optimized for Glass
	IC Type	Alien Higgs 3	Alien Higgs 3	Alien Higgs 3
Physical and Environmental Specifications	Material	Polypropylene structure + synthetic label	PET Facestock	PET Facestock
	Size (mm)	79 x 74 x 20.0	99 x 22 x 0.2	92 x 26 x 0.2
	Weight (g)	44	1	1
	Operating Temperature	-40 to +65°C	-20 to +60°C	-20 to +60°C
	IP Rating	IP65	IP68	IP68
	Shock and Vibration	MIL STD 810-G	MIL STD 810-G	MIL STD 810-G
	Attachment	Strap- not included	Self Adhesive (std)	Self Adhesive (std)
Order Codes†	030 – US, EU	121 – GS	122 – US, EU	

Need a Custom Tag?

We do that too.



† Order Option Codes are listed on the datasheets.