

# RPOR Series Portal Antenna

## GETTING STARTED QUICK GUIDE



## SAFETY INSTRUCTIONS

The RPOR Portal Antenna, Multi-linear UHF RAIN RFID Portal was built for optimum safety and ease of installation. However, certain precautions apply whenever you assemble and install equipment. Be sure to read the entire manual carefully. In particular, note the following safety precautions:

Keep children and pets away from the equipment prior to installation. DO NOT leave children unattended in the same room as equipment until securely fastened.

Fasten using approved mounting brackets only and ensure all electrical connections are properly secured. Care should be taken in mounting and dismounting Portal Antenna units and mounting brackets.

Ensure all four bolts are secured when stacking units. Stacking higher than two units is done at your own risk. The RPOR Series is not intended for outdoor use.

## TOOLS REQUIRED

Installation of RPOR Portal Antenna requires the following tools (not included):



No. 2 Drive Size Phillip's Screw Driver or Bit



3/8" Wrench or Socket



9/16" Wrench or Socket

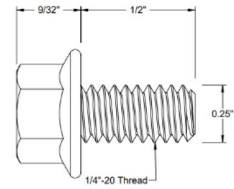
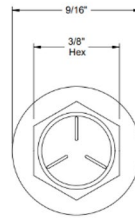


3/16" Hex Wrench or Bit (Used only for Optional Floor Mount Leveling)

# INSTALLATION

## STEP 1:

Open Antenna quick access rear panel by removing the (6) 1/4"-20 1/2" Flanged Hex Screws using 3/8" wrench or socket (not included).



**DO NOT OPEN**



**CAUTION:** Do not remove screws from front of Antenna. Front bezel removal voids warranty.

# INSTALLATION

## STEP 2:

Locate and remove RPOR Antenna hardware bag taped to electronics mounting plate. 8-32 Phillips screws (screwdriver not included) are used for mounting RFID reader hardware. 3/8"-16 Hex Head screws are used for securely connecting multiple RPOR Antenna units together.



## STEP 3:

If desired, remove electronics mounting plate by opening quick access side panels. Plate is secured by (4) 1/4"-20 1/2" Flanged Hex **SCREWS**. To remove, loosen two screws slightly then remove completely two screws on the opposite side using 3/8" wrench or socket (not included)



# INSTALLATION

**STEP 4:**

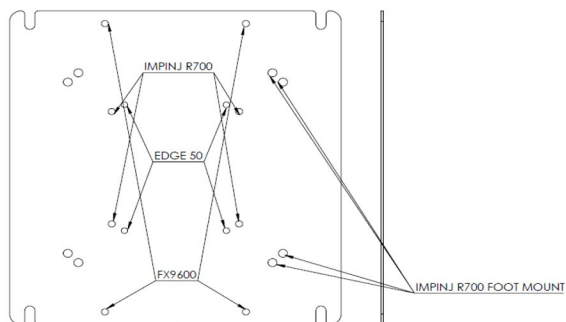
Once mounting plate screws are removed from one side, slide mounting plate to remove from RPOR Antenna.



Slide mounting plate to remove

**STEP 5:**

Attached RFID Reader to mounting plate using included No. 2 Phillips screws and hex nuts or manufacturer's hardware. Mounting plate fits leading Impinj, Zebra, and HID EDGE RFID readers.



**Caution:** Ensure all cables are disconnected from RFID Reader before removing or installing mounting plate.

# INSTALLATION

## STEP 6:

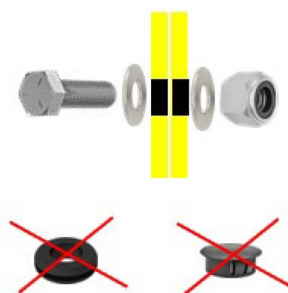
Install locking panel plugs to access holes not used to prevent dust and debris from entering RPOR Antenna rear compartment.



**Caution:** Ensure plastic hole plugs are removed before connecting Antenna units to one another or mounting kits.

## OPTIONAL STACKING

Stack Antenna units and securely connect using (4) 3/8"-16 Hex Head screws in designated 3/8" holes. Ensure use of 3/8" flat washers on both sides and 3/8"-16 Hex lock nuts to securely fasten.



Units may be stacked from either side as mounting holes are identical on both ends.

**Caution:** Ensure plastic hole plugs are removed before connecting units.

**Caution:** Be cautious that stacked units do not separate or topple before properly secured.

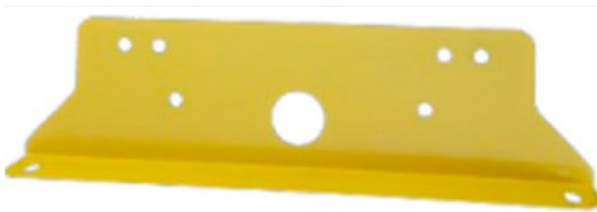
# RPOR SERIES OPTIONAL MOUNTING KITS



U-Bolt Pole Mount



Hanging Chain Mount



Wall & Ceiling Flush Mount



Floor Mount with Leveling

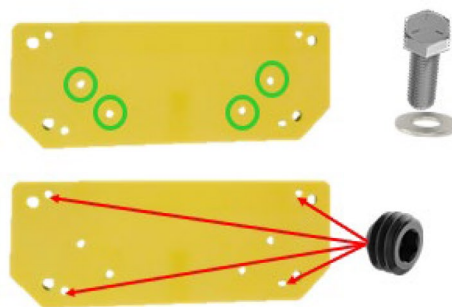


# FLOOR MOUNT KIT

## STEP 1:

Place Antenna units onto floor mount using (4) 3/8"-16 Hex Head screws in designated 3/8" holes. Ensure use of 3/8" flat washers. Install 3/8" set screws into floor mount for leveling.

Units may be stacked from either side as mounting holes are identical on both ends.



**Caution:** Ensure plastic hole plugs are removed from bottom before connecting floor mount.

**Caution:** Only use included 5/8" length 3/8"-16 Hex screws. Flat washer is required to connect floor mount.

**Caution:** Fasten RPOR Antenna to Floor Mount securely to floor with concrete ties or suitable fastener per local regulations.

# POLE MOUNT KIT

## STEP 1:

Attach RPOR Antenna U-Bolt Pole Mount using (4) 3/8"-16 Hex Head screws in designated 3/8" holes. Ensure use of 3/8" flat washers on each side.

Mounts should be attached to both sides of Antenna unit securely with provided locknuts.



**Caution:** Ensure plastic hole plugs are removed before connecting mount.

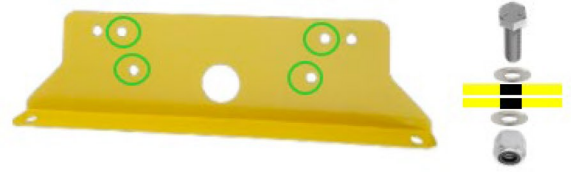


# FLUSH MOUNT KIT

**STEP 1:**

Attach RPOR ANTENNA FLUSH Mount using (4) 3/8"-16 Hex Head screws in designated 3/8" holes. Ensure use of 3/8" flat washers on each side.

Mounts should be attached to both sides of RPOR ANTENNA unit securely with provided locknuts.



**Caution:** Ensure plastic hole plugs are removed before connecting mount.

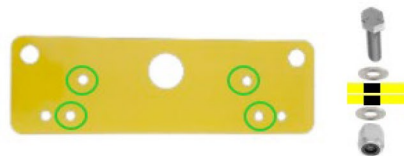
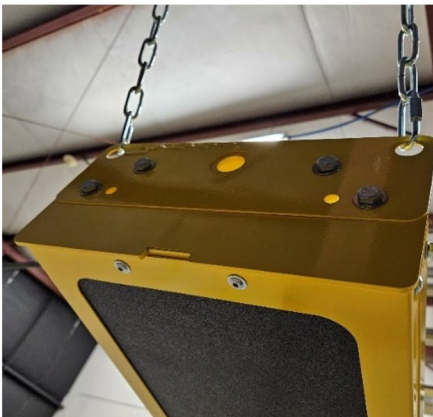
**Caution:** Fasten RPOR ANTENNA Flush Mount securely to wall or ceiling. Follow local regulations for fastener selection and ensure to consider weight of RPOR ANTENNA, cabling, and RFID Reader equipment

# HANG MOUNT KIT

**STEP 1:**

Attach RPOR ANTENNA Hanging Mount using (4) 3/8"-16 Hex Head screws in designated 3/8" holes. Ensure use of 3/8" flat washers on each side.

Mounts should be attached to both sides of RPOR ANTENNA unit securely with provided locknuts.



**Caution:** Ensure plastic hole plugs are removed before connecting mount.

**Caution:** Fasten chains (not included) securely when hanging RPOR ANTENNA. Follow local regulations for chain selection and ensure to consider weight of RPOR ANTENNA, cabling, and RFID Reader equipment.

# DOCK DOOR PORTALS

38" Single Unit  
for use when  
double-stack  
isn't required



76" Stacked  
Configuration for  
use when double-  
stack is required



Hole patterns for  
leading RFID  
readers



Side & Back Panels  
for Easy Access