



EOS-480 M730

T A G E O S

Datasheet



T A G E O S

Superior Read Performance for High-Speed Inventory

EOS-480 M730 RAIN RFID inlay utilizes Impinj M730 chip to enable faster read speeds at longer ranges. Optimized for use on a wide range of materials, it is ideally suited to item-level retail and apparel tagging applications, including boxed electronics, supplychain logistics, inventory management and asset tracking, as well as such sectors as quick service restaurants, returnable transport units (RTUs) and general industrial applications.

The Impinj M730 RAIN RFID chip with its 128-bit EPC memory provides high performance, fast inventory capability, and advanced features for next-generation, universal RAIN RFID tags. It lends itself to solutions that include high-speed inventory counting, loss prevention with frictionless self-checkout, and embedded tagging with seamless product returns.

EOS-480 M730 inlay is ideal for large-scale, global deployments, since it is small, universal tag that can operate worldwide, simplifying the tag supply chain for global enterprises. The product is available in dry, wet format and paper-face format.

Tageos was one of the first companies to qualify for ARC Quality Certification for its manufacturing operations from Auburn University RFID Lab. EOS-480 M730 complies with ARC specification Z.

Like all Tageos' RFID products, EOS-480 M730 complies with ISO 9001:2015 Quality Management System and ISO 14001:2015 Environmental Management System as well as Environmental Directives RoHS and REACH, utilizing sustainable materials such as FSC® certified paper whenever possible.

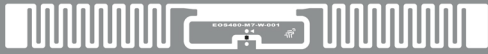
Overview

IC:	Impinj M730
EPC/User Memory:	128 bit / - bit
TID Memory:	96 bit incl. 48 bit unique S/N
Frequency Band:	860 - 960 MHz
Protocol:	EPC Class 1 Gen 2 ISO 18000-63

Application Areas

- Apparel
- Food
- Inventory Visibility
- Item level Tagging
- Logistics
- Parts Management
- Supply Chain Mgmt.





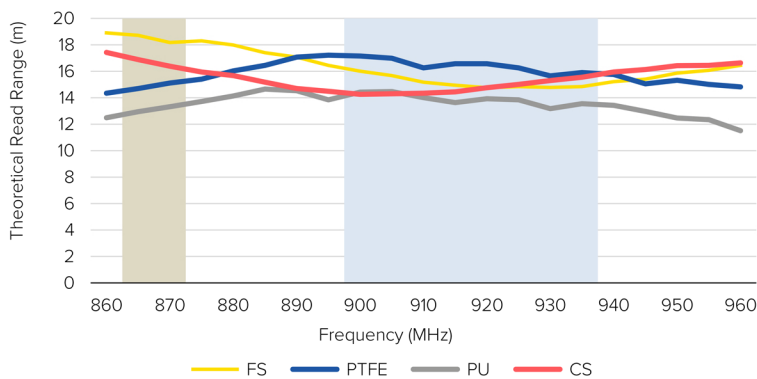
EOS-480 M730

T A G E O S

Technical Overview

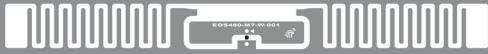
	Dry Inlay	Wet Inlay	Paper-face Inlay
Product Code	4800000002	4800000003	4800000006
Antenna Size	87 x 8 mm 3.43 x 0.31 in	87 x 8 mm 3.43 x 0.31 in	87 x 8 mm 3.43 x 0.31 in
Die-cut Size	-	90 x 12 mm 3.54 x 0.47 in	90 x 12 mm 3.54 x 0.47 in
Web Width	102.0 ± 1 mm 4.016 ± 0.04 in	102.0 ± 1 mm 4.016 ± 0.04 in	102.0 ± 1 mm 4.016 ± 0.04 in
Pitch	15.88 ± 0.2 mm 0.625 ± 0.01 in	15.88 ± 1 mm 0.625 ± 0.04 in	15.88 ± 1 mm 0.625 ± 0.04 in
Antenna Material	Aluminium	Aluminium	Aluminium
Front Face	-	Clear PET	TT Paper
Inlay Substrate	Clear PET	Clear PET	Clear PET
Inlay Adhesive	-	Permanent	Permanent
Liner	-	Paper	Paper
Operating Temperature	-40°C / +85°C -40°F / +185°F	-40°C / +85°C -40°F / +185°F	-40°C / +85°C -40°F / +185°F
Final Inspection	100% tested	100% tested	100% tested
ARC Approvals	Z	Z	Z

Read Range



Graphs: All the graphs are indicative: performance in real life applications may vary. The data has been determined based on calculations for transmitters with a normal output power level and respective IC silicon. **Storage & handling precautions:** Observe standard storage and handling practices to minimize Electro Static Discharge. Tageos reserves the right to change its products and services at any time without notice. As our products are used in circumstances beyond our control, we cannot be held liable for any damages caused through their use. This is a general purpose product not designed or intended for any specific application.

© 2023 Tageos All rights reserved. The pictures and illustrations found on this document are for illustration purposes only, and do not necessarily represent the exact products. Tageos is a registered trademark. All other trademarks are the property of their respective owners. Reproduction in whole or in part is prohibited without the prior written consent of the copyright owner. The information presented in this document does not form part of any quotation or contract, is believed to be accurate and reliable and may be changed without notice. No liability will be accepted by the publisher for any consequence of its use.

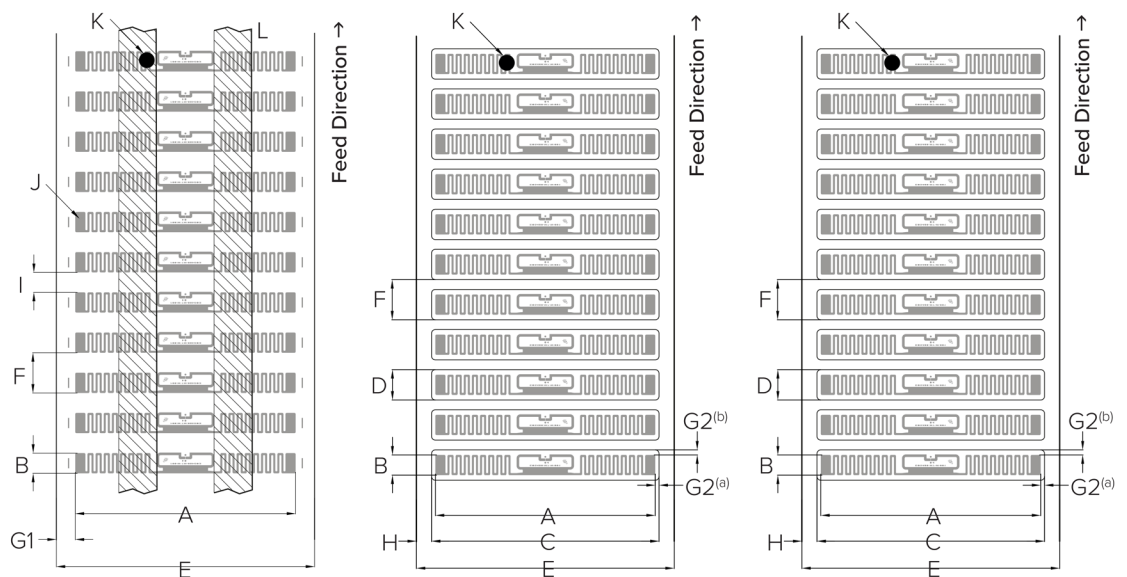


EOS-480 M730

TAGEOS

Product Specifications

Mechanical Dimensions



		Dry Inlay	Wet Inlay	Paper-face Inlay
Product Code		4800000002	4800000003	4800000006
Antenna Size	A x B	87 x 8 mm / 3.43 x 0.31 in	87 x 8 mm / 3.43 x 0.31 in	87 x 8 mm / 3.43 x 0.31 in
Finish Size	C x D	-	90 x 12 mm / 3.54 x 0.47 in	90 x 12 mm / 3.54 x 0.47 in
Web Width	E	102.0 ± 1 mm / 4.016 ± 0.04 in	102.0 ± 1 mm / 4.016 ± 0.04 in	102.0 ± 1 mm / 4.016 ± 0.04 in
Pitch	F	15.88 ± 0.2 mm / 0.625 ± 0.01 in	15.88 ± 1 mm / 0.625 ± 0.04 in	15.88 ± 1 mm / 0.625 ± 0.04 in
Antenna to Web Edge	G1	7.5 ± 1 mm / 0.295 ± 0.04 in	-	-
Antenna to Die-cut	G2	-	1.5 ± 1 mm / 0.059 ± 0.04 in ^(a)	1.5 ± 1 mm / 0.059 ± 0.04 in ^(a)
			2.0 ± 1 mm / 0.079 ± 0.04 in ^(b)	2.0 ± 1 mm / 0.079 ± 0.04 in ^(b)
Die-cut to Web Edge	H	-	6.0 ± 1 mm / 0.236 ± 0.04 in	6.0 ± 1 mm / 0.236 ± 0.04 in
Antenna Gap	I	7.90 mm / 0.311 in	-	-
Converting Spot	J	3.99 x 8.0 mm / 0.157 x 0.315 in, antenna can be used		
Bad Mark	K	Ø 6 mm / 0.236 in	Ø 6 mm / 0.236 in	Ø 6 mm / 0.236 in
Interleaves	L	Yes	No	No



EOS-480 M730

TAGEOS

Packing Details

	Dry Inlay	Wet Inlay	Paper-face Inlay
Product Code	4800000002	4800000003	4800000006
Delivery Format	Roll (single row)	Roll (single row)	Roll (single row)
Core Inner Diameter	76 mm / 2.99 in	76 mm / 2.99 in	76 mm / 2.99 in
Roll Outer Diameter	279 mm / 10.98 in	339 mm / 13.35 in	199 mm / 7.83 in
Unwinding Direction	Label on outside of roll	Label on outside of roll	Label on outside of roll
Standard Roll Size	35 000	31 000	6 500
Minimum Guar. Yield/Roll	98.5%	98.5%	98.5%
Box Dimensions	39.5 x 39.0 x 17.0 cm / 15.56 x 15.35 x 6.69 in	39.5 x 39.0 x 17.0 cm / 15.56 x 15.35 x 6.69 in	26.0 x 26.0 x 37.0 cm / 10.24 x 10.24 x 14.57 in
Roll/Box	1	1	3
Inlays/Box	35 000	31 000	19 500
Box Gross Weight	5.97 kg / 13.16 lbs	8.94 kg / 19.71 lbs	7.69 kg / 16.95 lbs
Pallet Dimensions	120 x 80 x 151 cm / 47.2 x 31.5 x 59.4 in	120 x 80 x 151 cm / 47.2 x 31.5 x 59.4 in	120 x 80 x 126 cm / 47.2 x 31.5 x 49.6 in
Boxes/Pallet	48	48	36
Inlays/Pallet	1 680 000	1 488 000	702 000
Pallet Gross Weight	312 kg / 689 lbs	454 kg / 1001 lbs	302 kg / 666 lbs

