



EOS-940 SLIX2

TAGEOS

Datasheet

High Performance and Versatility for Media Management and More

The EOS-940 SLIX2 HF inlay combines excellent performance and extended user memory with exceptional versatility for use in a wide range of applications such as, but not limited to, library and media management.

The inlay's compact footprint and square shape suit the needs of all types of media libraries as well as the automotive, healthcare, industrial manufacturing and logistics industries.

EOS-940 SLIX2 uses the newest member of NXP's SLIX product family, the ICODE SLIX2 IC. The chip offers full backward compatibility to SLIX, extended user memory size (2.5 kbit), and outstanding characteristics such as NXP originality signature, overall increased performance, and flexible user memory segmentation with separate access.



TAGEOS

The EOS-940 SLIX2 inlay is available in dry, wet, paper-face and plastic-face formats.

Tageos was one of the first companies to qualify for ARC Quality Certification for its manufacturing operations from Auburn University RFID Lab.

Like all Tageos' RFID products, EOS-940 SLIX2 complies with ISO 9001:2015 Quality Management System and ISO 14001:2015 Environmental Management System as well as Environmental Directives RoHS and REACH, utilizing sustainable materials such as FSC® certified paper whenever possible.

Overview

IC:	NXP ICODE SLIX2
User Memory:	2560 bit
UID:	64 bit
Frequency Band:	13.56 MHz
Protocol:	ISO/IEC 15693 (Vicinity) / Type 5 Tag

Application Areas

- Brand Protection
- Food & Beverage
- Library & Media Management
- Product Authentication
- Supply Chain Management



EOS-940 SLIX2

TAGEOS

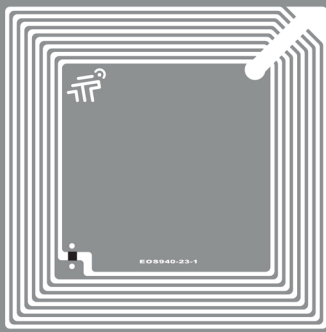
Technical Overview

	Dry	Wet	Paper-face	Plastic-face
Product Code	9400000001	9400000002	9400000004	9400000003
Antenna Size	47 x 47 mm 1.85 x 1.85 in	47 x 47 mm 1.85 x 1.85 in	47 x 47 mm 1.85 x 1.85 in	47 x 47 mm 1.85 x 1.85 in
Finish Size	- -	50 x 50 mm 1.97 x 1.97 in	50 x 50 mm 1.97 x 1.97 in	50 x 50 mm 1.97 x 1.97 in
Web Width	54.0 ± 1 mm 2.126 ± 0.04 in	54.0 ± 1 mm 2.126 ± 0.04 in	54.0 ± 1 mm 2.126 ± 0.04 in	54.0 ± 1 mm 2.126 ± 0.04 in
Pitch	53.98 ± 0.2 mm 2.125 ± 0.01 in	53.98 ± 1 mm 2.125 ± 0.04 in	53.98 ± 1 mm 2.125 ± 0.04 in	53.98 ± 1 mm 2.125 ± 0.04 in
Antenna Material	Aluminium	Aluminium	Aluminium	Aluminium
Front Face	-	PET Clear	Paper TT	PP White
Inlay Substrate	PET Clear	PET Clear	PET Clear	PET Clear
Inlay Adhesive	-	Permanent	Permanent	Permanent
Liner	-	Paper	Paper	Paper
Operating Temperature	-40°C / +85°C -40°F / +185°F	-40°C / +85°C -40°F / +185°F	-40°C / +85°C -40°F / +185°F	-40°C / +85°C -40°F / +185°F
Final Inspection	100% tested	100% tested	100% tested	100% tested



Graphs: All the graphs are indicative; performance in real life applications may vary. The data has been determined based on calculations for transmitters with a normal output power level and respective IC silicon. **Storage & handling precautions:** Observe standard storage and handling practices to minimize Electro Static Discharge. Tageos reserves the right to change its products and services at any time without notice. As our products are used in circumstances beyond our control, we cannot be held liable for any damages caused through their use. This is a general purpose product not designed or intended for any specific application.

© 2023 Tageos All rights reserved. The pictures and illustrations found on this document are for illustration purposes only, and do not necessarily represent the exact products. Tageos is a registered trademark. All other trademarks are the property of their respective owners. Reproduction in whole or in part is prohibited without the prior written consent of the copyright owner. The information presented in this document does not form part of any quotation or contract, is believed to be accurate and reliable and may be changed without notice. No liability will be accepted by the publisher for any consequence of its use.

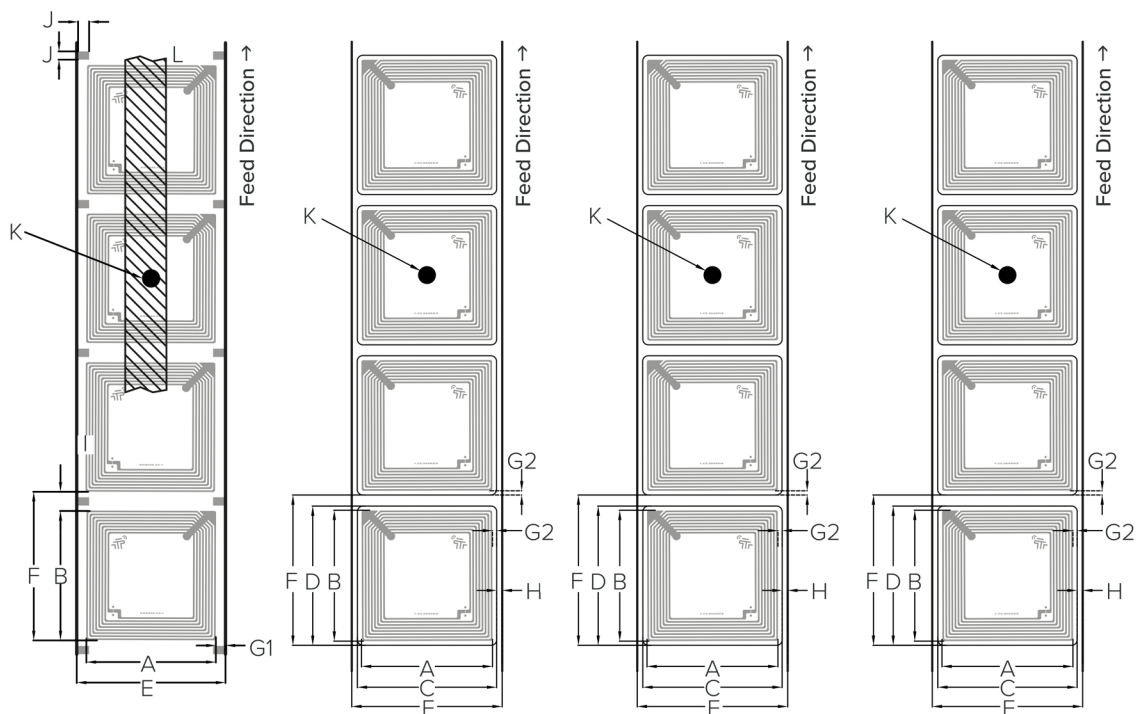


EOS-940 SLIX2

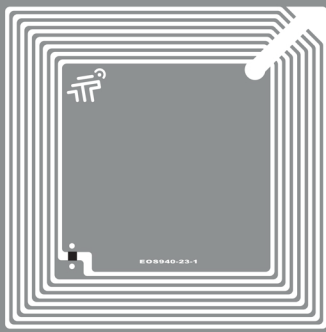
TAGEOS

Product Specifications

Mechanical Dimensions



mm / in		Dry	Wet	Paper-face	Plastic-face
Product Code		9400000001	9400000002	9400000004	9400000003
Antenna Size	A x B	47 x 47 / 1.85 x 1.85	47 x 47 / 1.85 x 1.85	47 x 47 / 1.85 x 1.85	47 x 47 / 1.85 x 1.85
Finish Size	C x D	-	50 x 50 / 1.97 x 1.97	50 x 50 / 1.97 x 1.97	50 x 50 / 1.97 x 1.97
Web Width	E	54.0 ± 1 / 2.126 ± 0.04	54.0 ± 1 / 2.126 ± 0.04	54.0 ± 1 / 2.126 ± 0.04	54.0 ± 1 / 2.126 ± 0.04
Pitch	F	53.98 ± 0.2 / 2.125 ± 0.01	53.98 ± 1 / 2.125 ± 0.04	53.98 ± 1 / 2.125 ± 0.04	53.98 ± 1 / 2.125 ± 0.04
Antenna to Web Edge	G1	3.5 ± 1 / 0.138 ± 0.04	-	-	-
Antenna to Die-cut	G2	-	1.5 ± 1 / 0.059 ± 0.04	1.5 ± 1 / 0.059 ± 0.04	1.5 ± 1 / 0.059 ± 0.04
Die-Cut to Web Edge - H	-	-	2.0 ± 1 / 0.079 ± 0.04	2.0 ± 1 / 0.079 ± 0.04	2.0 ± 1 / 0.079 ± 0.04
Antenna Gap	I	6.98 / 0.275	-	-	-
Converting Spot	J	4.00 x 3.00 / 0.157 x 0.118	-	-	-
Bad Mark	K	Ø 6.0 mm / 0.236 in	Ø 6.0 mm / 0.236 in	Ø 6.0 mm / 0.236 in	Ø 6.0 mm / 0.236 in
Interleave	L	Yes	No	No	No
Registration Mark	M	No	No	No	No



EOS-940 SLIX2

TAGEOS

Packing Details

	Dry	Wet	Paper-face	Plastic-face
Product Code	9400000001	9400000002	9400000004	9400000003
Delivery Forma	Roll (single row)	Roll (single row)	Roll (single row)	Roll (single row)
Core Inner Diameter	76 mm / 2.99 in	76 mm / 2.99 in	76 mm / 2.99 in	76 mm / 2.99 in
Roll Outer Diameter	331 mm / 13.03 in	331 mm / 13.03 in	207 mm / 8.15 in	199 mm / 7.83 in
Unwinding Direction	Inlay on outside of roll	Inlay on outside of roll	Inlay on outside of roll	Inlay on outside of roll
Standard Roll Size	13 000	8 000	2 000	2 000
Min. Guar. Yield/Roll	98.5%	98.5%	98.5%	98.5%
Box Dimensions	39.5 x 39.0 x 17.0 cm / 15.56 x 15.35 x 6.69 in	39.5 x 39.0 x 17.0 cm / 15.56 x 15.35 x 6.69 in	26.0 x 26.0 x 37.0 cm / 10.24 x 10.24 x 14.57 in	26.0 x 26.0 x 37.0 cm / 10.24 x 10.24 x 14.57 in
Roll/Box	2	2	6	6
Inlay/Box	26 000	16 000	12 000	12 000
Box Gross Weight	8.52 kg / 18.78 lbs	8.40 kg / 18.52 lbs	8.48 kg / 18.70 lbs	8.06 kg / 17.77 lbs
Pallet Dimensions	120 x 80 x 151 cm/ 47.2 x 31.5 x 59.4 in	120 x 80 x 151 cm / 47.2 x 31.5 x 59.4 in	120 x 80 x 126 cm / 47.2 x 31.5 x 49.6 in	120 x 80 x 126 cm / 47.2 x 31.5 x 49.6 in
Boxes/Pallet	48	48	36	36
Inlay/Pallet	1 248 000	768 000	432 000	432 000
Pallet Gross Weight	434 kg / 844 lbs	428 kg / 833 lbs	330 kg / 728 lbs	315 kg / 695 lbs

