

eGo® Plus

Headlamp Sticker Tag

Installation Instructions

General Information

These instructions describe how to install the eGo® Plus Headlamp Sticker Tag correctly and permanently.

The eGo Plus Headlamp Sticker Tag is a beam-powered radio frequency identification (RFID) tag specifically designed for exterior application to a vehicle's headlamp. It supports Super eGo (SeGo) and American Trucking Associations (ATA) protocols.

Required Supplies

- eGo Plus Headlamp Sticker Tag
- Commercial glass cleaner and paper towels

Choose a Location for Your Tag

When properly installed, this tag is designed to not interfere with the headlamp beam. The semi-permanent adhesive can withstand a variety of environmental conditions including regular car washing, UV exposure, vibration, windblown sand, and temperature and humidity variations.

Note: due to a wide variance of vehicle headlamp designs, these instructions are intended as a general guide. Tesla owners should contact the customer service center before placing this tag on their vehicle.

1. Determine where you will mount the tag. The tag should be positioned horizontally as shown in [Figure 1](#).

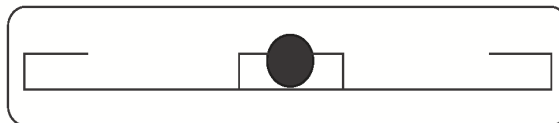


Figure 1 – eGo Plus Headlamp Sticker Tag

2. The tag must be at least 2 in (5.1 cm) away from any materials containing metal and approximately 3.5 in (8.9 cm) from the bottom reflector ([Figure 2](#)).

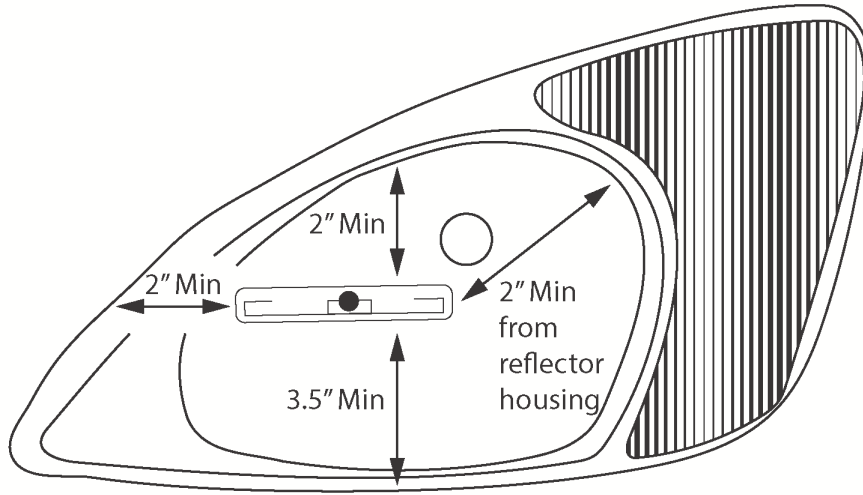


Figure 2 – Placement of tag on headlamp

Install the Tag

For best results, install the tag when the temperature of the mounting surface is above 50°F (10°C).

Note: Once the tag is installed, it cannot be repositioned or moved.

1. Clean and dry the area where the tag will be installed using commercial cleaning solution and paper towels.
2. Carefully peel the upper part of the tag from the liner, taking care to handle the tag by the edges and to avoid touching the side with adhesive. Do not bend or distort the tag as you remove it from the liner.

Note: Only the upper part of the tag should be mounted to the headlamp. The lower part with the barcode should remain on the liner (Figure 3).

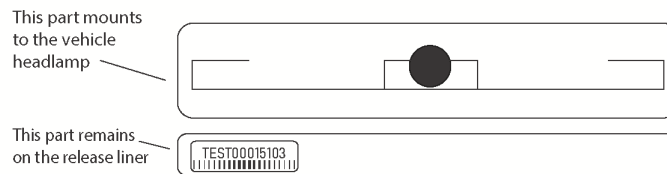


Figure 3 – Remove tag from liner

3. Handling the tag by the edges, install it at the selected location (**Figure 4**).

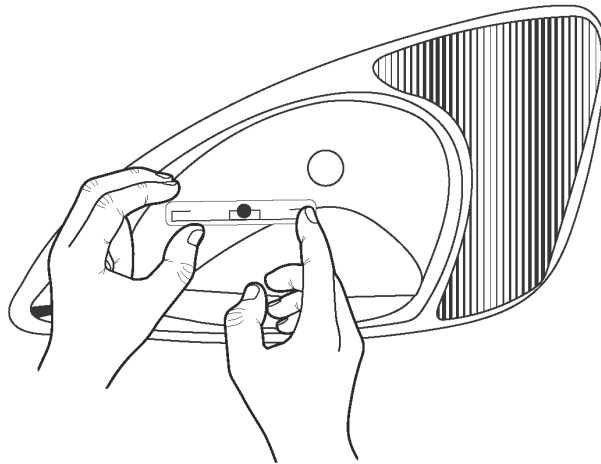
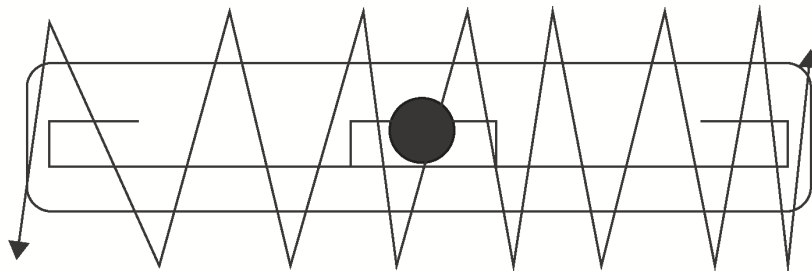


Figure 4 – Install tag on headlamp

4. Smooth the tag to ensure complete adhesion and remove any air pockets. The tag is ready for immediate use (**Figure 5**).

Note: Allow 72 hours after application before washing the vehicle to allow the adhesive to cure.



TA-0507

Figure 5 – Smooth tag to bond adhesive to surface



TRANSCORE
Trusted Transportation Solutions

© 2020 TransCore LP. All rights reserved. TRANSCORE is a registered trademark and is used under license. All other trademarks listed are the property of their respective owners. Contents subject to change. Printed in the U.S.A.

16-0163-002 Rev A 08/2020

1 (888) 238-1155 Inside USA • 1 (205) 383-2244 Outside USA
info@atlasRFIDstore.com • www.atlasRFIDstore.com

 atlasRFIDstore.com

