



4 x 2" & 4 x 6" RFID LABELS FOR ZEBRA ZT411/ZT421 PRINTERS

These blank Vulcan RFID™ Paper Labels are manufactured to ensure optimum performance in the Zebra ZT411/ZT421 RFID Printers.

These labels are specifically designed for customers that are in need of blank labels for "at home" printing. All labels are supplied with a top performing IC.

These labels support 3 inch core printing and are offered in a 4 x 2 in and a 4 x 6 in size. These labels meet EPCglobal Gen2 and ISO/IEC 18000-6C standards.

These labels are ideal for a variety of applications including but limited to:

- Corrugated Cases
- Pallet Placard Labels
- Cardboard Boxes
- Asset Management





Specifications

ELECTRICAL	Operating Frequency:	Global (860-960 MHz)
	Air Interface Protocol:	ISO-18000-6C, EPC Class 1, Gen 2
	*IC Type:	Impinj Monza R6-P or M730
	Memory:	Monza R6-P: EPC 128/96 Bits, User 32/64 Bits, TID 48 Bits M730: EPC 128 bits, User 0 Bits, TID 96 bits
	EPC Memory Content:	Unique, Randomized Number
	Max Read Distance:	Testing Recommended
	Applicable Surface Materials:	Wood, Plastic, Glass, Cardboard

*IC used is subject to variation based on availability

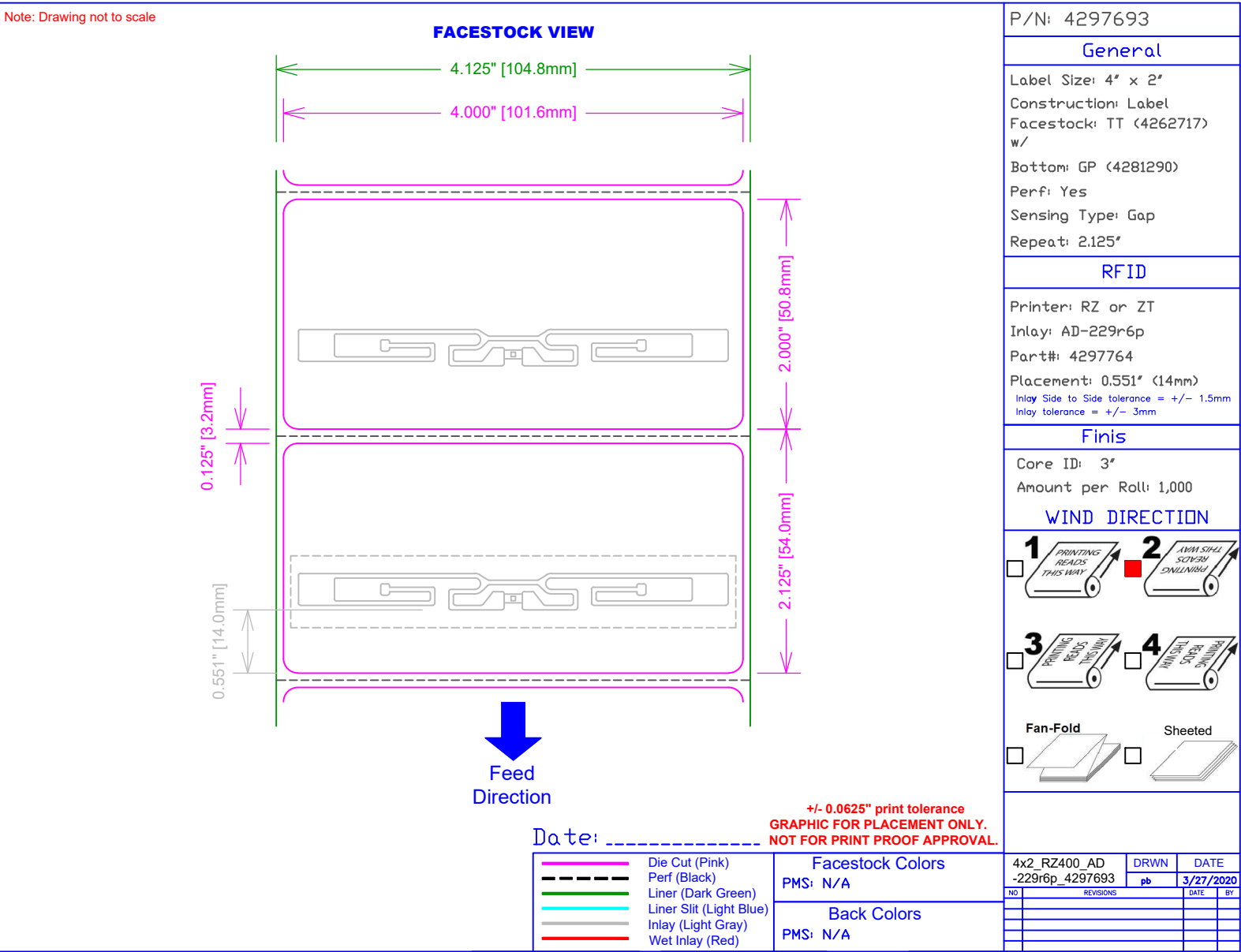
MECHANICAL	Tag Form Factor:	Label Tag, Perforated
	Tag Materials:	Printable White Paper (Thermal Transfer)
	Recommended Ribbon:	Wax-Resin
	Attachment Method:	General Purpose Permanent Adhesive
	Dimensions:	101.6 x 50.8 mm (4 x 2 in) 101.6 x 152.4 mm (4 x 6 in)
	Weight:	10 g (0.02 lbs)
	Sensing Type:	Gap
	Core ID:	3 in
	Quantity per Roll:	(4 x 2 in): 1,000 Labels (4 x 6 in): 500 Labels
	Repeat:	(4 x 2 in): 2.125 in (4 x 6 in): 6.125 in
	RFID Placement:	AD-229r6p: 14 mm (0.551 in) Impinj M730: 18 mm (0.709 in)
	Print Tolerance:	± 0.0625 in
	Inlay Side to Side Tolerance:	± 1.5 mm (0.059 in)
	Inlay Tolerance:	± 3 mm (0.118 in)

ENVIRONMENT	Operating Temperature:	-40° to +85°C (-40° to +185°F)



Diagrams

Dimensions (mm)

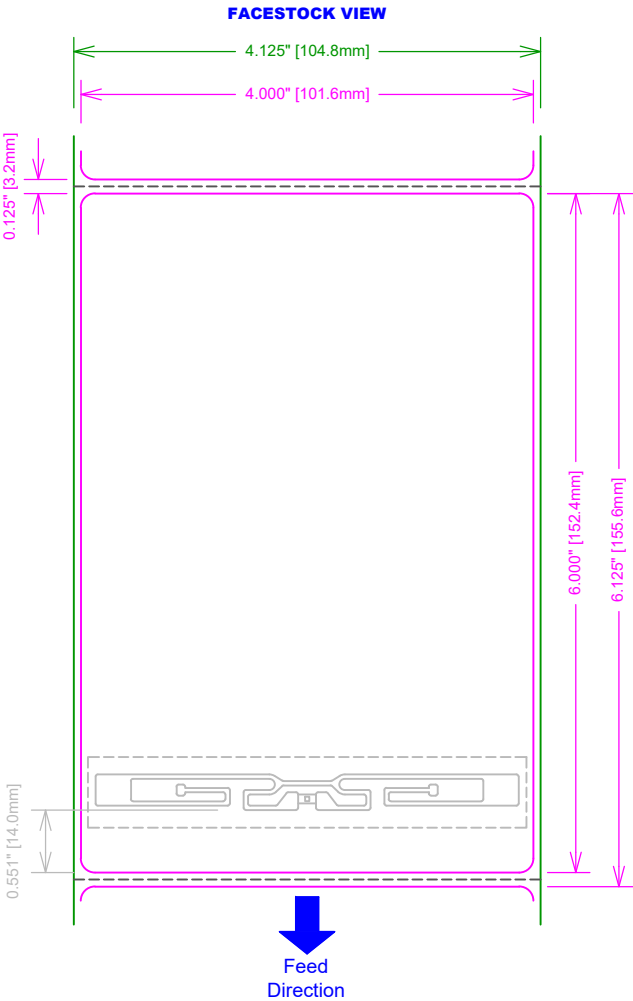




Diagrams

Dimensions (mm)

Note: Drawing not to scale



Date: _____

+/- 0.0625" print tolerance
GRAPHIC FOR PLACEMENT ONLY.
NOT FOR PRINT PROOF APPROVAL.

	Die Cut (Pink)
	Perf (Black)
	Liner (Dark Green)
	Liner Slit (Light Blue)
	Inlay (Light Gray)
	Wet Inlay (Red)

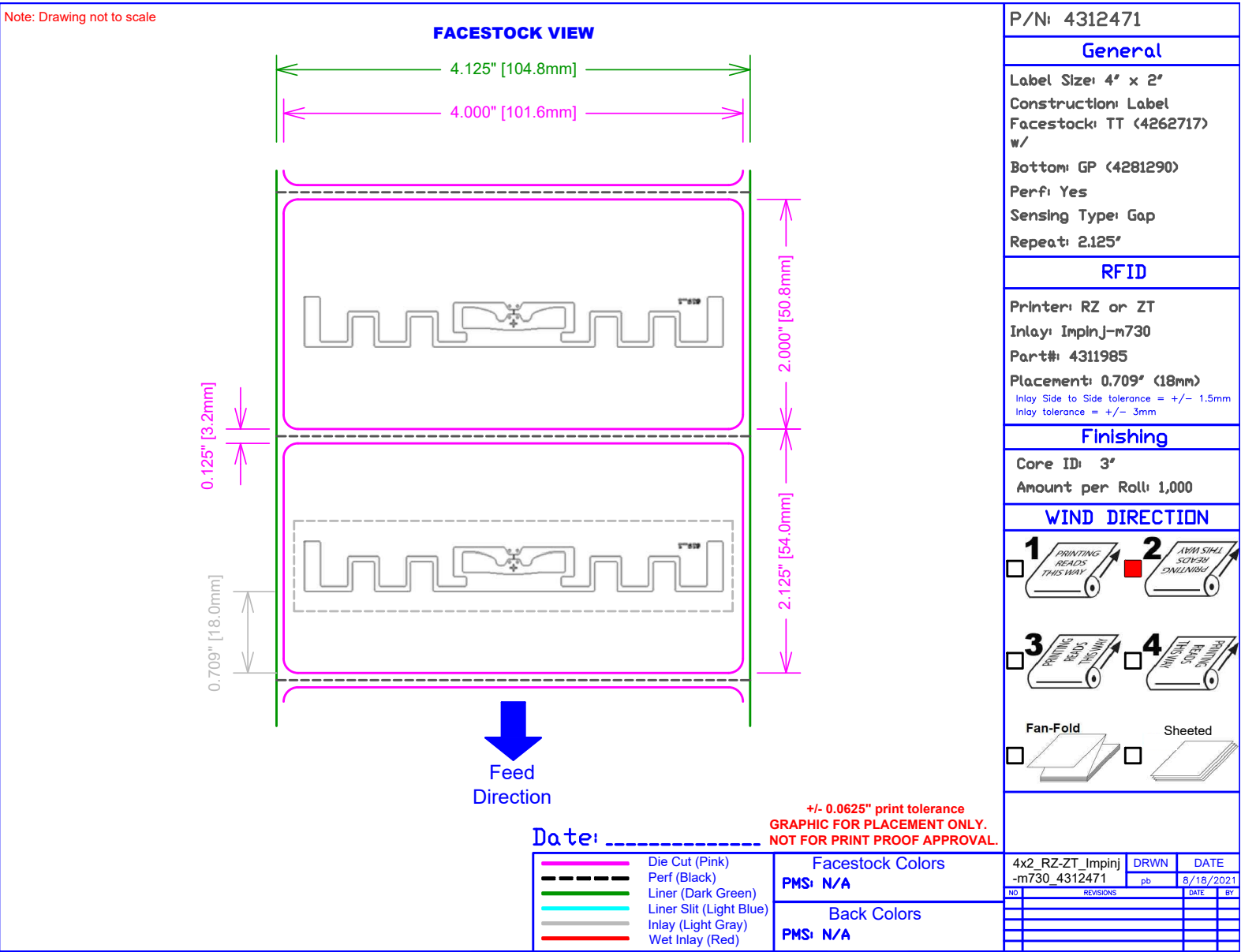
Facestock Colors
PMS: N/A
Back Colors
PMS: N/A

P/N: 4297695
General
Label Size: 4" x 6"
Construction: Label
Facestock: TT paper (4262717) w/
Bottom: GP Adhesive (4281290)
Perf: Yes
Sensing Type: Gap
Repeat: 6.125"
RFID
Printer: RZ or ZT
Inlay: AD-229r6p
Part#: 4297764
Placement: 0.551" (14mm)
Inlay Side to Side tolerance = +/- 1.5mm
Inlay tolerance = +/- 3mm
Finishing
Core ID: 3"
Amount per Roll: 500
WIND DIRECTION
<input type="checkbox"/> 1
<input type="checkbox"/> 2
<input type="checkbox"/> 3
<input type="checkbox"/> 4
<input type="checkbox"/> Fan-Fold
<input type="checkbox"/> Sheeted
4x6 RZ400_AD
-229r6p_4297695
DRWN
DATE
pb
3/27/2020
NO
REVISIONS
DATE
BY



Diagrams

Dimensions (mm)



Dimensions (mm)

+/- 0.0625" print tolerance
GRAPHIC FOR PLACEMENT ONLY.
NOT FOR PRINT PROOF APPROVAL.

	Die Cut (Pink)
	Perf (Black)
	Liner (Dark Green)
	Liner Slit (Light Blue)
	Inlay (Light Gray)
	Wet Inlay (Red)

Facestock Colors
PMS: N/A
Back Colors
PMS: N/A

[illegible]

Accessories & Compatible Products

Zebra



ZT41142-T0100A0Z
ZT41143-T0100A0Z
ZT41142-T5100A0Z
ZT41143-T5100A0Z

Zebra



ZT42162-T0100A0Z
ZT42163-T0100A0Z



About Vulcan RFID™ Products

Vulcan RFID™ offers a broad range of innovative RFID antennas, RFID inlays, custom RFID tags, and accessories suited for a wide variety of industries and applications. With an extensive portfolio, Vulcan RFID™ products are manufactured to withstand environments ranging from mild to extreme. All Vulcan RFID™ products are thoroughly tested and built on a name you can trust. Vulcan RFID™ products enable you to reach and sustain high levels of performance with your UHF or NFC frequency application.



Vulcan RFID™ Antennas

Vulcan RFID™ offers an extensive collection of UHF RFID antennas designed to maximize the RF performance and coverage area of an RFID system.

[Shop Now](#)


Vulcan RFID™ Tags & Inlays

Vulcan RFID™ offers a broad range of RFID labels, tags and inlays built to withstand environments ranging from mild to extreme.

[Shop Now](#)


Vulcan RFID™ Accessories

Vulcan RFID™ provides a variety of high-quality accessories, RF hardware, and cables.

[Shop Now](#)


atlasRFIDstore

Inside USA
1 (888) 238-1155

Outside USA
1 (205) 383-2244

info@atlasRFIDstore.com
www.atlasRFIDstore.com