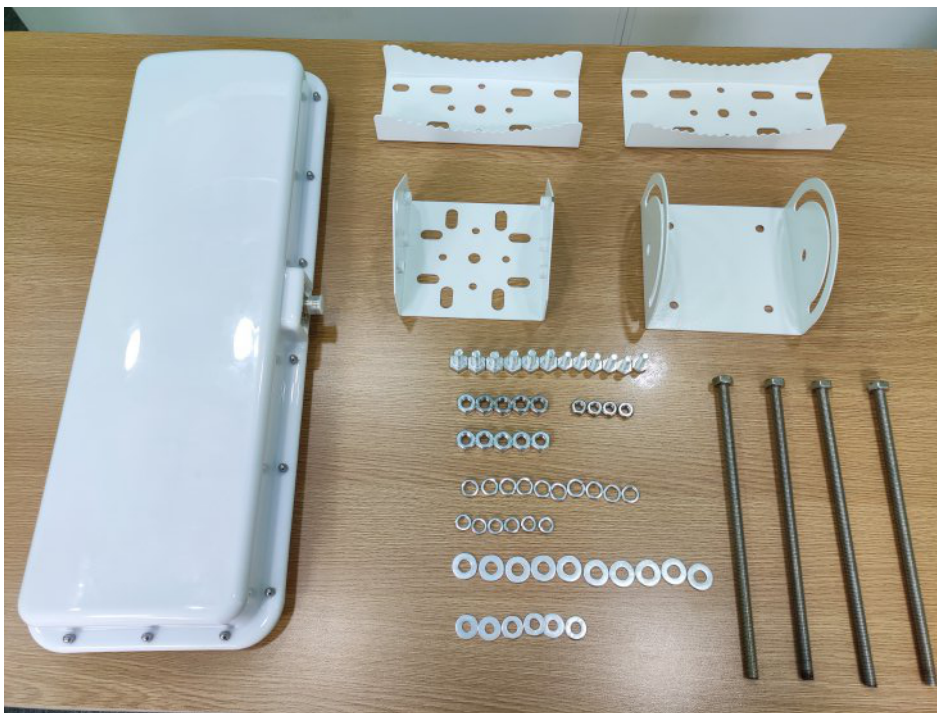


INSTALLATION GUIDE

FOR VULCAN RFID™ LINE12 MOUNTING BRACKET

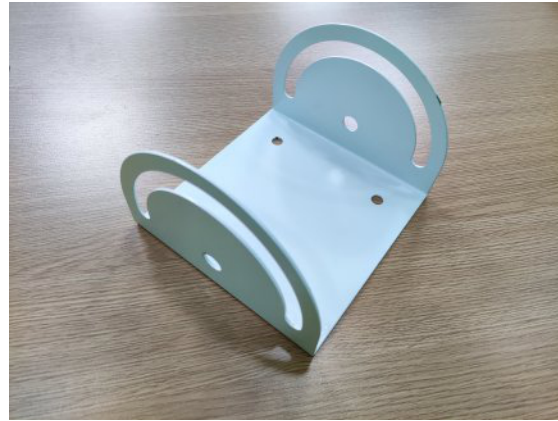
Bracket Accessories Introduction

The Vulcan RFID™ LINE12 Mounting Bracket has eight (8) total accessories.



Bracket Accessories Introduction

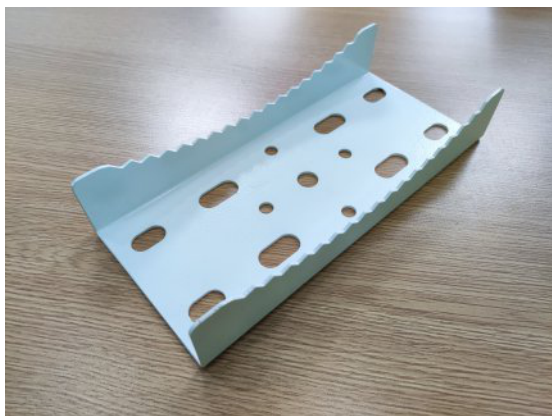
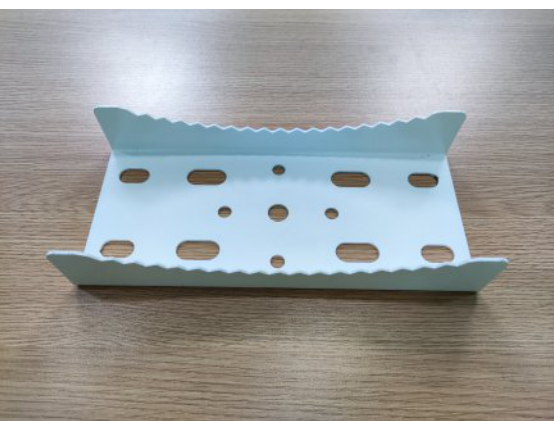
1. Bracket part one: 1pc



2. Bracket part two: 1pc



3. Dogtooth fixture: 2pcs





4. M8 and M10 nut: M8 4pcs(The M8 nut is placed in the carton of the antenna); M10 10pcs



5. M8 and M10 Spring Washer: M8 4pcs(The M8 nut is placed in the carton of the antenna); M10 10pcs



6. M8 and M10 Flat Washer: M8 4pcs(The M8 nut is placed in the carton of the antenna); M10 10pcs



7. M8 and M10 Screw: M8 4pcs(The M8 nut is placed in the carton of the antenna); M10 10pcs



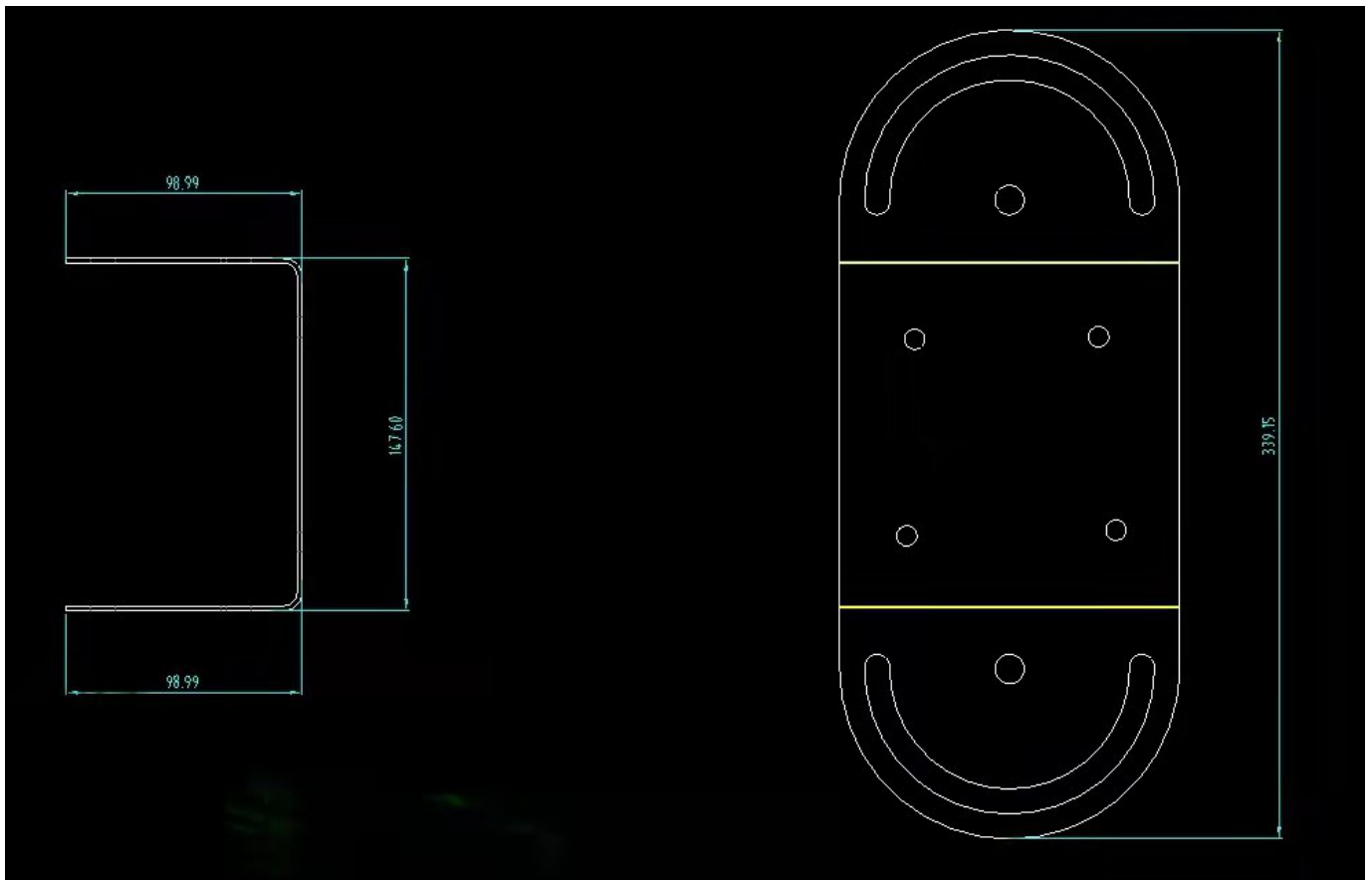
8. Screw: 4pcs





Bracket drawings

1. Bracket part one:

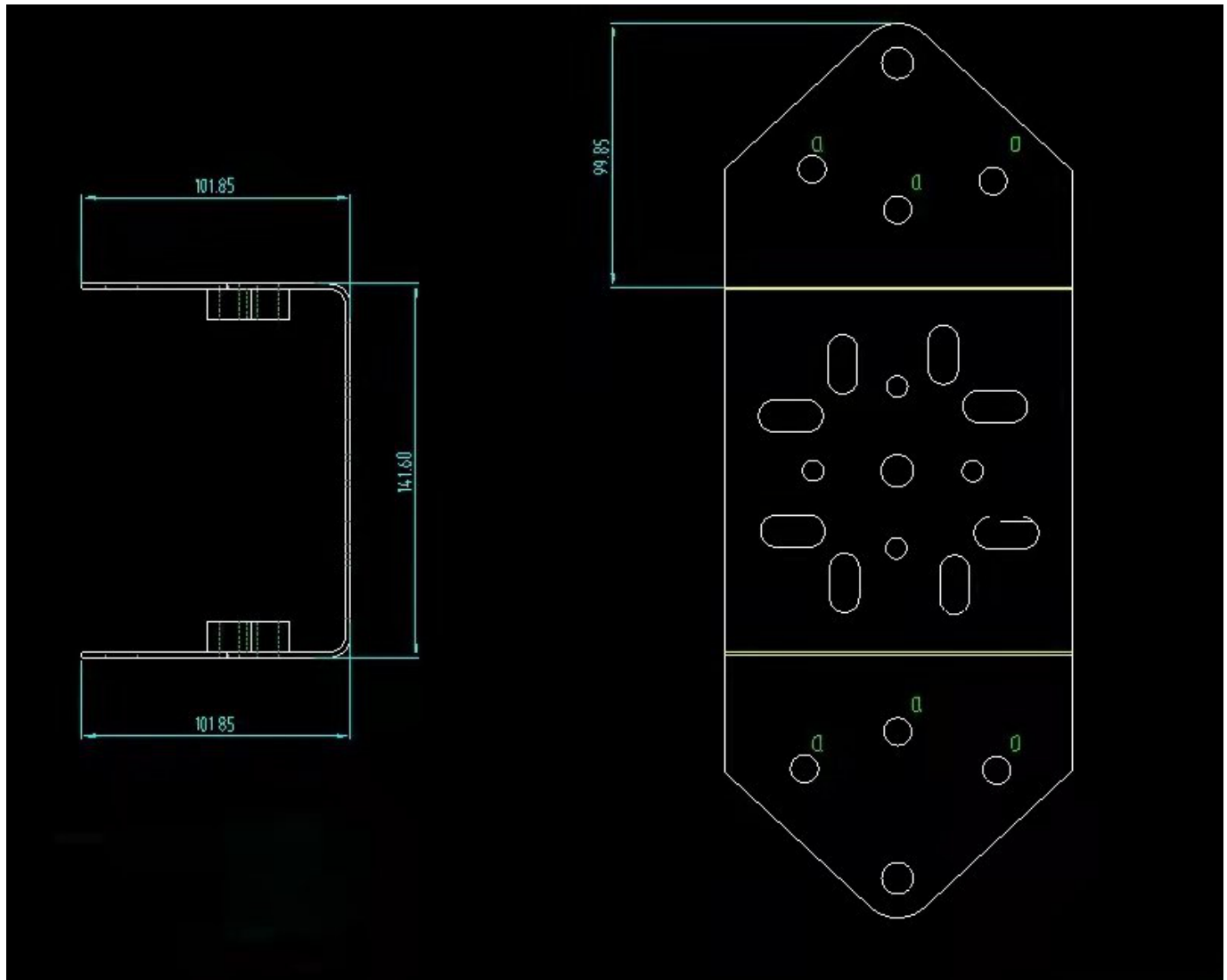


Size: 98.99mm*147.6mm

Size: 339.15mm

Bracket drawings

2. Bracket part two:

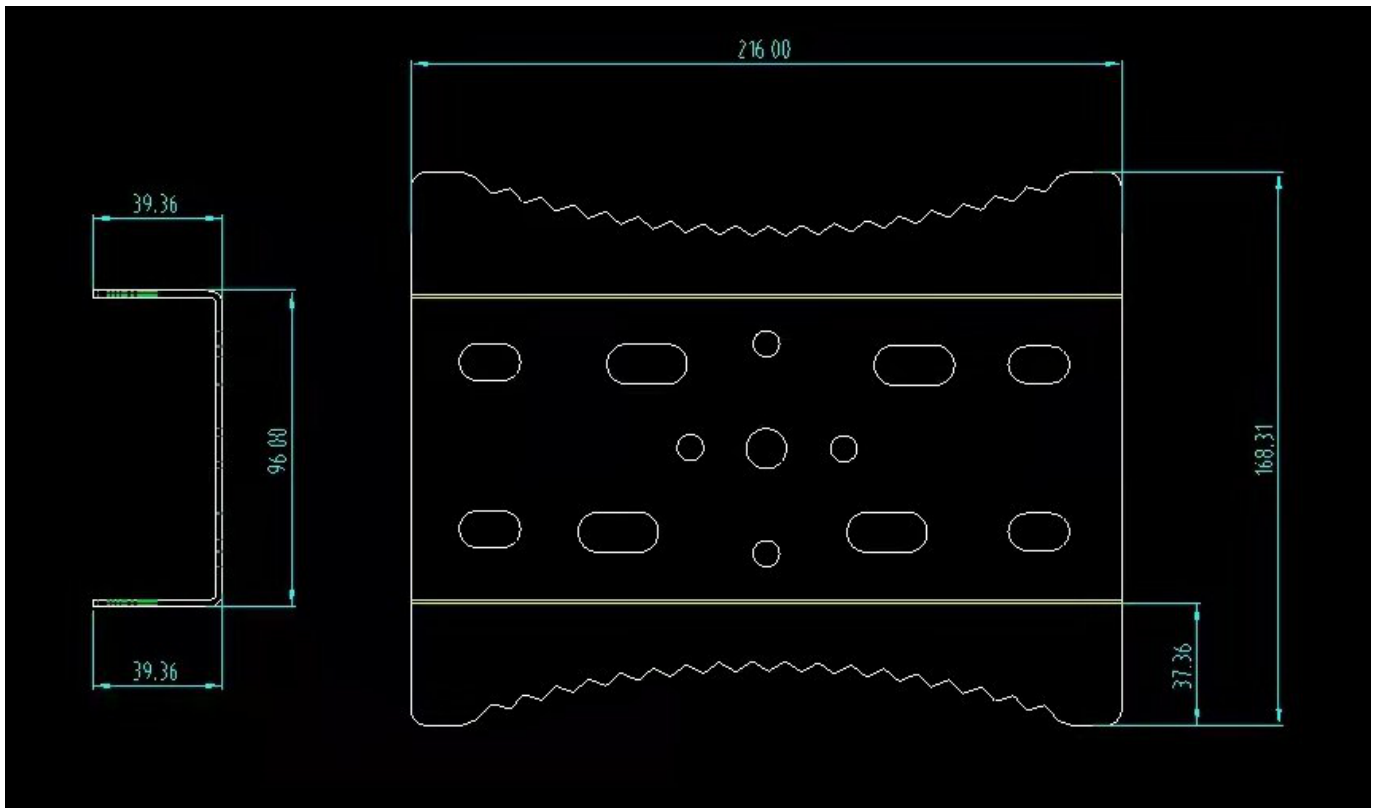


Size: 101.85mm*141.6mm

Size: 99.85mm

Bracket drawings

3. Dogtooth fixture:



Size: 39.36mm*96mm

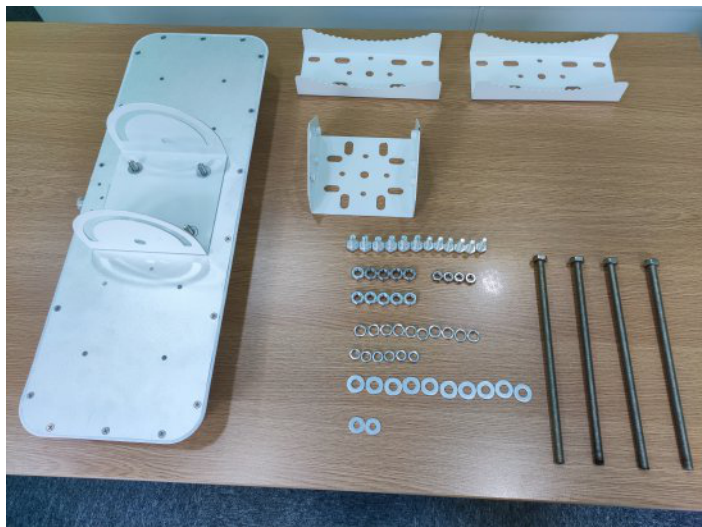
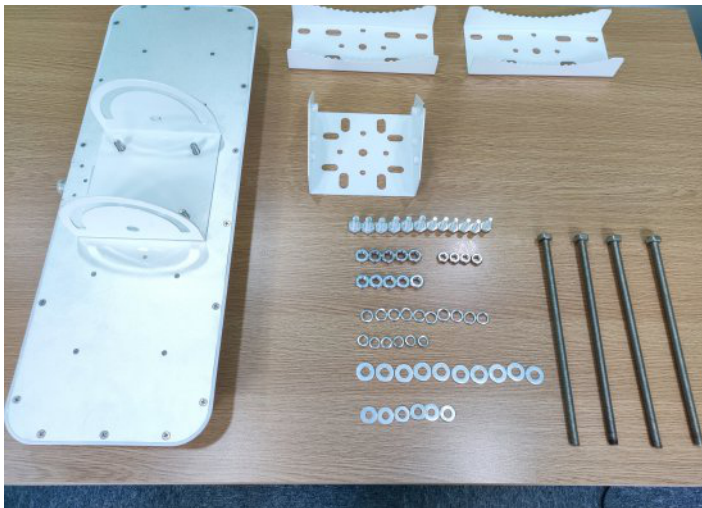
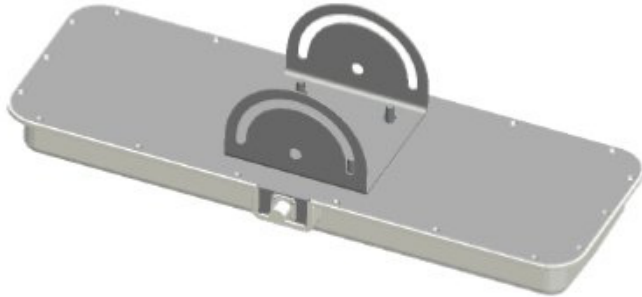
Size: 37.36mm*168.31mm*216mm

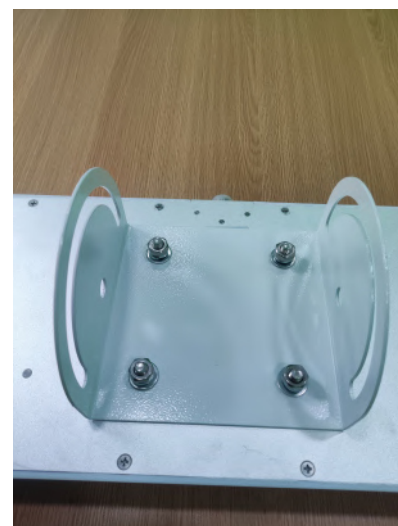
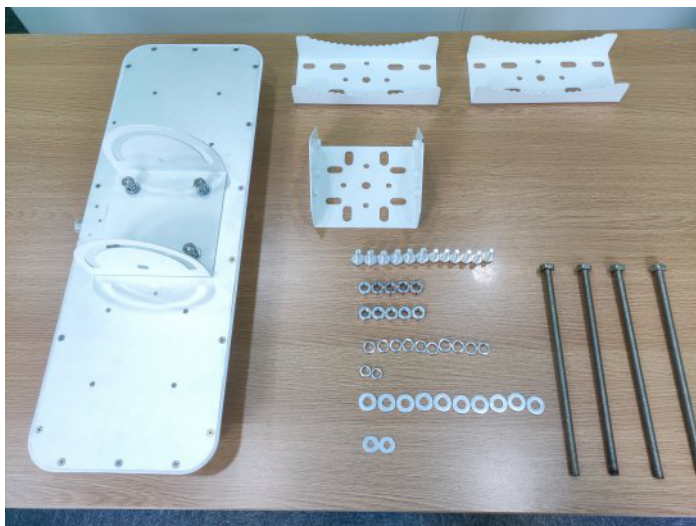
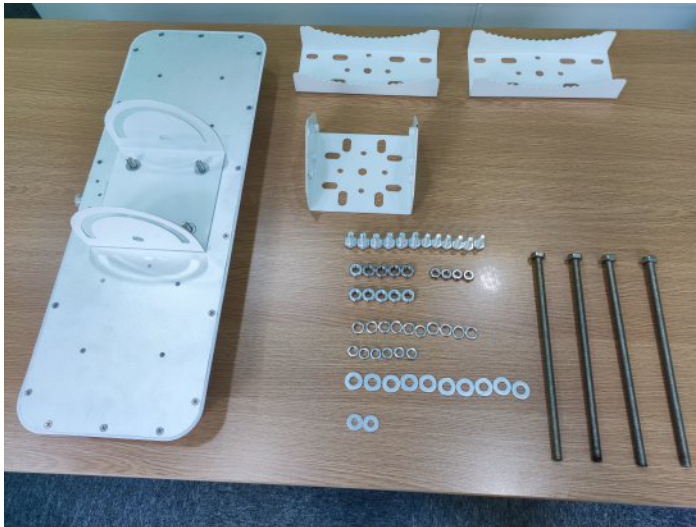
4. Screw:



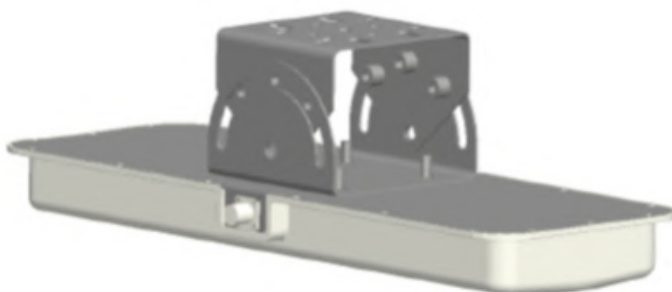
Size: 250mm* ϕ 10mm

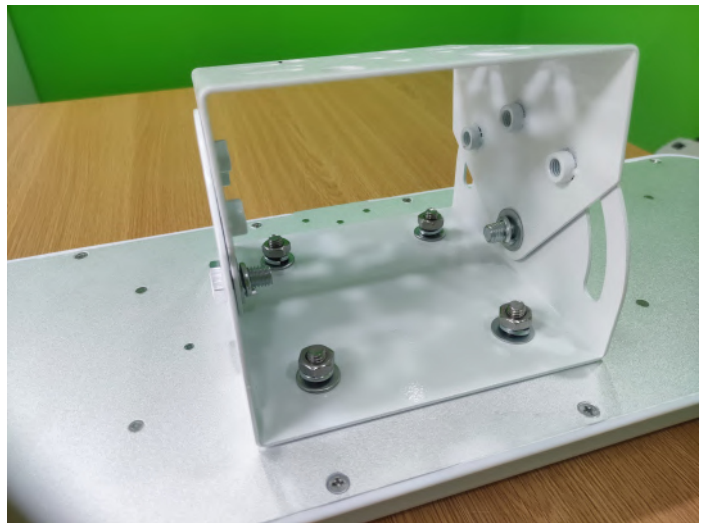
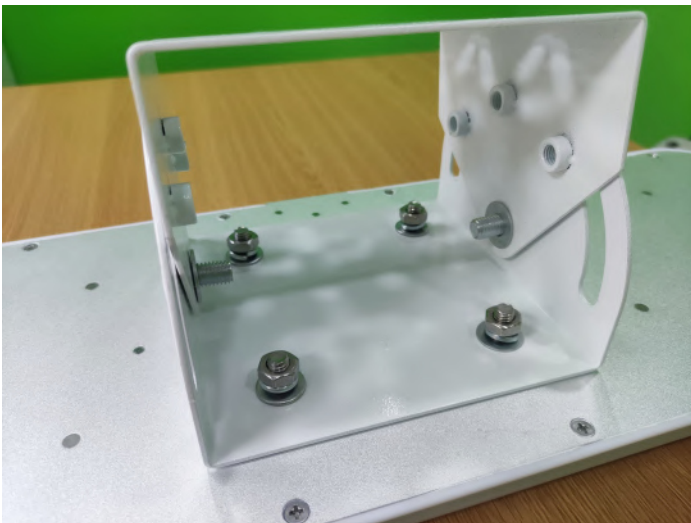
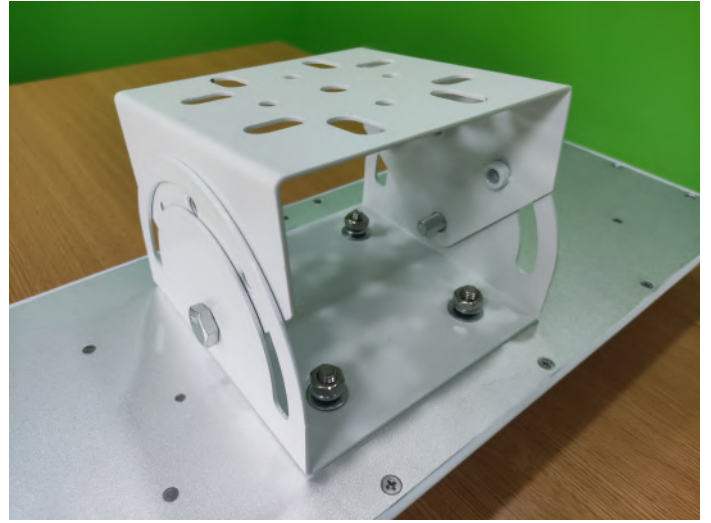
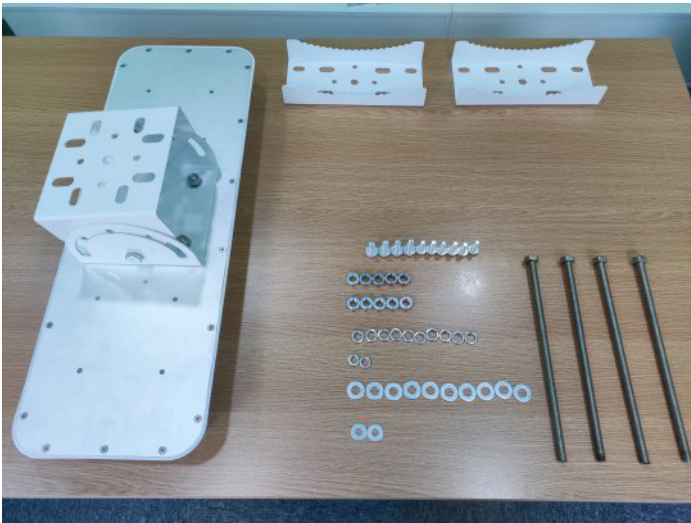
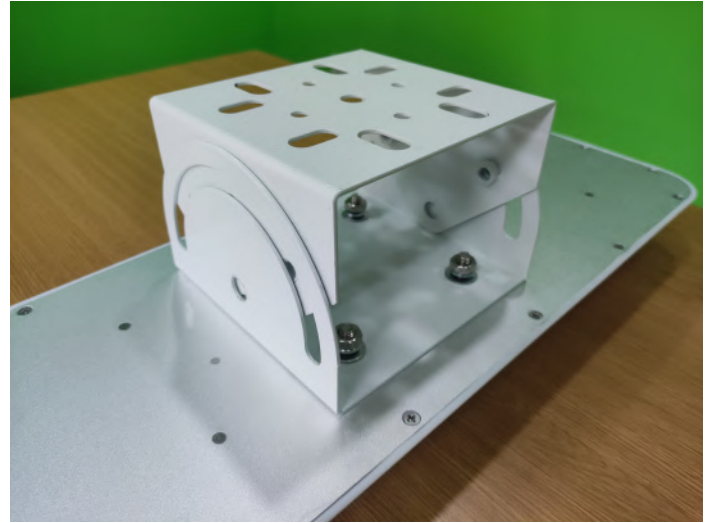
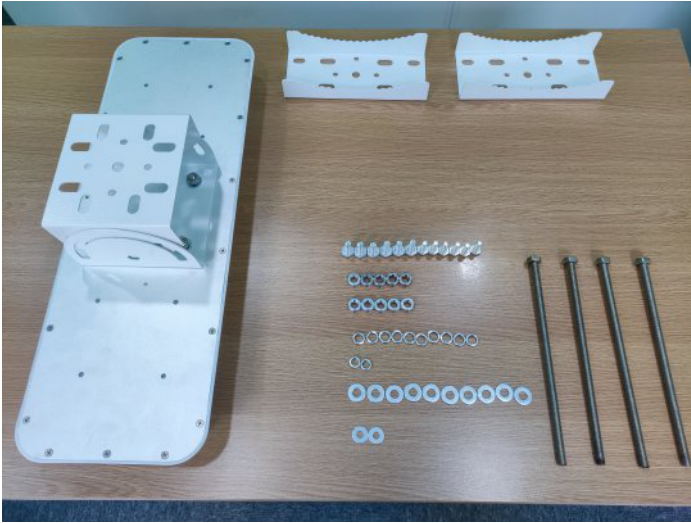
Step1: Fix the bracket 1 on the antenna with M8, flat washer and spring washer

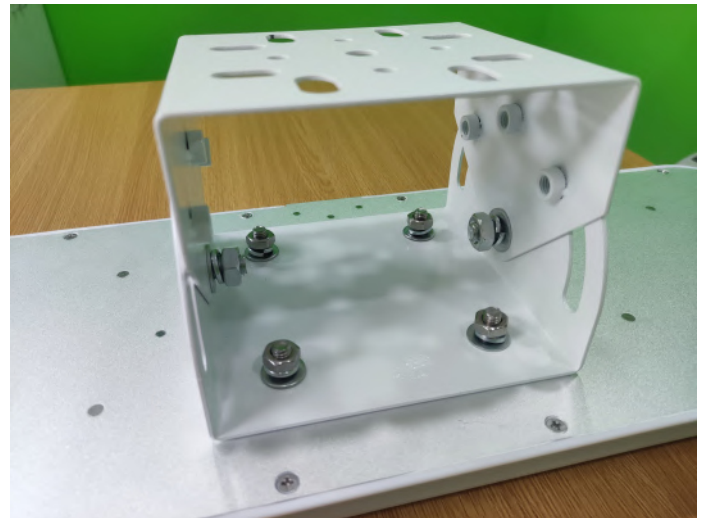
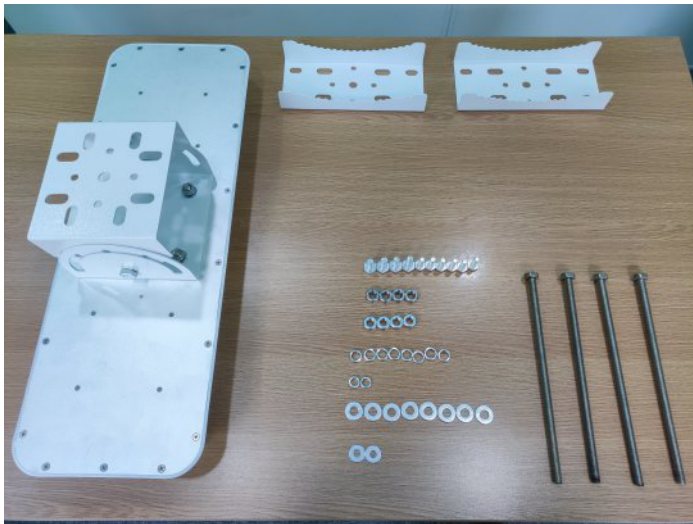




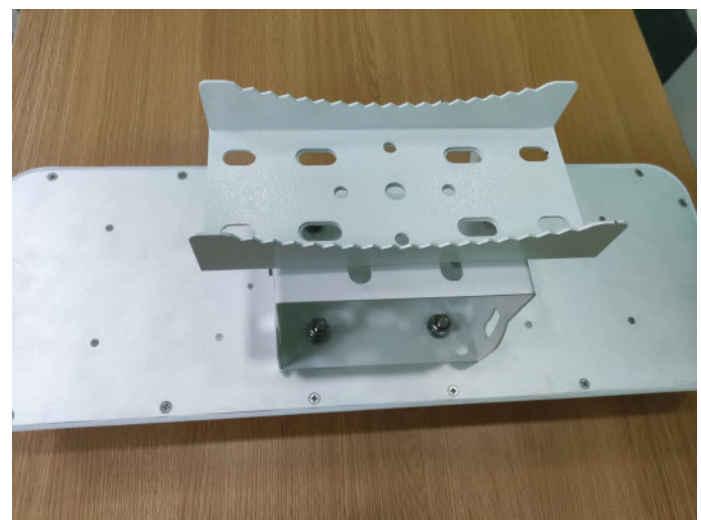
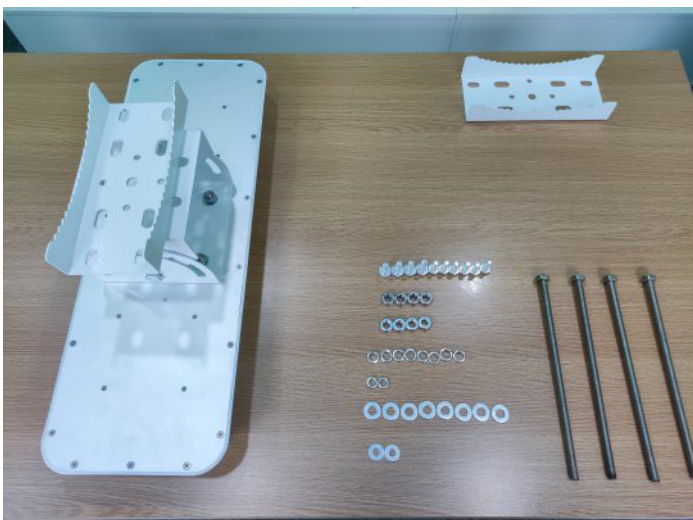
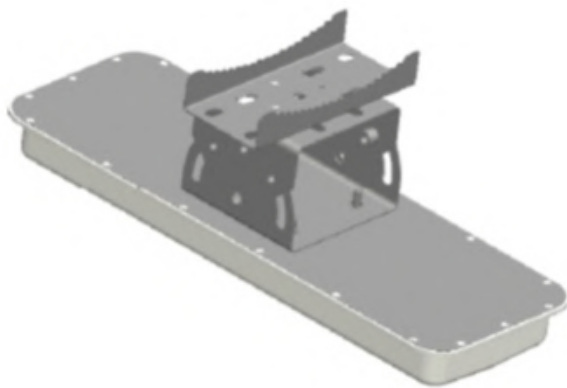
Step 2: Fix the bracket 2 on the antenna with M10, flat washer and spring washer

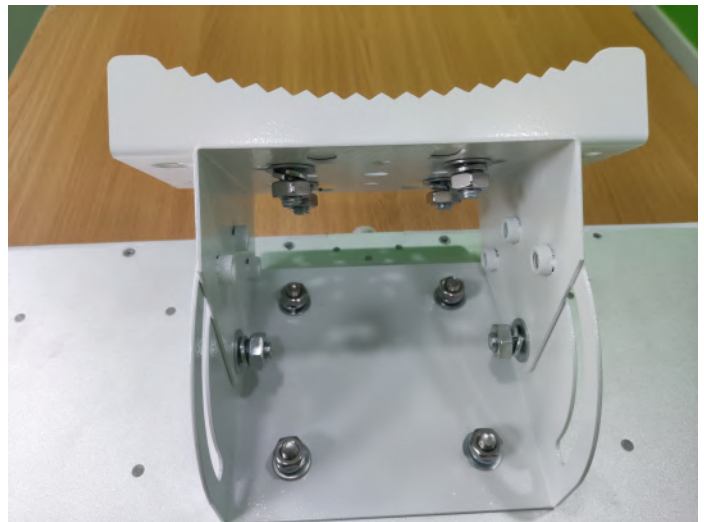
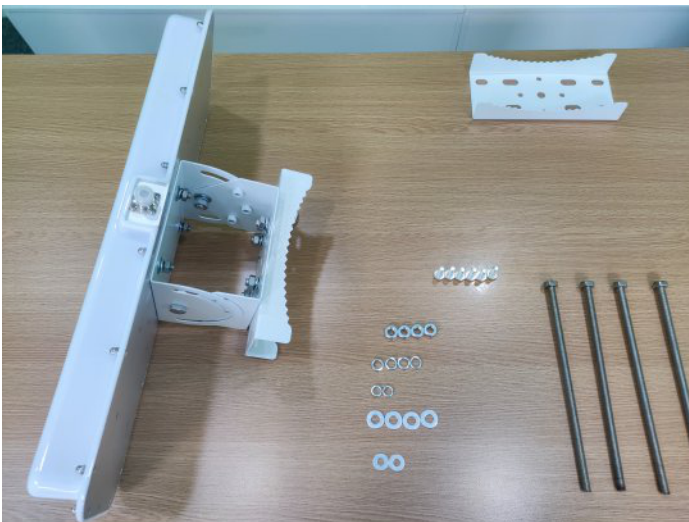
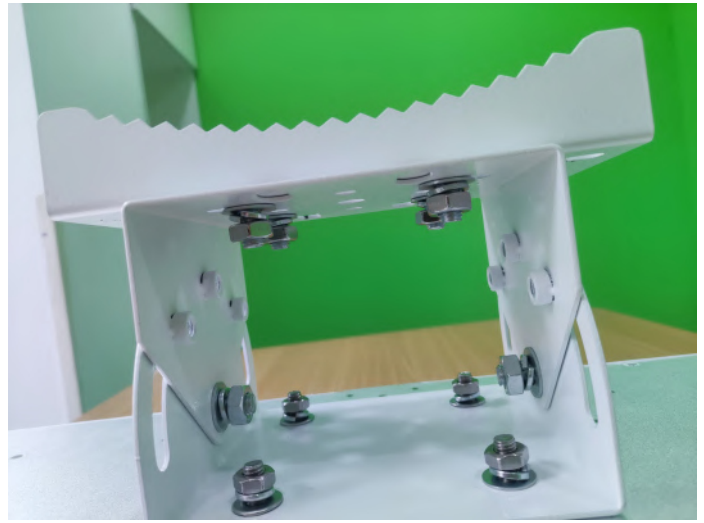
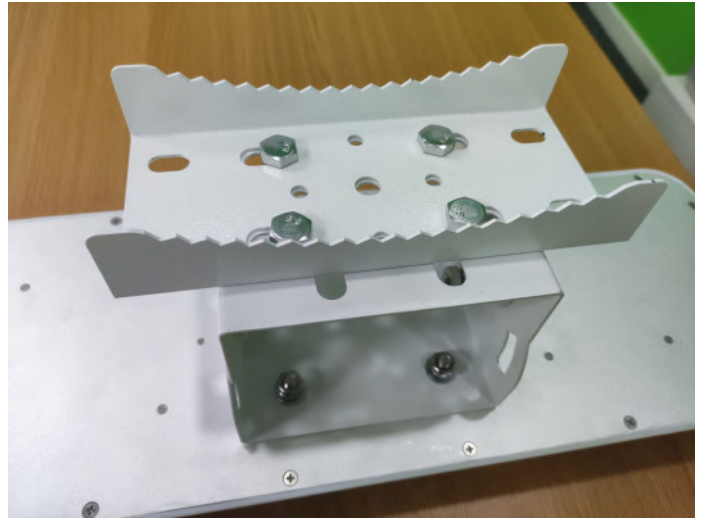
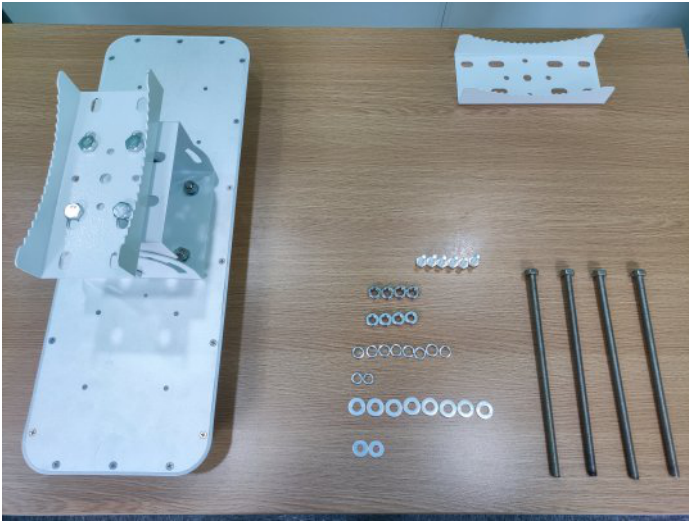




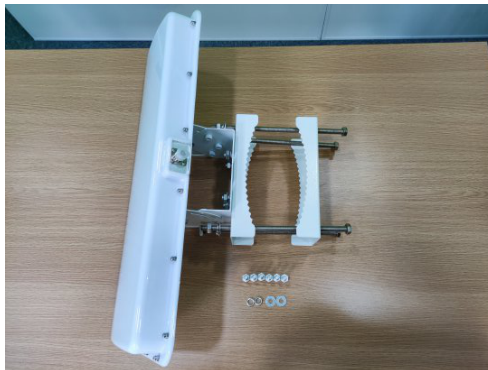
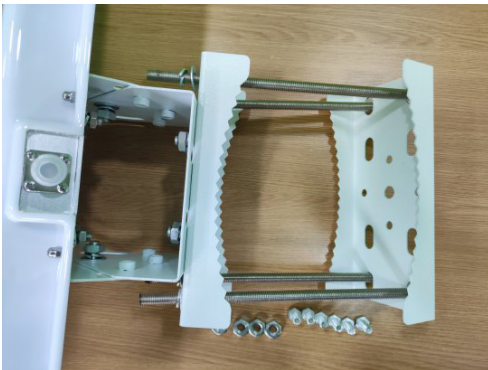
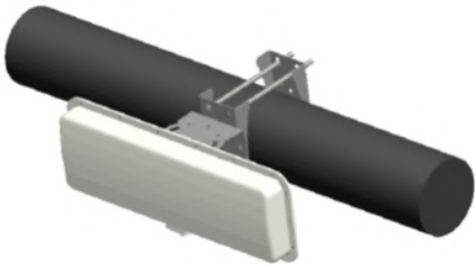


Step 3: Fix the dog tooth fixture on the bracket 2 with M10 nut, flat washer and spring washer

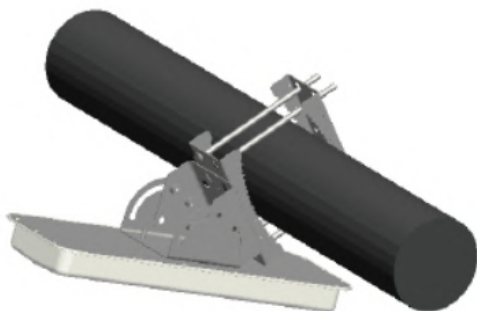




Step 4: Use the dog tooth fixture, M10 nut, spring washer and flat washer to fix the antenna on the horizontal or vertical steel frame structure or pillar



Step 5: Adjust the screws on bracket 1 and bracket 2 to get the right mounting position.





Accessories & Compatible Products

Vulcan RFID™



VUL-LINE12-FCC



About Vulcan RFID™ Products

Vulcan RFID™ offers a broad range of innovative RFID antennas, RFID inlays, custom RFID tags, and accessories suited for a wide variety of industries and applications. With an extensive portfolio, Vulcan RFID™ products are manufactured to withstand environments ranging from mild to extreme. All Vulcan RFID™ products are thoroughly tested and built on a name you can trust. Vulcan RFID™ products enable you to reach and sustain high levels of performance with your UHF or NFC frequency application.



Vulcan RFID™ Antennas

Vulcan RFID™ offers an extensive collection of UHF RFID antennas designed to maximize the RF performance and coverage area of an RFID system.

[Shop Now](#)



Vulcan RFID™ Tags & Inlays

Vulcan RFID™ offers a broad range of RFID labels, tags and inlays built to withstand environments ranging from mild to extreme.

[Shop Now](#)



Vulcan RFID™ Accessories

Vulcan RFID™ provides a variety of high-quality accessories, RF hardware, and cables.

[Shop Now](#)



atlasRFIDstore

Inside USA
1 (888) 238-1155

Outside USA
1 (205) 383-2244

info@atlasRFIDstore.com
www.atlasRFIDstore.com