



VULCAN RFID™

FORGING INNOVATION

Quick Start Guide

Introduction

The Vulcan RFID Titanium is a 4-port, high power, high performance UHF reader specially designed for on-reader applications.

Vulcan RFID Titanium features:

- On-board Linux computer: program your own software routines, saving the need and cost of an external computer
- 4 antenna ports
- Maximum transmit power: 31.5 dBm
- Maximum receive sensitivity: -85 dBm
- USB HID emulation
- Controls up to 1024 antennas, with multiplexers
- 2 x digital/analog inputs
- 2 x additional digital inputs
- 8 x digital outputs
- 4 x Direct LED connections (100 mA)
- 4 x GPO (lines 8 mA)
- 1 x relay enabled output
- Loudspeaker: 8 ohm/2 W
- Powers up external devices: non-isolated power output: 5 V, 200 mA (DC)
- Powered through PoE, 12 V -24 V power supply, and external battery
- Communications interface: Ethernet, optional WiFi
- Comes installed with Vulcan RFID Connect software for advanced monitoring and control

In the box: Vulcan RFID Titanium Reader, Ethernet Cable, Mounting Screws

Getting Started

1. Connect Antenna

Connect an antenna to port 1 with an RF cable.



Never connect/disconnect an antenna while the reader is powered on. Always disconnect the reader from the power supply before connecting/disconnecting antennas.



2. Power the Reader

Connect one end of an ethernet cable to the LAN in & PoE port on the Titanium.

Connect the other end of the ethernet cable to a PoE source.

It will take 40-50 seconds for the reader to boot. You will hear a beep when it is booted.

Note: For other power options please reference the User Guide found at vulcanRFID.com/support

3. Log Into Vulcan RFID Connect

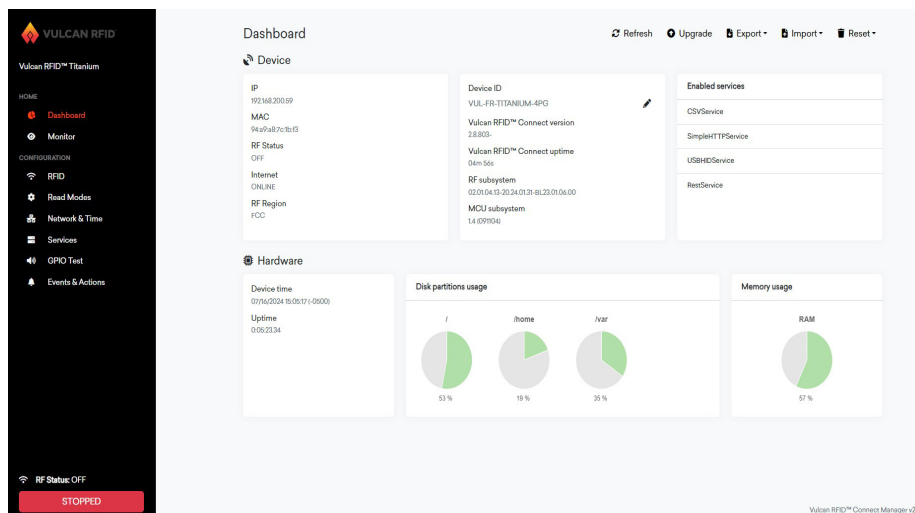
Open a Chrome browser and go to <http://VUL-TITANIUM-4PG-xxxx>, replacing the x's with the last 4 characters of the reader's MAC address printed on the back of the reader.

Log in using the following credentials:

Username: admin

Password: admin

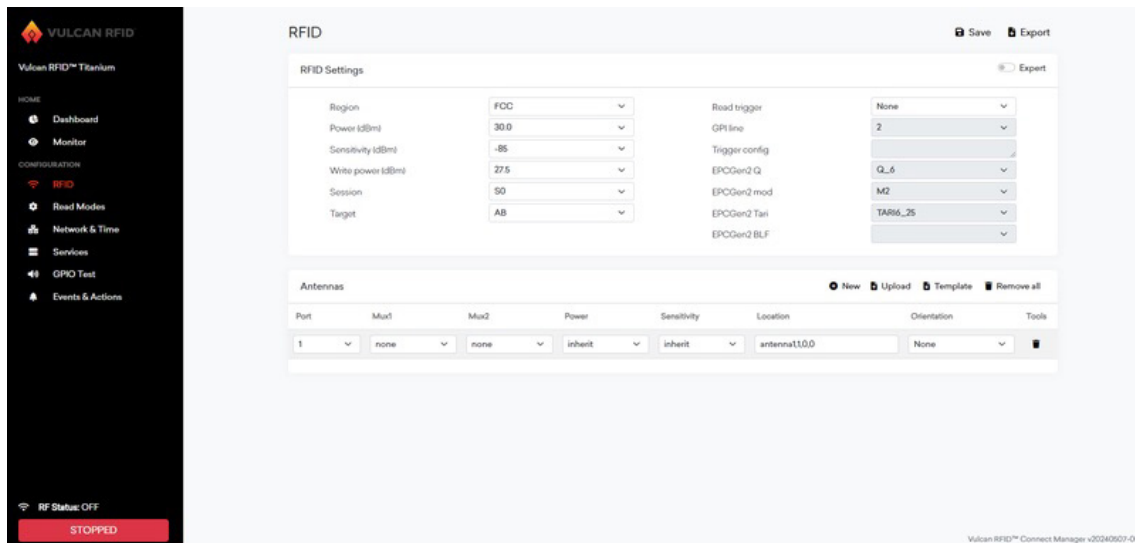
Now you should see the Vulcan RFID Connect dashboard:



Note: For non-DHCP enabled networks, please refer to the User Guide found at vulcanRFID.com/support.

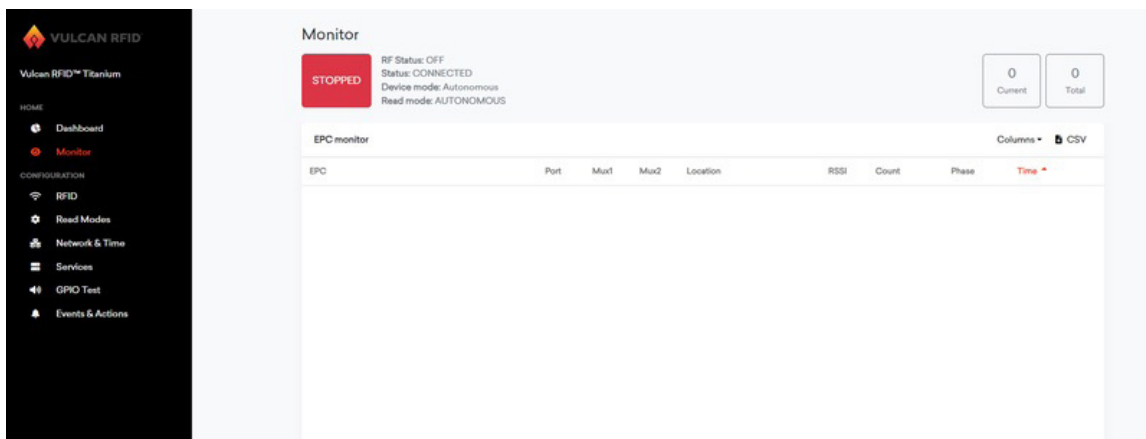
4. Begin Reading Tags

Navigate to the RFID tag on the left side of the page.



- Choose the correct region of operation
- Under “Antennas” verify antenna port 1 is selected
- Save the reader settings by clicking “Save” at the top of the page

Navigate to the Monitor tab on the left side of the page.



Click the red “STOPPED” button to begin inventory. Tag reads will begin streaming on the page.

Monitor

RF Status: ON
 Status: RF_ON
 Device mode: Autonomous
 Read mode: AUTONOMOUS

7 Current | 7 Total

EPC monitor Columns ▾ CSV

EPC	Port	Mux1	Mux2	Location	RSSI	Count	Phase	Time
10000000	4	0	0	-	-67	1	110	12:29:46:779
20000000	4	0	0	-	-64	1	57	12:29:46:770
11000000	4	0	0	-	-80	1	153	12:29:46:758
1a1e4d9c7839a4e528fc5c11	4	0	0	-	-83	1	101	12:29:46:755
22000000	4	0	0	-	-71	1	48	12:29:46:748
21000000	4	0	0	-	-65	1	52	12:29:46:736
1a5e4d9c7839a4e518d84cd3	4	0	0	-	-76	1	67	12:29:46:524

Click the green “STARTED” button to stop the inventory.

For more information on reader configuration, please visit vulcanRFID.com/support or email info@vulcanRFID.com.