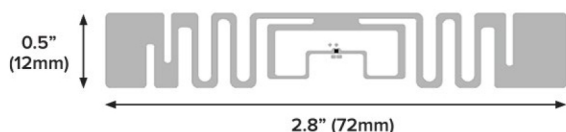


# BoingTech™ BT0573 U9 Inlay

## General purpose 72 mm wide inlay

A successful RFID solution requires high-performing thermal labels and inlays. As the global leader in RFID technologies offering end-to-end RFID solutions, Zebra is your trusted expert in all things RFID. Certified by Zebra, the BoingTech BT0573 U9 inlay provides high-sensitivity and longer read ranges for industry-leading performance. BoingTech BT0573 U9 inlays are pre-tested to work seamlessly with Zebra printers and readers to help maximize the benefits of RFID across your enterprise.



### High Sensitivity for Longer Read Ranges

Designed with a high-sensitivity NXP UCODE 8 chipset, the BoingTech BT0573 U9 inlay delivers read ranges up to 18 m resulting in over 50% further than other inlays in its class.

### Exceptionally Consistent and Consistently Exceptional Custom RFID Labeling Solutions

With our state-of-the-art presses and RFID manufacturing equipment, we can create a customized RFID labeling solution to meet the unique requirements of your application. We use the same material from order-to-order, and never substitute materials, to safeguard consistency and quality.

### Zebra Certified to Ensure Industry-Leading Performance and Low Instance of Printer Voids

Zebra's Supplies R&D team has characterized read range performance on our Voyantic Tagformance test equipment to measure performance on a variety of surfaces and orientations. Inlay positions have been tested in industrial, desktop, and mobile RFID printers so that the most effective position is matched for the printer being used, resulting in the fewest printer voids. Our combined expertise in RFID printer and label manufacturing gives you the assurance the inlay will be produced to ISO 9001 processes with consistent inlay placement.

### Unmatched Expertise in RFID

Zebra offers RFID solutions customized for your application with the highest-performing inlays and chips. We have played a central role in pioneering RFID technologies and defining global standards since the mid-1990's, when smart-label technology first appeared. We were recognized as the #1 RFID brand by the 2018 RFID Journal's Brand Report. And we hold more than 575 RFID patents and numerous industry firsts in RFID.

# Specifications

## Technical Information

Chip	NXP UCODE 9
EPC memory	96 bit
User memory	N/A
TID	96 bit factory locked (48 bit unique)
Read Sensitivity	-24 dBm
Write Sensitivity	-22 dBm
RFID Standards	EPC Gen2v2
Read Range	N/A

### Theoretical Read Range: ETSI (865-868 MHz)\*

Air	12 m
Cardboard	17 m
Fiberglass	17 m
Glass	15 m
PTFE	21 m
Polyacetyl	13 m
PVC	14 m
Rubber	14 m

### Theoretical Read Range: FCC (902-928 MHz)\*

Air	18 m
Cardboard	15 m
Fiberglass	18 m
Glass	10 m
PTFE	15 m
Polyacetyl	16 m
PVC	17 m
Rubber	10 m

## Testing and Compliance

All inlays certified by Zebra have been pre-tested with Zebra printers and readers.

## Product Performance and Suitability

Storage Temperature	-55°C/+125°C
Operating Temperature	-40°F to 158°F (-40°C to 70°C)

## Warranty

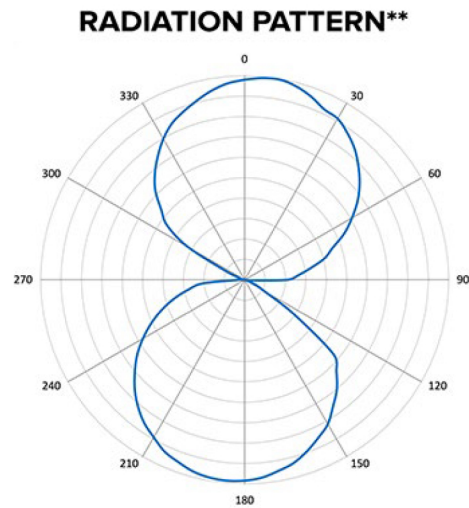
Supplies are warranted against defects in workmanship and materials for a period of 1 (one) year from the date of shipment. For the complete warranty statement, please visit: [www.zebra.com/warranty](http://www.zebra.com/warranty)

## Footnotes

\*Theoretical read range data is meant to be directional. Actual performance will depend on your application and environment. Testing is recommended.

## Radiation Pattern

\*\*Read range drops to 12% of maximum when inlay is perpendicular (90° and 270°) to the reading antenna. To learn more about Radiation Pattern visit [www.zebra.com/rfidlabels](http://www.zebra.com/rfidlabels)



## Markets and Applications

### Transportation and Logistics

- Item/case labeling

### Warehousing

- Item/case labeling
- Work-in-process

### Retail

- Item/case labeling
- Exception tagging

### Healthcare

- Item/case labeling

### Government

- Item/case labeling

### Manufacturing

- Item/case labeling



1 (888) 238-1155 Inside USA • 1 (205) 383-2244 Outside USA  
info@atlasRFIDstore.com • www.atlasRFIDstore.com

