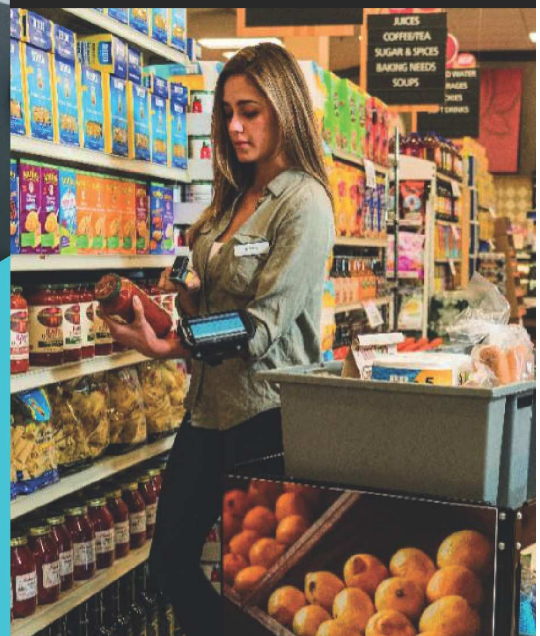
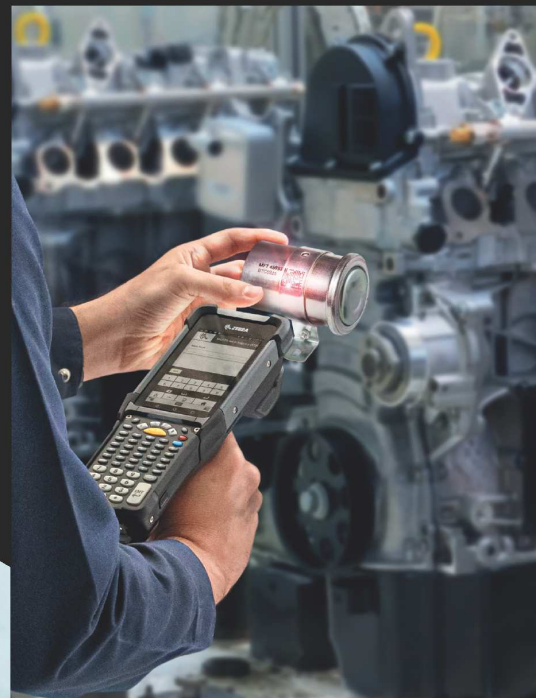




Enterprise Mobile Computers

Leading-edge mobility for a competitive edge



More People Trust Zebra Mobile Computers for Enterprise Than Any Other Manufacturer in the World

For over 50+ years, we have been the unmatched global market leader in rugged mobility. Decade after decade, we've been committed in the long run to providing you with the best in enterprise technology. The fact is that more organizations trust Zebra than any other manufacturer in the world, including many Fortune 500 companies worldwide.

We are at the forefront of the Android™ revolution, the future of enterprise mobility. Since 2011, we've been championing the migration of the enterprise mobility sector from legacy Windows® operating systems to Android. With the largest and fastest expanding portfolio in the entire market, we have the right enterprise Android solution to fit your specific application.

We deliver features and benefits no one else can. Using decades of innovation, we design and optimize every mobile computer for real-world usability and harsh environments. And we back Zebra Android mobile computers with a powerful and exclusive suite of intelligent software, apps and utilities—Mobility DNA. With such expansive capabilities, Mobility DNA boosts productivity, smooths integration, simplifies and secures management and accelerates app development.

When it comes to mobility,
no one can push your
performance edge like Zebra.



A Performance Edge for Any Environment

Wherever work takes you, perform your best. True mobility is designed specifically for your environment, applications and challenges—whether inside your four walls or outside in the harsh elements. Here's how Zebra can give your business the performance edge for your industry.



Transportation and Logistics

Deliver non-stop service from the first mile to the last

- Cross-docking and stocking
- Picking and packing
- Shipping and receiving
- Put-away
- Inventory management
- Proof of delivery
- Airline operations
- Reverse logistics



Manufacturing

Increase productivity from the plant floor to the front door

- Traceability
- Quality assurance/inspections
- Asset and facility management
- Picking/shipping
- Proof of pickup and delivery
- Fleet management
- Direct store delivery
- Cross-docking
- Line side replenishment/WIP
- Maintenance/field service



Healthcare

Strengthen patient safety with accuracy from admissions to discharge

- Medical administration
- Blood transfusion
- Healthcare communication
- Specimen collection
- Laboratory/pharmacy management
- Visiting nurses/home health



Retail and Hospitality

Give customers an experience that keeps them coming back

- Click and collect
- Inventory management
- Mobile point of sale
- Staff enablement and communication
- Assisted selling
- Interactive kiosks



Government and Public Safety

Improve services and safety with intelligent mobility

- E-citation
- Human services
- Identity management
- Code inspections
- Dispatch & records management
- Maintenance repair operations





Mobile Computers Are a Start But a Complete Enterprise Solution Should Go End-to-End

Look beyond mobile computers. Consider multi-tasking tablets, accurate scanners and steadfast printers that integrate easily, pair instantly and talk freely to one another. That's how you can make management, usage and sharing of critical information much more effective and impactful.

What makes Zebra's edge-to-edge portfolio different? Each device is strong alone. Yet together, they'll make your workers unstoppable.



Mobility DNA

With mobile intelligence, performance is touch...and go

Without embedded intelligence, mobile computers are more stop than go. Zebra's Mobility DNA not only empowers workers, but also meets the needs of IT with the industry's most evolved and extensive suite of software.

And as your needs evolve, so too does Mobility DNA.



Management Tools

Simplify management via centralized tools and fortified security

- Deepens control and visibility
- Optimizes uptime
- Accelerates troubleshooting
- Offers government-grade encryption
- Locks apps



Productivity Tools

Get the most out of every minute

- Makes jobs easier
- Completes tasks faster
- Boosts accuracy
- Sidesteps downtime



Business Tools

Optimize the way enterprise workers communicate and work

- Increases collaboration with instant communication
- Maximizes every minute with smarter workflows



Protection and Peace of Mind

Extend the life cycle of Android enterprise mobile computers. Get aggressive, predictable, security patch updates

- LifeGuard™ for Android
- Adds up to 10 years of OS security support
- 90-Day recurring security patches
- Significantly lowers total cost of ownership
- Simplifies management and remote updates



Development Tools

Effortlessly develop and integrate applications into mobile devices

- Migrates operating systems smoothly
- Expedites deployments
- Reduces risks, errors and delays





Handheld Computers

Versatility and velocity go hand in hand

So smart, these multi-taskers speed up work. And a familiar interface is one you'll immediately recognize and know how to use. But unlike consumer devices, they won't fail you. They are made for work—tough-as-nails and ultra-secure.

	Mobile Computers		Touch Computer
	MC3300x	MC9300	TC8300
	Enterprise	Performance	Performance
Manufacturing	•	•	•
Retail & Hospitality	•	•	•
Transportation & Logistics	•	•	•
Government & Public Safety	•	•	•
Mobility DNA	•	•	•



MC3300x Mobile Computer

Easy, advanced Android mobile computing

The highly successful and widely adopted MC3000 product family delivers unmatched versatility and flexibility

Features

- Four form factors: Brick Straight Shooter; Brick 45° Angle Scan; Brick Turret/Rotating Scanner; Gun/Pistol Grip
- Three different keyboard options
- Advanced industrial barcode scanning, 3 in. to 70 ft.
- Supports ease of Android migration with All-Touch Terminal Emulation

Portfolio Differentiators

- 35% more battery capacity than the legacy MC3300
- Increased ingress protection and tumble durability from the legacy MC3300
- Simplified configuration options compared to the MC3300



MC9300 Mobile Computer

The ultimate Android ultra-rugged mobile computer

The latest evolution of the world's best-selling and most trusted Android enterprise mobile computer

Features

- Multiple model options: Non-Incendive, Freezer, DPM (Direct Part Mark)
- Backlit keypad with seven field replaceable ultra-rugged keyboard options
- Supports ease of Android migration with All-Touch Terminal Emulation
- Front and rear color camera
- Up to 10 years of OS security and support with LifeGuard™ for Android

Portfolio Differentiators

- Can help your workers be 10% more productive*
- Most rugged mobile computer in the portfolio
- Largest display/touch screen with physical keyboard in handheld mobile computer portfolio
- Lighter in weight and improved center of gravity over the legacy MC9200

*Performance improvements of Zebra devices vs competitive devices measured by a third-party testing laboratory.



TC8300 Touch Computer

Provide the ultimate user experience

The world's most revolutionary enterprise touch-computer design to boost productivity and reduce user fatigue.

Features

- Advanced industrial barcode scanning, 3 in. to 70 ft.
- Supports ease of Android migration with All-Touch Terminal Emulation
- Battery that lasts 3 consecutive shifts
- Option for DPM (Direct Part Mark) scanning

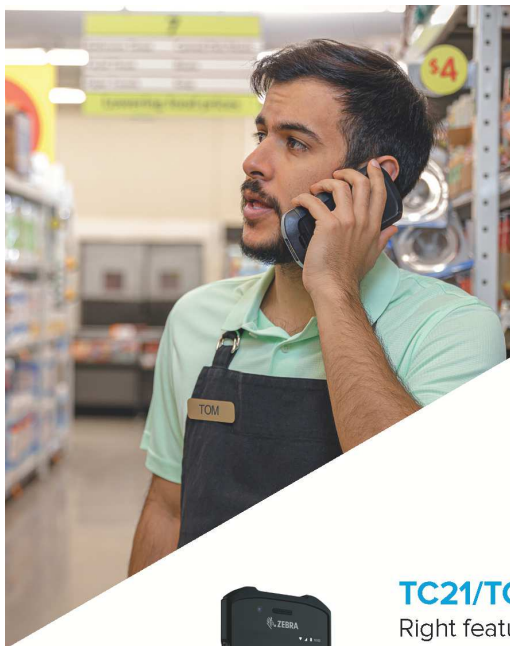
Portfolio Differentiators

- Revolutionary design reduces wrist motion by 55% and muscle effort by 15%*
- Can boost your workers productivity by 14%**
- Significantly lighter than traditional handhelds
- Industry-first hands-free proximity scanning

*Results are dependent on use case and scan frequency

**Zebra Human Factors Testing





TC20/TC25 Mobile Computers

Big performance for small businesses

Zero training needed to use these hardworking, smart business tools designed for small business.

Features

- Push-to-Talk (PTT) inside and outside the four walls
- Integrated barcode scanning
- Online order click and collect

Portfolio Differentiators

- Durable
- Route optimization
- Scheduling and location-based services



TC21/TC26 Touch Computers

Right features, ruggedness and business class accessories

With multiple configurations at different price points, you pay only for the features your application requires.

Features

- 5-inch HD touch screen
- 13MP rear camera/5MP front camera
- MobilityDNA™ Professional integrated solutions

Portfolio Differentiators

- Durable, lightweight right-sized, small design
- First device in its class to offer Android 10
- MobilityDNA Enterprise License option



TC51/TC56 Series Touch Computers

Everything workers want, everything business needs

The durability, enterprise-class features, power, security and manageability businesses require.

Features

- 5-inch HD touch screen
- Active Edge Touch Zone for one-touch feature access
- 14-hour battery life, full battery statistics

Portfolio Differentiators

- Advanced scanning technology and PRZM Intelligent Imaging
- A complete suite of enterprise accessories
- Uses FIPS140-2 validated cryptographic modules



TC52/TC57 Series Touch Computers

Rugged and ready

The next generation TC5 Series, with a new platform and new capabilities to deliver the ultimate in enterprise-class touch computing.

Features

- 5-inch HD touch screen
- Active Edge Touch Zone for one-touch feature access
- 14-hour battery life, full battery statistics

Portfolio Differentiators

- Programmable dual-action left & right side-scan triggers and PTT button
- Public Safety LTE network for first responders (TC57)
- Visible Light Communications (VLC)



TC52x/TC57x Series Touch Computers

Packed with innovative new features

More advanced Zebra-only features and support for the latest mobile innovations paving the way for new applications and superior future proofing.

Features

- High resolution 5-inch full HD touch screen
- Complete cellular network flexibility with support for carrier aggregation
- Backwards compatibility with all TC5X accessories

Portfolio Differentiators

- Faster 2.45 GHz processor and new Universal Flash Storage (UFS)
- First device in its class to offer Android 10
- SE4720 advanced scan engine for fastest, easiest data capture



TC70x/TC75x Series Touch Computers

Your front line to a smarter enterprise

An ultra-rugged design built for the enterprise from the ground up for reliable everyday operation.

Features

- Advanced scanning technology and PRZM Intelligent Imaging
- Withstands multiple 8ft./1.8m drops to concrete
- Ships with Mobility Extensions (Mx)

Portfolio Differentiators

- A choice of Android OS with or without Google Mobile Services (GMS)
- Value-add MobilityDNA business tools
- Power Precision+ battery for best-in-class power and manageability



TC72/TC77 Series Touch Computers

The ultimate ultra-rugged enterprise all-touch computing

A smartphone experience for maximum simplicity, designed to withstand years of the toughest use.

Features

- Withstands multiple 6ft./1.8m drops to concrete
- 15-hour battery power; full battery statistics
- Programmable dual-action left & right side-scan triggers and PTT button

Portfolio Differentiators

- More capabilities than any other device in this class
- Advanced touch screen technology
- Value-add Mobility DNA Business Tools



EC30 Enterprise Computer

The perfect companion for your unconnected workforce

Delivering all the right data features to bring a new level of efficiency and accuracy to core everyday tasks.

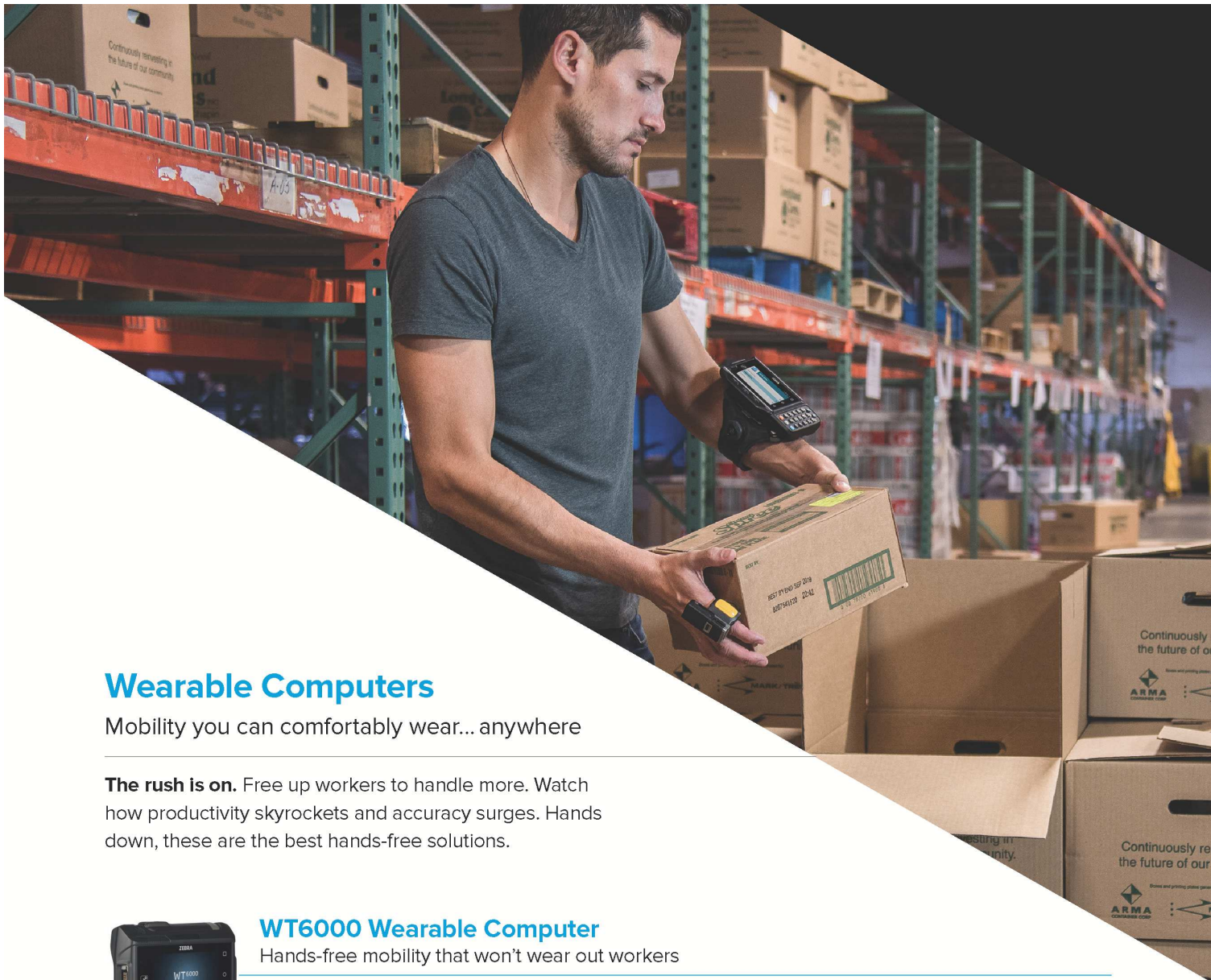
Features

- Push-to-Talk (PTT) inside and outside the four walls
- Voice Calls through the PBX
- Secure text messaging

Portfolio Differentiators

- Small, lightweight and durable
- Time and attendance tracking
- Price check and item lookup

	Touch Computers							Enterprise Computer
	TC20/ TC25	TC21/ TC26	TC51/ TC56 Series	TC52/ TC57 Series	TC52x/ TC57x Series	TC70x/ TC75x Series	TC72/ TC77 Series	EC30
	Professional	Professional	Enterprise			Performance		Professional
Manufacturing			•	•	•	•	•	
Retail & Hospitality	•	•	•	•	•	•	•	•
Transportation & Logistics	•	•	•	•	•	•	•	
Healthcare			•	•	•			
Government & Public Safety			•	•	•	•	•	
Mobility DNA	•	•	•	•	•	•	•	•



Wearable Computers

Mobility you can comfortably wear... anywhere

The rush is on. Free up workers to handle more. Watch how productivity skyrockets and accuracy surges. Hands down, these are the best hands-free solutions.



WT6000 Wearable Computer

Hands-free mobility that won't wear out workers

The wearable mobile computer that gives your workers the hands-free mobility they need.

Features

- Integrated NFC allows instant tap-to-pair with Zebra's Bluetooth® ring scanners and headsets
- Flexible data entry with touch-screen or detachable keypad accessory
- Supports ease of Android migration with All-Touch Terminal Emulation

Portfolio Differentiators

- Compact size and lighter weight than other wearables
- Can boost productivity by 15%*
- Charge your WT6000 and RS6000 at once in the same cradle

* "Multi-modal Picking Usability Testing-E-Commerce", United States Ergonomics, July 31, 2015.

	Wearable Computers						
	WT6000	RS4000	RS5000	RS5100	RS6000	HD4000	HS3100/ HS2100
Manufacturing	•	•	•	•	•	•	•
Retail & Hospitality	•	•	•	•	•	•	•
Transportation & Logistics	•	•	•	•	•	•	•
Mobility DNA	•						



RS4000 Corded Ring Scanner

Flawless fulfillment at your fingertips

The powerful single-finger corded ring scanner that enables hands-free scanning.

Features

- Bright scan line to ensure precision aiming
- Easy to deploy and plug into your WT6000 wearable computer
- Scans virtually any 1D barcode in any condition

Portfolio Differentiators

- Lightweight scanner
- Can be worn on a single finger on either hand for maximum comfort
- Two scanning modes, press the trigger button once or keep the trigger depressed to continuously scan



RS6000 Bluetooth® Ring Scanner

Scan faster and 4x farther

The industry's most advanced most rugged Bluetooth® ring scanner.

Features

- Multi-color LED line-of-sight sorting
- Advanced scanning technology and PRZM Intelligent Imaging
- Charge your WT6000 and RS6000 at once in the same cradle

Portfolio Differentiators

- Can scan faster and up to 4x farther than the competition
- Easy Bluetooth® and NFC tap-to-pair with other Zebra mobile computers
- 5x the battery power of the competition



RS5000 1D/2D Corded Ring Scanner

Maximize every minute and dollar

The single finger corded ring scanner that enables hands-free scanning.

Features

- Lightweight scanner
- Advanced scanning technology and PRZM Intelligent Imaging
- Capture barcodes from near contact to over 25in./63.5cm

Portfolio Differentiators

- Can be worn on a single finger on either hand for maximum comfort
- Easy to deploy and plug into your WT6000 wearable computer
- Supports sub-zero freezer operations



HD4000 Head-Mounted Display

Hands-free direction in your workers real-time field view

The first of its kind rugged enterprise head-mounted display needed to improve productivity and task accuracy.

Features

- Rugged to withstand everyday drops, dust, and water
- Flexible design with adjustable frame for either left or right eye use
- Simple integration of industry applications
- Key hardware component to Zebra's FulfillmentEdge Solution

Portfolio Differentiators

- Best-in-class see-through display technology
- Lighter than any other wearable optic display on the market at less than 1.06oz/30g (weight applies to module only, not the glasses, mount or cable)
- No batteries required. Leverages the battery of the host mobile computer or tablet it is plugged into



RS5100 Bluetooth® Ring Scanner

Single-finger featherweight and rugged

The single-finger Bluetooth® ring scanner that enables hands-free mobility giving workers featherweight comfort.

Features

- Advanced scanning technology and PRZM Intelligent Imaging
- Flexible wearing styles, on right or left hand, on the back of the hand or on a lanyard
- Multiple trigger options; single trigger, double trigger or top trigger
- Two-piece design that separates the trigger assembly from the scanner body (trigger assembly can be personally issued and is field replaceable)

Portfolio Differentiators

- Practically weightless for all day comfort
- Instantly tap-to-pair with Zebra's WT6000 or other Zebra mobile computers integrated with NFC
- Only ring scanner in its class that can support back-to-back shifts without recharging the battery



HS3100/HS2100 Headsets

The sound choice for a superior voice experience

Rugged Bluetooth® and corded HD voice headsets built for the most demanding industrial environments.

Features

- Superior noise cancellation technology
- HD voice for superior audio clarity and quality
- Easy Bluetooth® and NFC tap-to-pair with other Zebra mobile computers (HS3100only)

Portfolio Differentiators

- Perfect combination of light and rugged
- Supports freezer operations
- Hot swappable battery (HS3100only)

Rugged Enterprise Tablets

Professional tablets built for a hard day's work

There's no request these rugged tablets can't handle. Price checks. Inventory lookup. Line busting. Pre-trip checklist. Real-time route updates. GIS or CAD software. Proof of delivery. Every feature and form factor was made to expedite your everyday tasks. Inside the four walls and outside in the harshest environments.



L10 Ultra-Rugged Tablet Platform

Versatility meets ruggedness

Ultra Rugged with unmatched connectivity and expandability

Features

- Choice of three form factors, multiple CPUs, Windows or Android
- Attachable keyboard creates a true 2-in-1

Portfolio Differentiators

- XPad with rigid handle for easy handling and scanner option
- Kickstrap combines rotating hand-strap with kickstand
- Rated IP65 with doors open and 6' drop while operating



R12 XSLATE Rugged Tablet

Large screen, yet lightweight

Features

- 12.5" Sunlight viewable Active Display
- Under 3 lbs
- Four CPU choices

Portfolio Differentiators

- Large screen is good for vehicle mounting, but light enough to still carry
- RFID and scanner options



ET51 with Integrated Scanner and Payment Solution

Flexibility for line busting or inventory

Key Features

- Choose Windows or Android OS
- 8" screen and built in scanner
- Fully rugged design with hand strap

Portfolio Differentiators

- Includes hand strap and rugged frame as standard equipment
- Option for payment device (that charges in place)



ET51/ET56 Rugged Enterprise Tablets

Surprisingly rugged, thin and light

Key Features

- Choose 8" or 10" screen
- Windows or Android OS
- Fully rugged design

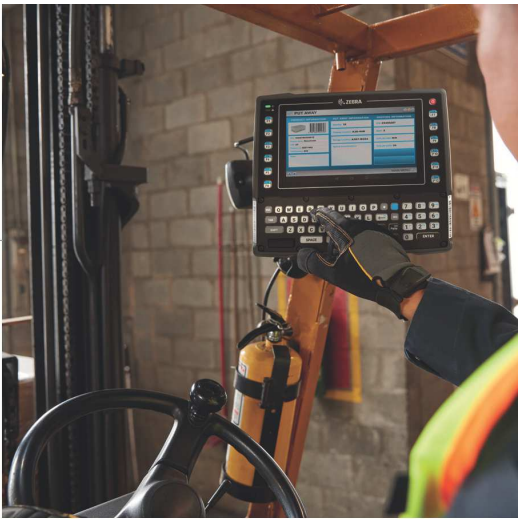
Portfolio Differentiators

- Lightest Zebra tablets
- Zebra scanners available
- Swappable batteries

Vehicle-Mounted Computers

Propel the pace from dock to stock

A spiraling quantity of orders. Complex item-level picking. Shorter delivery times. You don't have weeks to fulfill orders. Only hours. Give drivers unstoppable access to Win10 or Android applications, so their results are fast and flawless.



VC80 Series Vehicle-Mounted Computers

Put desktop applications at the fingertips of vehicle operators

The ultimate ultra-rugged Android (VC80x) and Windows 10 (VC80) touch vehicle mount computer for the most extreme environments.

Features

- VC80x: Supports ease of Android migration with Terminal Emulation
- Flexible mounting in virtually any material handling vehicle
- Configure Zebra scanners with the VC80 series to accelerate staging

Portfolio Differentiators

- Freezer ready for the coldest supply chains and condensing environments
- Optional heated rugged detachable keyboard
- Heated and vented UPS battery system keeps the device up and running over the full device temperature range



VC8300 Vehicle-Mounted Computers

The ultimate ultra-rugged design

Android keyboard/touch vehicle mount computer designed for the most extreme environments.

Features

- Flexible data entry with integrated full alphanumeric keyboard and 8 in. touch display
- Supports ease of Android migration with Terminal Emulation
- Configure Zebra scanners with the VC8300 to accelerate staging

Portfolio Differentiators

- Most advanced Android mobile computing platform (most powerful processors for superior performance)
- Freezer ready for the coldest supply chains and condensing environments
- Flexible mounting in virtually any material handling vehicle

	Rugged Enterprise Tablets				Vehicle-Mounted Computers	
	L10 Series	R12 XSLATE	ET51 with Integrated Scanner	ET51/ ET56	VC80 Series	VC8300
	Performance				Performance	
Manufacturing	•	•		•	•	•
Retail & Hospitality	•		•	•		
Transportation & Logistics	•	•	•	•	•	•
Healthcare	•			•		
Government & Public Safety	•	•				
Mobility DNA	•		•	•	•	•

Interactive Android Kiosks

When you need the capabilities of a tablet but not the mobility, these fixed, Android-based kiosks run all your current Android apps without battery management issues. Choose a 5" screen CC600 for small spaces and simple tasks like price checking and digital timeclocks, or a 10" CC6000 for enhanced customer concierge uses. These kiosks are equipped with support for the latest technology, a cutting-edge Android platform and powerful SD660 processors. VESA mounting and Power over Ethernet simplifies installations nearly anywhere. And their powerful tools make it easy to develop applications, integrate, deploy, and manage your kiosks. The results take customer engagement to a whole new level, giving customers the best of online and in-store shopping, with the convenient self-service capabilities they expect.



CC600 5" Multi-Touch Kiosk

Features

- Quickly install Android app availability wherever it is needed
- Brings convenience, speed and customer satisfaction to shopping
- Enables the power of self-service in every aisle or department
- Supports Wi-Fi, Bluetooth® and Ethernet

Portfolio Differentiators

- Compact, affordable and easy to install with floor-facing 2D scanner
- Integrated mic and speaker for live audio interaction



CC6000 10" Customer Concierge Kiosk

Engage customers for the ultimate shopping/service experience

Features

- Use for digital signage, product demos or Android interactive apps
- Integrated 2D scanner and full HD camera for remote video chat
- Tablet-like performance and connectivity for fixed installations
- Supports Wi-Fi, Bluetooth®, NFC, and Ethernet

Portfolio Differentiators

- Mount horizontally or vertically with floor-facing scanner
- Three integrated USB ports for easy expansion

Personal Shopper



PS20 Personal Shopper

Give shoppers the ultimate personalized shopping experience

The next evolution of the MC18—the same powerful device for your store associates to increase productivity.

Features

- Hands-free scanning
- Inventory management
- Online order click and collect

Portfolio Differentiators

- Revolutionary locationing
- Shopping-list pathing
- Frictionless checkout

	Interactive Android Kiosks		Personal Shopper
	CC600	CC6000	PS20
Retail & Hospitality	•	•	•
Transportation & Logistics	•	•	
Mobility DNA			•

Accessories

Speed and capabilities you'll get attached to

Don't keep customers waiting. Turn your mobile computer into a do-it-all mobile solution that does work faster. Whatever you need to simplify and speed up your day, we have. Choose from the widest array of enterprise-class accessories made for round-the-clock performance.



Carrying Solutions

Carry the day

Get a firm grip on work with belt clips, holsters, hand mounts or shoulder and hand straps that keep mobile devices handy. Choose from a wide range of sizes for maximum comfort. They're made to perform in your rugged environments.



Power Supplies

Charge ahead

Ensure all-day power, every day. Keep going with 24/7 Extension Back PowerPacks, warm and hot swap internal batteries, charging cradles and cables.



PowerPrecision Batteries

Built for durability and performance

The last thing you want is to run out of power in the middle of work. PowerPrecision batteries give you non-stop performance, because they're made to meet rigorous standards. Add to that PowerPrecision Management, and you have insight into your batteries' health and status. So you can start your day fully charged.



Docks, Cradles and Mounts

When productivity is the destination

Mount a plan of action with our lineup of docking and mounting solutions to fit any application, from desktop to wall mount; forklift to patrol car. Select from a variety of Zebra and third-party office, industrial and vehicle solutions, adapters, plates, braces and brackets.



And Then Some

Expand choices; expand capabilities

With this much versatility, there are accessories for every application. Ask us about our styluses, antennas, headsets, speakers, mobile payment options, screen protectors and more.



Global Services

Maximize uptime and ROI

Whether it's understanding operational utilization, maximizing predictability and uptime or simply unlocking the data of your edge devices, Zebra's portfolio of services provides expertise every step of the way.

Zebra OneCare™ Support Services

Constant, peak performance. That's the upside of protecting your investment with our support services. You eliminate unexpected disruptions and unbudgeted repair expenses. Whether you need comprehensive coverage, assistance with technical issues, visibility into your contracts and operational reports or on-site support, there's a Zebra OneCare Support Service that's right for you.* Choose the service level and requirements that fit your business needs:

Zebra OneCare Essential: Complete Assurance

- Comprehensive repair services
- Software support
- LifeGuard™ security updates
- 8x5 live-agent technical support
- 3-day repair turnaround service
- Device Diagnostics**
- Cloud-based visibility into repair and support reports—contracts, repair and case lifecycle reports, LifeGuard Analytics, repair on-time delivery, repair rates and top repair metrics – with VisibilityIQ™ OneCare,™ enabled by Enterprise Asset Intelligence and powered by Zebra Savanna™

Zebra OneCare Select™ Maximum Uptime

- All of the features of Zebra OneCare Essential service, plus:
- Next business day advanced device replacement
- Standard Commissioning services to ensure your OS and LifeGuard version, software, apps and settings are pre-loaded on your devices so you're ready to go out of the box
- 24x7 live-agent help desk technical support

Signature Services

Data insights from the technologies at the edge of your network can open up a world of new commercial opportunities. But without the right skills or resources, you could miss out on the full benefits. **Zebra Signature Services has nine capabilities that will help accelerate your ability to unlock intelligence from your data**, so you can run your business more productively.

Zebra Visibility Services

You could be caught off-guard by device downtime and battery failures when you don't have visibility into your device data to tell you how your devices are performing, so you can decide what next steps you can take to improve your operations. Without clear, comprehensive data on the mobile devices that run your business, you're in the dark trying to compensate with manual tracking, excessive inventory and repair.

Zebra's VisibilityIQ™ gives you data-driven, actionable insights when and how you need it. Get a clear view into how your devices are performing and know what next steps can push up productivity and drive down costs.

Zebra VisibilityIQ™ Foresight

Powered by Zebra Savanna™

Go beyond a MDM and view full operational aspects of your devices from a single cloud-based business intelligence tool.

Zebra VisibilityIQ™ DNA

Powered by Zebra Savanna™

Peer inside your hardware for answers to key DNA efficiency.

Zebra VisibilityIQ™ OneCare™

Powered by Zebra Savanna™

View status of device repairs, technical issues, contracts, case reports and software, and LifeGuard™ security status visibility.***

* Service availability, Service feature and/or repair turnaround time may differ by country. Please contact your Zebra sales representative for details.

** Zebra Mobile Computers only.

*** VisibilityIQ OneCare available for mobile computers and scanners only



ZEBRA and the stylized Zebra head are trademarks of Zebra Technologies Corp., registered in many jurisdictions worldwide. Android is a trademark of Google LLC. All other trademarks are the property of their respective owners. ©2020 Zebra Technologies Corp. and/or its affiliates. 6/2020

1 (888) 238-1155 Inside USA • 1 (205) 383-2244 Outside USA
info@atlasRFIDstore.com • www.atlasRFIDstore.com

atlasRFIDstore.com