

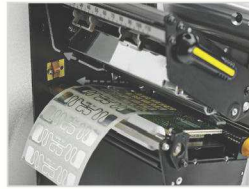
# Zebra ZT600 Series RFID Industrial Printers/Encoders

## STRONG, SMART AND SCALABLE RFID ENCODING

To stay ahead in today's highly competitive manufacturing or transportation & logistics industries, you need technology solutions that will grow with your business. ZT600 Series printers combine industrial durability and user-friendly features with future-proof adaptability—including a factory- or field-installable RFID encoder—to meet your evolving needs for years to come. Gain greater visibility of your printing systems with Link-OS® applications and managed Operational & Asset Visibility Services (OVS/AVS), plus the ability to deepen your insight into your entire business with advanced RFID printing and encoding.



ZT610™



RFID Encoder



ZT620™



### Get unparalleled visibility and control with Link-OS®

At Zebra, we believe printers should be as intuitive, user-friendly and integrated as the smartphones and other devices that keep us connected outside of work. With Link-OS, they are. This unique software platform gives you unprecedented, real-time visibility and control of your printing systems, on-site or remotely, with cloud-accessible applications that simplify everything from setup to management to troubleshooting.

## Expand your view with industry-leading tracking technology

It only takes five minutes to upgrade the ZT610 and ZT620 to RFID encoding in the field. Once RFID-enabled, these printers are engineered to accurately and efficiently print and encode labels for today's most advanced item-level tracking applications. Adaptive encoding enables media flexibility and simple RFID calibration, eliminating complex placement guides. An intuitive menu further reduces setup time. And Zebra's RFID technology is certified on six continents, providing operational visibility and business insight across complex, multinational supply chains.

### Get 24/7 reliability, even in the harshest environments

Built to deliver outstanding print quality under the most challenging industrial conditions, ZT600 Series printers virtually eliminate operational downtime due to printer failure. Their durable, all-metal designs hold up against extreme temperatures, dust, debris, moisture and worse. Guided instructions and feedback eliminate common errors and reduce manual adjustments for highly consistent printing. And high-quality print mechanisms and internal components deliver superior print quality and speed across the widest range of applications. A field-installable, full-width, guillotine-style cutter with catch tray is ideal for apparel tag applications.

### Reduce RFID Media Costs

Tags are spaced incredibly close together, with a distance (pitch) of 0.6"/16 mm or narrower on most RFID inlays—smaller than what other printer/encoders can accommodate. By spacing inlays closer, label converters use less material, which reduces your cost per label, requires fewer media roll changes and gives you faster printer/encoder throughput.

### Customize your configuration with flexible connectivity

System setup, integration and updates are a snap with virtually every modern connectivity option. Standard connectivity includes Serial, USB, Gb Ethernet, USB Host and Bluetooth® with optional Parallel, 802.11a/c, Applicator Port, IPv6 and BTLE capabilities. You also get two open media slots for non-standard connectivity options, design failover connections and provisioning for future protocols.

### Increase your efficiency with a user-friendly design

Every detail of the ZT600 Series was designed to put time back in your day. An intuitive LCD interface simplifies daily use. Color-illuminated media and ribbon paths streamline routine maintenance. Adjustable media width and pressure toggles easily accommodate more applications. And onboard sensors, diagnostics and help resources empower you to manage issues without having to call in support.



ZT600 SERIES – THE INDUSTRIAL BRAWN AND NEXT-GEN BRAINS TO MEET EVERY CHALLENGE HEAD-ON.

# ZT600 Series Specifications

## RFID

- Supports tags compatible with: UHF EPC Gen 2 V2, ISO/IEC 18000-63 and RAIN RFID protocols
- Integrated RFID system is user-upgradeable in the field and available on both 4" and 6" models
- Adaptive Encoding Technology automatically selects optimum encode settings
- Supports industrystandard, multi-vendor, chip-based serialization
- Supports block permalocking of user memory compatible with ATA Spec 2000
- Allows users to track performance with RFID job-monitoring tools

## STANDARD FEATURES

- Print Methods: Thermal transfer and direct thermal printing
- Construction: Metal frame and bi-fold metal media cover with enlarged clear viewing window
- Side-loading supplies path for simplified media and ribbon loading
- Thin film printhead with E<sup>3</sup>™ Element Energy™ Equalizer for superior print quality
- Communications: USB 2.0, high-speed, RS-232 Serial, Gigabit Ethernet, Bluetooth 4.0
- Highly visible color display that turns red when the printer is in an error state allows operators to determine printer status from a distance
- Simplified icon menu navigation system categorizes settings into logical groups of functions

## PRINTER SPECIFICATIONS

|  |   |
|--|---|
| <b>Resolution</b>                      | 203 dpi/8 dots per mm<br>300 dpi/12 dots per mm (optional)<br>600 dpi/24 dots per mm (optional for ZT610 only)  |
| <b>Memory</b>                          | 1 GB RAM memory<br>2 GB on-board linear Flash memory  |
| <b>Maximum Print Width</b>             | ZT610: 4.09"/104 mm<br>ZT620: 6.6"/168 mm   |
| <b>Maximum Print Speed</b>             | ZT610: 14 ips/356 mm per second<br>ZT620: 12 ips/305 mm per second  |
| <b>Media Sensors</b>                   | Dual media sensors: transmissive and reflective   |
| <b>Maximum Continuous Print Length</b> | ZT610<br>• 203 dpi: 150"/3810 mm<br>• 300 dpi: 130"/3302 mm<br>• 600 dpi: 30"/762 mm<br><br>ZT620<br>• 203 dpi: 150"/3810 mm<br>• 300 dpi: 100"/2540 mm |

## MEDIA CHARACTERISTICS

|                                |  |
|--------------------------------|--|
| <b>Media Width</b>             | ZT610<br>• 1.00"/25.4 mm to 4.5"/114 mm tear/cutter<br>• 1.00"/25.4 mm to 4.25"/108 mm peel/rewind<br><br>ZT620<br>• 2.00"/51 mm to 7.0"/178 mm tear/cutter<br>• 2.00"/51 mm to 6.75"/171 mm peel/rewind |
| <b>Maximum Media Roll Size</b> | 8.0"/203 mm O.D. on a 3"/76 mm I.D. core   |
| <b>Thickness</b>               | 0.0023"/0.058 mm to 0.010"/0.25 mm   |
| <b>Media Types</b>             | Continuous, die-cut, notch, black-mark   |

## RIBBON CHARACTERISTICS (Thermal-transfer option only)

|                        |  |
|------------------------|--|
| <b>Standard Length</b> | 1476/450 m   |
| <b>Width</b>           | ZT610: 2.00"/51 mm to 4.33"/110 mm<br>ZT620: 2.00"/51 mm to 6.85"/174 mm |
| <b>Core</b>            | 1.0"/25.4 mm I.D.  |

## OPERATING CHARACTERISTICS

|                      |  |
|----------------------|--|
| <b>Environmental</b> | Operating Temperature:<br>• Thermal transfer = 40°F to 104°F/5°C to 40°C<br>• Direct thermal = 32°F to 104°F/0°C to 40°C<br>Operating Humidity: 20% to 85% non-condensing<br>Storage/Transportation Temperature: -22F to 140F/<br>-30C to 60C<br>Storage Humidity: 20% to 85% non-condensing |
| <b>Electrical</b>    | Auto-detectable (PFC Compliant) 90-265 VAC, 47-63Hz, rated at 250 Watts<br>ENERGY STAR qualified   |

## Agency Approvals

IEC 60950, EN 55022 Class B, EN 55024, EN 61000-3-2, EN 61000-3-3  
cTUVus, CE Marking, FCC-B, ICES-003, VCCI, C-Tick, NOM, S-Mark (Arg), CCC, CU, BSMI, KCC, SABS, IN-Metro

## PHYSICAL CHARACTERISTICS

|               | ZT610 closed     | ZT620 closed     |
|---------------|------------------|------------------|
| <b>Length</b> | 19.88"/505 mm    | 19.88"/505 mm    |
| <b>Width</b>  | 10.56"/268.2 mm  | 13.44"/341.45 mm |
| <b>Height</b> | 15.58"/395.68 mm | 15.58"/395.68 mm |
| <b>Weight</b> | 50 lbs/22.7 kg   | 57.4 lbs/26 kg   |

## SOFTWARE TOOLS

### Link-OS Solutions

**Document Design** – Quickly design a customized print solution using your business data and Zebra's intuitive plug-and-print design tools.

**Device Integration** – Zebra offers apps and products designed to help you integrate Zebra devices into your existing systems.

**Device Management** – Manage your print operations locally and globally with Zebra's suite of device management tools.

**Developer Tools** – Provides you the tools you need to create your own apps, including documentation, source code, programming languages, templates and more.

### Web View

Connect and control Zebra barcode printers using ZPL II via the printer's web interface using common web browsers.

### Alert

Printers equipped with ZebraNet print servers will notify you via an email-enabled, wired or wireless device to minimize downtime.

## FIRMWARE

**ZBI 2.0™** – Optional powerful programming language that lets printers run stand-alone applications, connect to peripherals and much more.

**ZPL and ZPL II®** – Zebra Programming Language provides sophisticated label formatting and printer control, and is compatible with all Zebra printers.

**XML-enabled Printing** – allows XML communications for barcode label printing.

## BARCODE SYMBOLOGIES

Linear Barcodes: Code 11, Code 39, Code 93, Code 128 with subsets A/B/C and UCC Case Codes, ISBT-128, UPC-A, UPC-E, EAN-8, EAN-13, UPC and EAN 2- or 5-digit extensions, Plessey, Postnet, Standard 2-of-5, Industrial 2-of-5, Interleaved 2-of-5, Logmars, MSI, Codabar, Planet Code

2D Barcodes: Codablock, PDF417, Code 49, DataMatrix, MaxiCode, QR Code, TLC 39, MicroPDF, RSS-14 (and composite), Aztec

## FONTS AND GRAPHICS

16 resident expandable ZPL II bitmap and two resident scalable ZPL fonts

Asian and other international scalable and smooth bitmapped fonts

Unicode™: For multi-language printing

Downloadable objects include graphics, scalable and bitmap fonts, label templates and formats

IBM Code Page 850 international character sets are available in the fonts A, B, C, D, E, F, G and O through software control

Code Page 1250, 1252, 1253, 1254, 1255 Support with font O

32 MB user available DRAM

512 MB user available on-board Flash

## OPTIONS AND ACCESSORIES

### Connectivity

- Two open communication slots to add internal cards for 802.11ac, parallel, Ethernet, and applicator interface. IPv6 option is available as an external dongle attached to a parallel port

### Media Handling

- Rewind: Internally rewinds a full roll of printed labels on 3" core, or peels and rewinds liner
- Cutter: Front-mount guillotine cutter and catch tray
- 1" I.D. Core media supply hanger
- Ink-side in ribbon supply spindle

### Keyboard Display Unit

- ZKDU™ keyboard display units for stand-alone printing applications

