



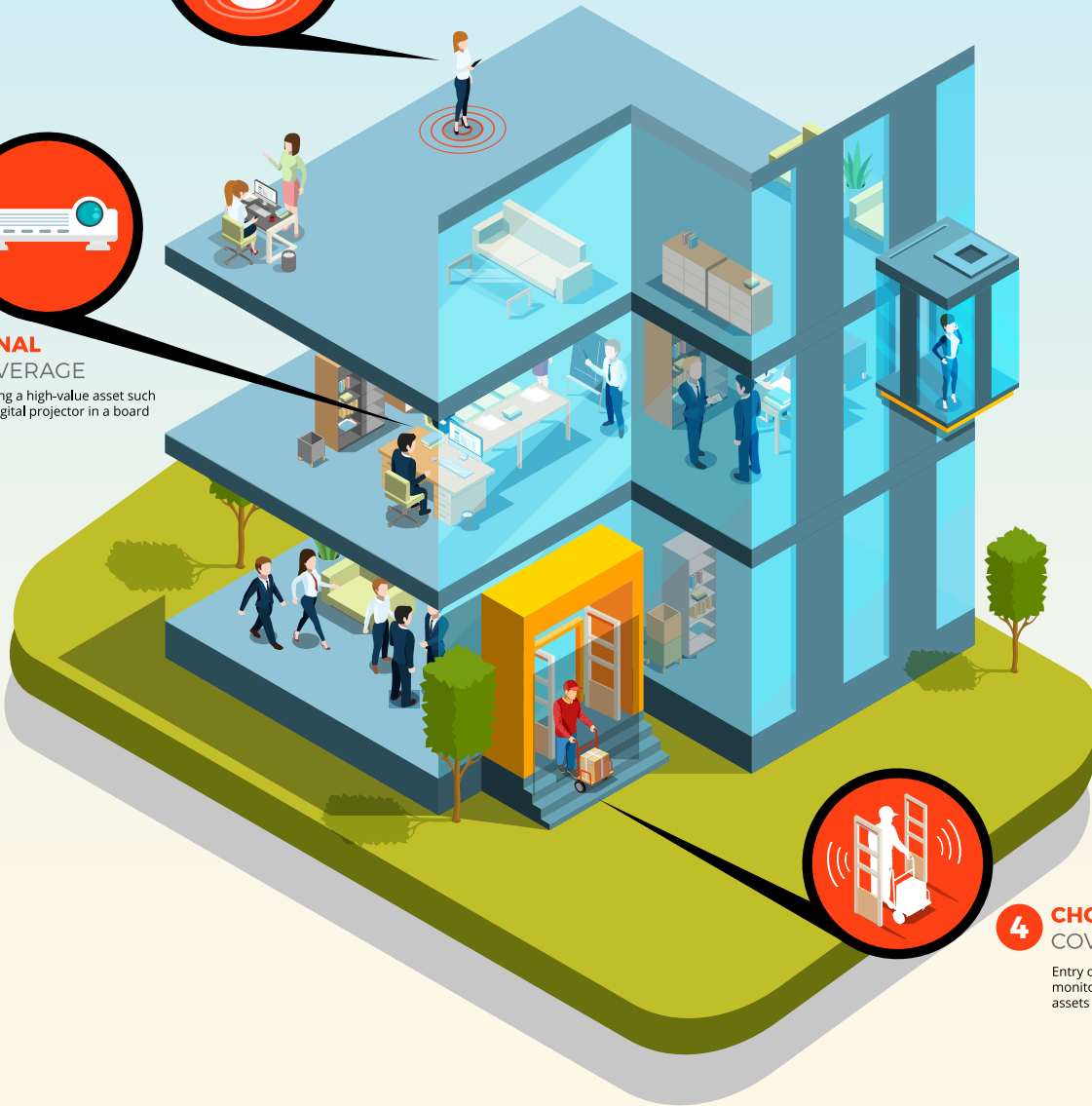
1 **WORLDWIDE**
COVERAGE
Ability to track the location of
assets globally.



2 **LOCAL AREA**
COVERAGE
Locating an IT asset, such as a
laptop or tablet within an office
building.



3 **ZONAL**
COVERAGE
Locating a high-value asset such
as a digital projector in a board
room.



4 **CHOKER POINT**
COVERAGE
Entry or exit points, that help
monitor and control the flow of
assets or people within a building.

REAL TIME LOCATION SYSTEMS (RTLS)

RTLS stands for Real Time Location Systems and refers to any system that accurately determines an item or person's location. RTLS is not a specific type of system or technology, but rather is a goal that can be accomplished with a variety of systems for locating and managing assets. The most common technologies used to create an RTLS are – Bluetooth Low Energy, GNSS (GPS), Infrared Radiation, Passive RFID, Active RFID, Ultrasound Radiation, Ultra-Wideband, Vision, and Wi-Fi.

To read about what coverage options each technology can provide, complete definitions of each coverage and technology, and about increasing granulation, [check out our full RTLS eBook](#).

