

LABELMATE USA

Label Handling Innovations

MC-10A & MC-11 (“MINI-CAT”) REWINDERS

The world's most popular Rewinders!

If your office is still winding up labels by hand, it's time to save time and money with a Rewinder.

These inexpensive MINI-CAT Rewinders are ideal for many day-to-day rewinding jobs and perfect for short to medium runs of labels.

With either MINI-CAT model, you can also rewind coreless (without any Core at all).

The MINI-CATs can also be used for *unwinding* label rolls up to 8.6" in diameter.

These durable, trouble-free Rewinders are designed for continuous 24/7 service!

CORE DIAMETER	LABEL WIDTH	ROLL DIAMETER	DESCRIPTION	MODEL
3"	Up to 4.5" (114-mm)	Up to 8.6" (220-mm)	Fixed 3" Diameter Fin Style Core Holder. Switch selectable direction. Adjustable Torque setting. Also does coreless rewinding.	MC-10A
1" to 4"			Adjustable Core Holder for any Core Diameter from 1" to 4". Switch selectable direction. Adjustable torque setting. Also does coreless rewinding.	MC-11



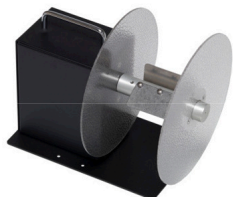
MC-11

Rewind on any core from 1" to 4" diameter, or coreless.



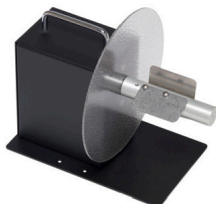
MC-11

With optional APG-MC



MC-10A

w/ optional Outer Flange



MC-10A

You can use the included 3-inch core holder, or rewind "coreless" directly "on-shaft"

	OPTIONS FOR MINI-CAT REWINDERS	PART #
Add desired option line item to your MINI-CAT order.	Adjustable Paper Guide for the MC-11 or MC-10A Rewinder. Guides the outer edge of the label web to ensure an even roll edge.	APG-MC
	Outer Flange for MC-10A only. Can also be field installed on earlier MC-10A Units with Serial Numbers MC10A0042001 and up.	FLANGE-MC-10

SPEED: Up to 15" - ips (38-cm/sec). Switch adjustable rewind force.

No speed adjustments are required.

MAX. LABEL ROLL WEIGHT: 8.5-lbs (3.9 kg)

START/STOP: Convenient ON-OFF switch also controls **Direction**.

POWER REQUIREMENTS: 120v 60Hz. 20 va. UL / CSA Listed Power Supply.
230v 50Hz available at the same price. Specify.

SIZE: H-W-D 9 x 6 x 11" (229 x 152 x 279-mm)

WEIGHT: 13-to15-lbs (5.9- to 6.8-kg)

WARRANTY: 5-Year Parts and Labor Limited Warranty, the best in the industry!
(One-year Limited Warranty on the included Power Supply Module.)



ON-OFF / DIRECTION
Switch



atlasRFIDstore.com

1.888.238.1155 • Inside USA

1.205.383.2244 • Outside USA

info@atlasRFIDstore.com • www.atlasRFIDstore.com