

## How the Parking Access System Works

- The access system uses Radio Frequency Identification (RFID) to detect your tag as you drive up to a parking garage gate.
- A reader mounted at the garage entrance automatically reads the information contained in your tag.
- As you enter this read zone (or antenna field), your tag sends a coded message to the reader, which then passes this message to an in-lane controller for tag validation. Once validated, the parking gate raises, allowing you access.

## AT5402 & AT5406 Access Control Tag Installation Instructions

for Your Parking Access System

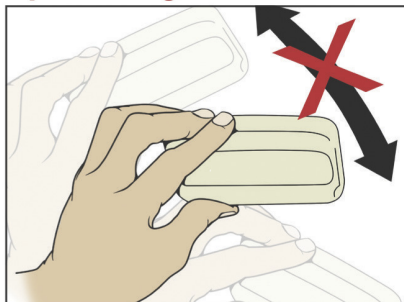


These instructions are for tags that are read by a reader system mounted at the driver's side of vehicle.

*TRANSCORE*

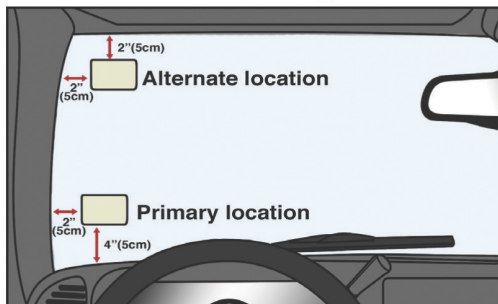
© 2014 TransCore LP. All rights reserved. TRANSCORE is a registered trademark and is used under license. All other trademarks listed are the property of their respective owners. Contents are subject to change.

## Do Not Present The Tag By Holding In Hand



- Tag will NOT work if not mounted on windshield.

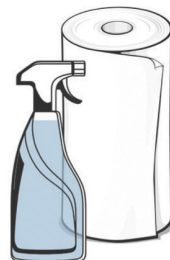
## 1 Choose a Location for Your Tag



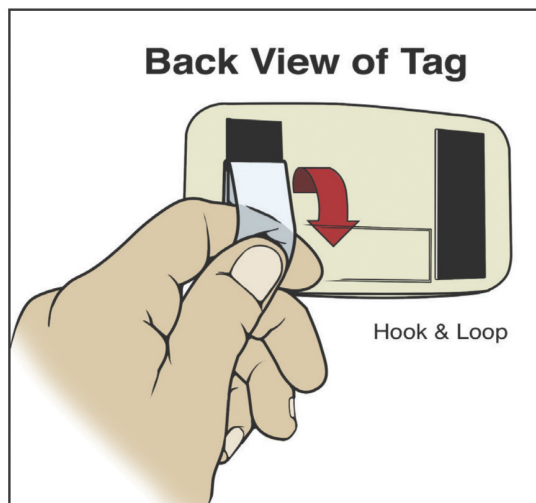
- Place on inside of windshield out of driver's line of sight.
- **Best Location:**  
4 inches from bottom, 2 inches from left
- **Alternate Location:** If you have another tag or inspection sticker, place in upper left corner.

## 2 Prep Your Windshield

- Windshield should be at least 50°F (10°C).
- Use heater/defroster, if necessary.
- Clean and wipe windshield dry before installing tag.



## 3 Peel off Tape



## 4 Press Tag Firmly Against Windshield a Few Seconds in Chosen Location

